

# Product Data Sheet

## Biotin anti-C/EBP $\beta$ (3 isoforms C/EBP $\beta$ , LAP, LIP)

**Catalog # / Size:** 606203 / 25  $\mu$ g  
606204 / 100  $\mu$ g

**Clone:** 1H7

**Isotype:** Mouse IgG2a,  $\kappa$

**Immunogen:** Recombinant LIP

**Reactivity:** Mouse (recognizes all 3 forms), Rat (does not cross-react with human)

**Preparation:** The antibody was purified by affinity chromatography, and conjugated with biotin under optimal conditions. The solution is free of unconjugated biotin.

**Formulation:** This antibody is provided in phosphate-buffered solution, pH 7.2, containing 0.09% sodium azide. Final antibody concentration is 0.5 mg/ml.

**Concentration:** 0.5 mg/ml

**Storage:** The antibody solution should be stored undiluted at 4°C. **Do not freeze.**

## Applications:

**Applications:** WB, IF, ChIP

**Recommended Usage:** Each lot of this antibody is quality control tested by Western blotting. Western blotting, suggested working dilution(s): Use 5  $\mu$ g antibody per 5 ml antibody dilution buffer for each mini-gel. It is recommended that the reagent be titrated for optimal performance for each application.

**Application References:** 1. Su, *et al.* 2003. *J. Biol. Chem.* 278:51150. (ChIP)

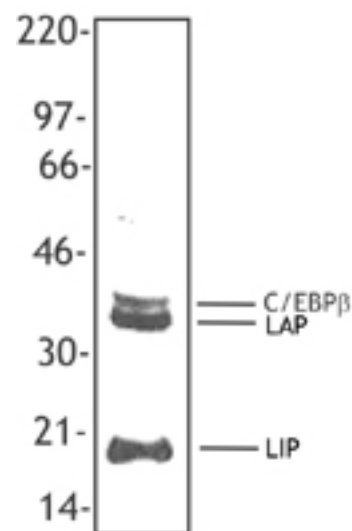
**Description:** C/EBP  $\beta$  (also known as CCAAT/enhancer-binding protein beta, interleukin 6-dependent DNA-binding protein, and nuclear factor of interleukin 6 [NF-IL6]) is a member of the basic leucine zipper C/EBP transcription factor family. C/EBP has three isoforms that include C/EBP $\beta$ , LAP, and LIP (35 kD, 32 kD, and 20 kD, respectively). This protein is localized in the nucleus and functions as a transcription factor in immune, inflammatory, acute-phase, cytokine, collagen type I gene expression. It is upregulated by growth hormones and has been shown to interact with CEBP- $\alpha$ , CEBP- $\delta$ , CEBP- $\gamma$ , CEBP- $\epsilon$ , and CEBP- $\zeta$ . The C/EBP  $\beta$  protein can be modified by phosphorylation and ubiquitination. The 1H7 monoclonal antibody has been reported to be useful for Western blotting, immunoprecipitation, and immunofluorescence of mouse and rat C/EBP  $\beta$ , LIP, and LAP isoforms. The 1H7 antibody does not recognize human C/EBP  $\beta$ , LIP or LAP.

**Antigen References:** 1. Chang C, *et al.* 1990. *Mol. Cell Biol.* 10:6642.  
2. Eaton E, *et al.* 2001. *J. Cell Physiol.* 189:91.  
3. Piwien-Pilipuk G, *et al.* 2002. *J. Biol. Chem.* 277:44557.  
4. Hattori T, *et al.* 2003. *Oncogene.* 22:1273.

**Related Products:** Product  
Biotin Mouse IgG2a,  $\kappa$  Isotype Ctrl  
HRP Streptavidin

**Clone**  
MOPC-173

**Application**  
FC, ICFC  
ELISA, ELISPOT, IHC, WB



*P388D1 (IL-1) cell nuclear extract was resolved by electrophoresis, transferred to nitrocellulose and probed with anti-C/EBP  $\beta$  antibody (Clone 1H7). Proteins were visualized using a goat anti-mouse secondary antibody conjugated to HRP and a chemiluminescence system.*



For research use only. Not for diagnostic use. Not for resale. BioLegend will not be held responsible for patent infringement or other violations that may occur with the use of our products.



\*These products may be covered by one or more Limited Use Label Licenses (see the BioLegend Catalog or our website, [www.biollegend.com/ordering#license](http://www.biollegend.com/ordering#license)). BioLegend products may not be transferred to third parties, resold, modified for resale, or used to manufacture commercial products, reverse engineer functionally similar materials, or to provide a service to third parties without written approval of BioLegend. By use of these products you accept the terms and conditions of all applicable Limited Use Label Licenses. Unless otherwise indicated, these products are for research use only and are not intended for human or animal diagnostic, therapeutic or commercial use.