

## Purified anti-Aurora A (Aurora 2)

**Catalog # / Size:** 603301 / 50 µl (5 Western blots)  
603302 / 200 µl (20 Western blots)

**Clone:** Poly6033

**Isotype:** Rabbit IgG

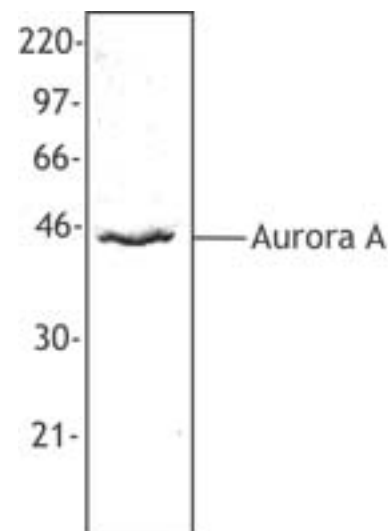
**Immunogen:** Recombinant (partial), N-terminal

**Reactivity:** Mouse, Human

**Preparation:** The antibody was purified by antigen-affinity chromatography.

**Formulation:** This antibody is provided in phosphate-buffered solution, pH 7.2, containing 0.09% sodium azide and 50% glycerol.

**Storage:** Upon receipt, store frozen at -20° C.



*HeLa cell nuclear extract was resolved by electrophoresis, transferred to nitrocellulose, and probed with rabbit anti-Aurora A antibody. Proteins were visualized using a donkey anti-rabbit secondary conjugated to HRP and a chemiluminescence detection system.*

## Applications:

**Applications:** WB - *Quality tested*  
IF - *Reported in the literature*

**Recommended Usage:** Each lot of this antibody is quality control tested by Western blotting. Western blotting, suggested working dilution(s): Use 10 µl per 5 ml antibody dilution buffer for each mini-gel. It is recommended that the reagent be titrated for optimal performance for each application.

**Application References:** 1. Fung TK, *et al.* 2007. *Mol. Biol. Cell* 18:1861.PubMed

**Description:** Aurora A (also known as Aurora 2) is a serine/threonine kinase with a molecular weight of approximately 46 kD. This kinase is highly expressed in the thymus and some tumors and is also expressed in other tissues including the lung, testis, colon, placenta, and fetal liver. Aurora A localizes in the midzone or central spindle in late anaphase and is concentrated in the midbody in telophase and during cytokinesis. This kinase is believed to act in cell cycle regulation during anaphase and/or telophase at centrosome/spindle pole during chromosome segregation. Aurora A has been shown to regulate cleavage of polar spindle microtubules at the onset of cytokinesis during mitosis. Defects in Aurora A cause numerous centrosome aberrations including aneuploidy (genetic variant with amino acid substitution F31I). Aurora A expression is cell cycle regulated, low in G1/S, and accumulating in G2/M. Expression is upregulated in cancer cells during M phase. Phosphorylation by PKA has been shown to regulate function. Aurora A phosphorylation has been reported on Thr 288. This kinase associates with the centrosome and mitotic spindles, NM23-H1, protein phosphatase type I, and co-localizes with  $\gamma$ -tubulin. The Phe 31 variant has been shown to interact with the E2 ubiquitin-conjugating enzyme, UBE2N. The Poly6033 antibody recognizes the N-terminal region of Aurora A. The Poly6033 antibody has been shown to be useful for Western blotting of human and mouse Aurora A protein and for immunoprecipitation of human Aurora A (mouse not tested).

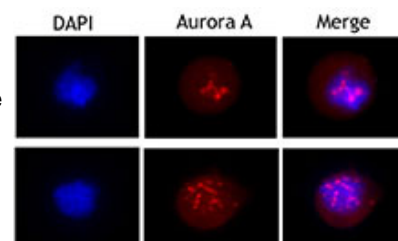
**Antigen References:** 1. Kimura M, *et al.* 1997. *J. Biol. Chem.* 272:13766.  
2. Zhou H, *et al.* 1998. *Nat. Genet.* 20:189.  
3. Tanaka M, *et al.* 2002. *J. Biol. Chem.* 277:10719.

### Related Products:

**Product**  
Purified anti-Aurora A (Aurora 2)-Phosphorylated (Thr288)  
Purified anti-Tubulin-gamma  
HRP Donkey anti-rabbit IgG (minimal x-reactivity)

**Clone**  
Poly6187  
Poly6209  
Poly4064

**Application**  
IF, IHC, WB  
IF, WB  
ELISA, IHC, WB



*Overnight nocodazole treated HeLa cells stained with purified rabbit polyclonal antibody against Aurora A, followed by Rhodamine Red-X conjugated goat anti-rabbit IgG and DAPI.*



For research use only. Not for diagnostic use. Not for resale. BioLegend will not be held responsible for patent infringement or other violations that may occur with the use of our products.



\*These products may be covered by one or more Limited Use Label Licenses (see the BioLegend Catalog or our website, [www.biollegend.com/ordering#license](http://www.biollegend.com/ordering#license)). BioLegend products may not be transferred to third parties, resold, modified for resale, or used to manufacture commercial products, reverse engineer functionally similar materials, or to provide a service to third parties without written approval of BioLegend. By use of these products you accept the terms and conditions of all applicable Limited Use Label Licenses. Unless otherwise indicated, these products are for research use only and are not intended for human or animal diagnostic, therapeutic or commercial use.