

Purified anti-MCM7

Catalog # / Size: 602701 / 50 μ l (5 Western blots)
602702 / 200 μ l (20 Western blots)

Clone: Poly6027

Isotype: Rabbit IgG

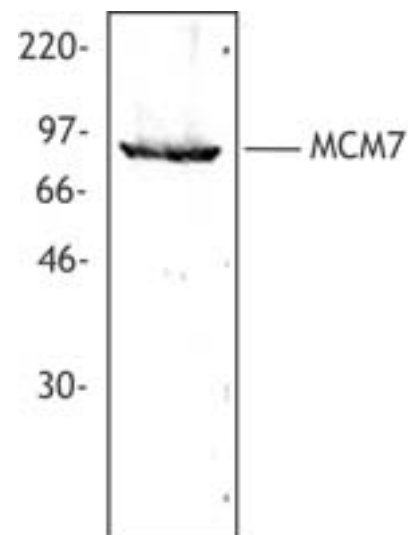
Immunogen: Recombinant, C-terminal

Reactivity: Mouse, Human

Preparation: The antibody was purified by antigen-affinity chromatography.

Formulation: This antibody is provided in phosphate-buffered solution, pH 7.2, containing 0.09% sodium azide and 50% glycerol.

Storage: Upon receipt, store frozen at -20° C.



HeLa cell nuclear extract was resolved by electrophoresis, transferred to nitrocellulose, and probed with rabbit polyclonal antibody against MCM7. Proteins were visualized using a donkey anti-rabbit secondary conjugated to HRP and a chemiluminescence detection system.

Applications:

Applications: WB - *Quality tested*

Recommended Usage: Each lot of this antibody is quality control tested by Western blotting. Western blotting, suggested working dilution(s): Use 10 μ l per 5 ml antibody dilution buffer for each mini-gel. It is recommended that the reagent be titrated for optimal performance for each application.

Application References: 1. Tan B C-M, *et al.* 2006. *EMBO* doi:10.1038/sj.emboj.7601271

Description: The MCM7 protein (DNA replication licensing factor 7) is a member of the MCM family that forms a heterohexamer with other family members. This nuclear protein functions in the initiation of eukaryotic genome replication. MCM7 forms a complex with MCM4, and MCM6 (two subunits of MCM7, two subunits of MCM4 and two subunits of MCM6). This complex regulates the helicase activity of the pre-replication complex and is involved in the formation of replication forks. MCM7 is regulated ubiquitination. In addition to MCM4 and MCM6, this protein has been shown to interact with Cdk4. Two isoforms of MCM7 have been reported with molecular weights of 61 kD and 90 kD. The Poly6027 antibody recognizes the C-terminal region of both human and mouse MCM7 and has been shown to be useful for Western blotting.

Antigen References: 1. Fujita M, *et al.* 1996. *J. Biol. Chem.* 271:4349.
2. Ishimi Y, *et al.* 1997. *J. Biol. Chem.* 272:24508.
3. Ishimi Y, *et al.* 2000. *J. Biol. Chem.* 275:16235.
4. Yabuta N, *et al.* 2003. *Genes Cells* 8:413.

Related Products: Product

Purified anti-MCM2
Purified anti-MCM3
Purified anti-MCM4
Purified anti-MCM5
Purified anti-MCM6
HRP Donkey anti-rabbit IgG (minimal x-reactivity)

Clone

Poly6022
Poly6023
Poly6024
Poly6025
Poly6026
Poly4064

Application

IF, WB
WB
WB, ChIP
WB
WB
ELISA, IHC, WB



For research use only. Not for diagnostic use. Not for resale. BioLegend will not be held responsible for patent infringement or other violations that may occur with the use of our products.



*These products may be covered by one or more Limited Use Label Licenses (see the BioLegend Catalog or our website, www.biolegend.com/ordering#license). BioLegend products may not be transferred to third parties, resold, modified for resale, or used to manufacture commercial products, reverse engineer functionally similar materials, or to provide a service to third parties without written approval of BioLegend. By use of these products you accept the terms and conditions of all applicable Limited Use Label Licenses. Unless otherwise indicated, these products are for research use only and are not intended for human or animal diagnostic, therapeutic or commercial use.