

Purified anti-MCM6

- Catalog # / Size:** 602602 / 200 µl (20 Western blots)
Clone: Poly6026
Isotype: Rabbit IgG
Immunogen: Peptide-KLH (KYLQLAEELIRPERNT)
Reactivity: Mouse, Human
Preparation: The antibody was purified by antigen-affinity chromatography.
Formulation: This antibody is provided in phosphate-buffered solution, pH 7.2, containing 0.09% sodium azide and 50% glycerol.
Storage: Upon receipt, store frozen at -20° C.

Applications:

Applications: WB - *Quality tested*

Recommended Usage: Each lot of this antibody is quality control tested by Western blotting. Western blotting, suggested working dilution(s): Use 10 µl per 5 ml antibody dilution buffer for each mini-gel. It is recommended that the reagent be titrated for optimal performance for each application.

Application References: 1. Tan B C-M, *et al.* 2006. *EMBO* doi:10.1038/sj.emboj.7601271
 2. WuZQ, *et al.* 2008. *Proc Natl Acad Sci USA.* 105:1919.PubMed

Description: The MCM6 protein (minichromosome maintenance protein 6) is a nuclear 115 kD DNA-dependent ATPase. The MCM6 protein is a component of the DNA pre-replication complex that acts to allow DNA to undergo single round of replication per cell cycle. MCM6 together with MCM4 and MCM7 have DNA helicase activity. MCM6 has been reported to interact with the MCM4 and MCM7 (to form a 600 kD complex with helicase activity). The Poly6026 antibody recognizes both human and mouse MCM6 and has been shown to be useful for Western blotting.

Antigen References: 1. Hu B, *et al.* 1993. *Nucleic Acids Res.* 21:5289.
 2. Ishimi Y. 1997. *J. Biol. Chem.* 272:24508.

Related Products: Product

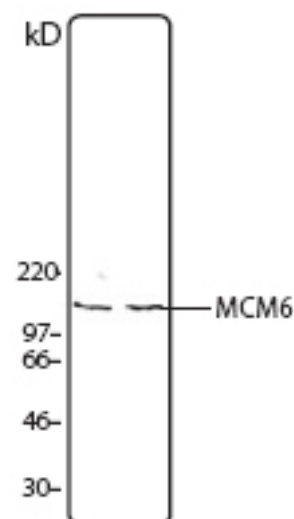
Purified anti-MCM2
 Purified anti-MCM3
 Purified anti-MCM4
 Purified anti-MCM5
 Purified anti-MCM7
 HRP Donkey anti-rabbit IgG (minimal x-reactivity)

Clone

Poly6022
 Poly6023
 Poly6024
 Poly6025
 Poly6027
 Poly4064

Application

IF, WB
 WB
 WB, ChIP
 WB
 WB
 ELISA, IHC, WB



Hela (left lane) and NIH-3T3 (right lane) cell lysate was resolved by electrophoresis, transferred to nitrocellulose and probed with rabbit anti-MCM6 antibody. Proteins were visualized using a donkey anti-rabbit secondary antibody conjugated to HRP and a chemiluminescence system.



For research use only. Not for diagnostic use. Not for resale. BioLegend will not be held responsible for patent infringement or other violations that may occur with the use of our products.



*These products may be covered by one or more Limited Use Label Licenses (see the BioLegend Catalog or our website, www.biolegend.com/ordering#license). BioLegend products may not be transferred to third parties, resold, modified for resale, or used to manufacture commercial products, reverse engineer functionally similar materials, or to provide a service to third parties without written approval of BioLegend. By use of these products you accept the terms and conditions of all applicable Limited Use Label Licenses. Unless otherwise indicated, these products are for research use only and are not intended for human or animal diagnostic, therapeutic or commercial use.