

Product Data Sheet

Purified anti-MCM4

Catalog # / Size: 602402 / 200 µl (20 Western blots)
Clone: Poly6024
Isotype: Rabbit IgG
Immunogen: Peptide
Reactivity: Human
Preparation: The antibody was purified by antigen-affinity chromatography.
Formulation: This antibody is provided in phosphate-buffered solution, pH 7.2, containing 0.09% sodium azide and 50% glycerol.
Storage: Upon receipt, store frozen at -20° C.

Applications:

Applications: WB
 ChIP - Reported in the literature

Recommended Usage: Each lot of this antibody is quality control tested by Western blotting. Western blotting, suggested working dilution(s): Use 10 µl per 5 ml antibody dilution buffer for each mini-gel. It is recommended that the reagent be titrated for optimal performance for each application.

Application References: 1. Tan B C-M, *et al.* 2006. *EMBO* doi:10.1038/sj.emboj.7601271

Description: The MCM4 protein (minichromosome maintenance protein 4) is a nuclear 100 kD DNA-dependent ATPase. The MCM4 protein is a component of the DNA pre-replication complex that acts to allow DNA to undergo single round of replication per cell cycle. MCM4 together with MCM6 and MCM7 have DNA helicase activity. MCM4 can be modified by phosphorylation by CDK2. Phosphorylation of MCM4 inhibits DNA replication. MCM4 has been reported to interact with the MCM6 and MCM7 (to form a 600 kD complex with helicase activity) and CDK2. The Poly6024 antibody recognizes human MCM4 and has been shown to be useful for Western blotting.

Antigen References: 1. Hu B, *et al.* 1993. *Nucleic Acids Res.* 21:5289.
 2. Ishimi Y. 1997. *J. Biol. Chem.* 272:24508.
 3. Ishimi Y, *et al.* 2003. *J. Biol. Chem.* 278:24644.

Related Products:

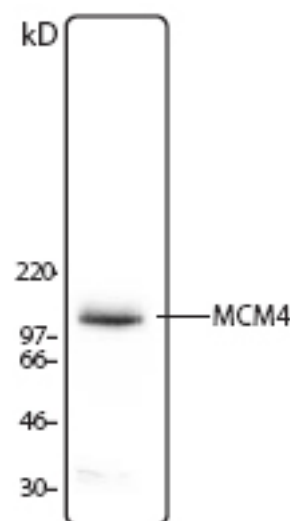
Product
 Purified anti-MCM2
 Purified anti-MCM3
 Purified anti-MCM5
 Purified anti-MCM6
 Purified anti-MCM7
 HRP Donkey anti-rabbit IgG (minimal x-reactivity)

Clone

Poly6022
 Poly6023
 Poly6025
 Poly6026
 Poly6027
 Poly4064

Application

IF, WB
 WB
 WB
 WB
 WB
 ELISA, IHC, WB



Hela cell nuclear extract was resolved by electrophoresis, transferred to nitrocellulose and probed with rabbit anti-MCM4 antibody. Proteins were visualized using a donkey anti-rabbit secondary antibody conjugated to HRP and a chemiluminescence system.



For research use only. Not for diagnostic use. Not for resale. BioLegend will not be held responsible for patent infringement or other violations that may occur with the use of our products.



*These products may be covered by one or more Limited Use Label Licenses (see the BioLegend Catalog or our website, www.biollegend.com/ordering#license). BioLegend products may not be transferred to third parties, resold, modified for resale, or used to manufacture commercial products, reverse engineer functionally similar materials, or to provide a service to third parties without written approval of BioLegend. By use of these products you accept the terms and conditions of all applicable Limited Use Label Licenses. Unless otherwise indicated, these products are for research use only and are not intended for human or animal diagnostic, therapeutic or commercial use.