

## Purified anti-MCM3

**Catalog # / Size:** 602302 / 200 µl (20 Western blots)

**Clone:** Poly6023

**Isotype:** Rabbit IgG

**Immunogen:** Peptide

**Reactivity:** Mouse, Human

**Preparation:** The antibody was purified by antigen-affinity chromatography.

**Formulation:** This antibody is provided in phosphate-buffered solution, pH 7.2, containing 0.09% sodium azide and 50% glycerol.

**Storage:** Upon receipt, store frozen at -20° C.

## Applications:

**Applications:** WB

**Recommended Usage:** Each lot of this antibody is quality control tested by Western blotting. Western blotting, suggested working dilution(s): Use 10 µl per 5 ml antibody dilution buffer for each mini-gel. It is recommended that the reagent be titrated for optimal performance for each application.

**Application References:**

1. Tan B C-M, *et al.* 2006. *EMBO* doi:10.1038/sj.emboj.7601271.
2. Yim H, *et al.* 2009. *Mol Cell Biol.* 29:2609. PubMed

**Description:** The MCM3 protein (minichromosome maintenance protein 3) is a 110 kD DNA-dependent ATPase containing a nuclear localization sequence. The MCM3 protein is a component of the DNA pre-replication complex that acts to allow DNA to undergo single round of replication per cell cycle. MCM3 is constitutively expressed and can be modified by acetylation. Acetylation of MCM3 inhibits the initiation of DNA replication. MCM3 has been reported to interact with the MCM5 (CDC46) and MCM3AP proteins. The Poly6023 antibody recognizes both human and mouse MCM3 and has been shown to be useful for Western blotting.

**Antigen References:**

1. Hu B, *et al.* 1993. *Nucleic Acids Res.* 21:5289.
2. Ishimi Y. 1997. *J. Biol. Chem.* 272:24508.
3. Ishimi Y, *et al.* 2003. *J. Biol. Chem.* 278:24644.

### Related Products: Product

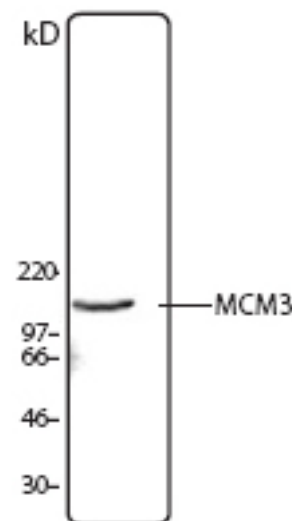
Purified anti-MCM2	Purified anti-MCM4	Purified anti-MCM5	Purified anti-MCM6	Purified anti-MCM7	HRP Donkey anti-rabbit IgG (minimal x-reactivity)
--------------------	--------------------	--------------------	--------------------	--------------------	---

### Clone

Poly6022	Poly6024	Poly6025	Poly6026	Poly6027	Poly4064
----------	----------	----------	----------	----------	----------

### Application

IF, WB	WB, ChIP	WB	WB	WB	ELISA, IHC, WB
--------	----------	----	----	----	----------------



*HeLa cell nuclear extract was resolved by electrophoresis, transferred to nitrocellulose and probed with rabbit anti-MCM3 antibody. Proteins were visualized using a donkey anti-rabbit secondary antibody conjugated to HRP and a chemiluminescence system.*



For research use only. Not for diagnostic use. Not for resale. BioLegend will not be held responsible for patent infringement or other violations that may occur with the use of our products.



\*These products may be covered by one or more Limited Use Label Licenses (see the BioLegend Catalog or our website, [www.biolegend.com/ordering#license](http://www.biolegend.com/ordering#license)). BioLegend products may not be transferred to third parties, resold, modified for resale, or used to manufacture commercial products, reverse engineer functionally similar materials, or to provide a service to third parties without written approval of BioLegend. By use of these products you accept the terms and conditions of all applicable Limited Use Label Licenses. Unless otherwise indicated, these products are for research use only and are not intended for human or animal diagnostic, therapeutic or commercial use.