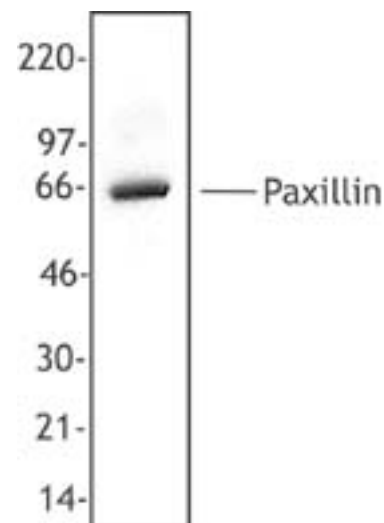


Purified anti-Paxillin

- Catalog # / Size:** 600701 / 50 µl (5 Western blots)
Clone: Poly6007
Isotype: Rabbit IgG
Immunogen: Full length recombinant protein (human)
Reactivity: Mouse, Rat, Human
Preparation: The antibody was purified by antigen-affinity chromatography.
Formulation: This antibody is provided in phosphate-buffered solution, pH 7.2, containing 0.09% sodium azide and 50% glycerol.
Storage: Upon receipt, store frozen at -20° C.



MOLT-4 cell extract was resolved by electrophoresis, transferred to nitrocellulose, and probed with rabbit anti-paxillin antibody. Proteins were visualized using a donkey anti-rabbit secondary conjugated to HRP and a chemiluminescence detection system.

Applications:

Applications: WB, IF

Recommended Usage: Each lot of this antibody is quality control tested by Western blotting. Western blotting, suggested working dilution(s): Use 10 µl per 5 ml antibody dilution buffer for each mini-gel. For immunofluorescence microscopy: Use a starting dilution of 1:100~1:400. It is recommended that the reagent be titrated for optimal performance for each application.

Application References:

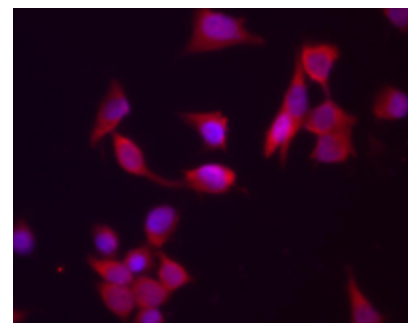
1. Yao H, *et al.* 2006. *Oncogene* 25:2285. (WB IF) PubMed
2. D'Onofrio MF, *et al.* 2007. *J. Biol. Chem.* doi:10.1074/jbc.M701861200.
3. Proszynski TJ, *et al.* 2009. *Proc Natl Acad Sci USA.* 106:18373. PubMed

Description: Paxillin (also known as peroxisomal membrane protein 3) is a cytoplasmic protein with LIM metal-binding repeat homology and LIM domains. There are three isoforms of this protein designated as α , β , γ , approximate molecular weight 68 kD. Paxillin is localized to actin-membrane attachment at sites of cell adhesion to extracellular matrix (focal adhesion). This protein undergoes cell adhesion-dependent tyrosine phosphorylation. Paxillin has been shown to interact with FAK, vinculin, src, Crk, p210BRC / ABL, talin, and integrin- β_1 . The Poly6007 antibody recognizes human, mouse, and rat paxillin and has shown to be useful for Western blotting.

Antigen References:

1. Leventhal P, *et al.* 1997. *J. Biol. Chem.* 272:5214.
2. Mazaki Y, *et al.* 1997. *J. Biol. Chem.* 272:7437.
3. Kirchner J, *et al.* 2003. *J. Cell Sci.* 116:975.
4. Tang D, *et al.* 2003. *J. Physiol.* 42:858.

Related Products:Product	Clone	Application
Purified anti-Integrin β_1	Poly6004	WB
Purified anti-Paxillin-Phosphorylated (Tyr31)	Poly6008	WB
Purified anti-Paxillin-Phosphorylated (Tyr118)	Poly6009	WB
Purified anti-FAK	Poly6038	WB, IF
Purified anti-FAK-Phosphorylated (Tyr216)	Poly6039	WB
Purified anti-FAK-Phosphorylated (Tyr425)	Poly6040	WB
Purified anti-Paxillin	PAX227	WB, IP, IF, IHC
HRP Donkey anti-rabbit IgG (minimal x-reactivity)	Poly4064	ELISA, IHC, WB



Immunofluorescent microscope analysis of HeLa cells using anti-Paxillin polyclonal antibody (red). Nuclei were stain with DAPI (blue).



For research use only. Not for diagnostic use. Not for resale. BioLegend will not be held responsible for patent infringement or other violations that may occur with the use of our products.



*These products may be covered by one or more Limited Use Label Licenses (see the BioLegend Catalog or our website, www.biolegend.com/ordering#license). BioLegend products may not be transferred to third parties, resold, modified for resale, or used to manufacture commercial products, reverse engineer functionally similar materials, or to provide a service to third parties without written approval of BioLegend. By use of these products you accept the terms and conditions of all applicable Limited Use Label Licenses. Unless otherwise indicated, these products are for research use only and are not intended for human or animal diagnostic, therapeutic or commercial use.