

## Purified anti-EGFR

**Catalog # / Size:** 621301 / 50  $\mu$ l (5 Western blots)  
621302 / 200  $\mu$ l (20 Western blots)

**Clone:** Poly6213

**Isotype:** Rabbit IgG

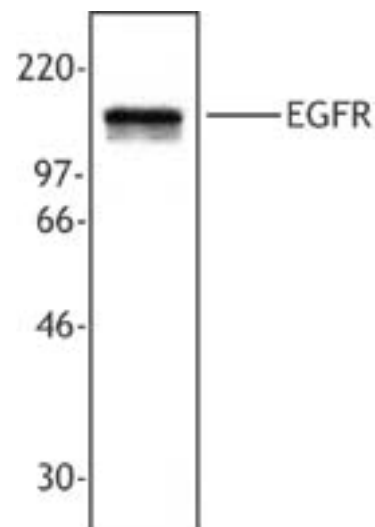
**Immunogen:** peptide-KLH, C terminal

**Reactivity:** Mouse, Rat, Human

**Preparation:** The antibody was purified by antigen-affinity chromatography.

**Formulation:** This antibody is provided in phosphate-buffered solution, pH 7.2, containing 0.09% sodium azide and 0.1% gelatin, 50% glycerol.

**Storage:** Upon receipt, store undiluted at -20° C.



A431 cell extract was resolved by electrophoresis, transferred to nitrocellulose, and probed with rabbit anti-EGFR antibody. Proteins were visualized using a donkey anti-rabbit secondary conjugated to HRP and a chemiluminescence detection system.

## Applications:

**Applications:** WB, IF

**Recommended Usage:** Each lot of this antibody is quality control tested by Western blotting. Western blotting, suggested working dilution(s): Use 10  $\mu$ l per 5 ml antibody dilution buffer for each mini-gel. For immunofluorescence microscopy: Use a dilution range of 1:100–1:400. It is recommended that the reagent be titrated for optimal performance for each application.

**Description:** The EGFR is a ubiquitously expressed 180 kD membrane tyrosine kinase that dimerizes upon binding EGF, transforming growth factor alpha, or other ligands. Dimerization initiates downstream signaling that elicits extensive phosphorylation of the receptor resulting in mitogenesis and protection against apoptotic stimuli. EGF receptor expression is amplified in many squamous carcinomas and in the bronchi of high-risk smokers. The receptor is internalized and degraded after ligand binding. EGFR extensively interacts with a number of proteins and is also reported to be a cellular receptor for cytomegalovirus. The Poly6213 antibody recognizes the human, mouse, and rat EGFR and has been shown to be useful for Western blotting.

**Antigen References:**

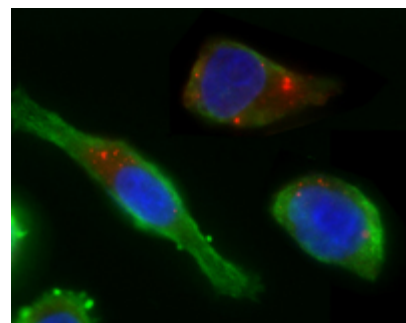
1. Carpenter G. 1984. *Cell* 37:357.
2. Ullrich A, *et al.* 1984. *Nature* 309:418.
3. Reynolds FH, Jr, *et al.* 1981. *Nature* 292:259.
4. Sibilio M, *et al.* 2000. *Cell* 102:211.

**Related Products:**

**Product**  
HRP Donkey anti-rabbit IgG (minimal x-reactivity)

**Clone**  
Poly4064

**Application**  
ELISA, IHC,  
WB



Immunofluorescent microscope analysis of HeLa cells using anti-EGFR polyclonal antibody (poly6213) (red).  $\alpha$ -tubulin (clone 10D8) has been labeled with green and nuclei were stain with DAPI (blue).



For research use only. Not for diagnostic use. Not for resale. BioLegend will not be held responsible for patent infringement or other violations that may occur with the use of our products.



\*These products may be covered by one or more Limited Use Label Licenses (see the BioLegend Catalog or our website, [www.biolegend.com/ordering#license](http://www.biolegend.com/ordering#license)). BioLegend products may not be transferred to third parties, resold, modified for resale, or used to manufacture commercial products, reverse engineer functionally similar materials, or to provide a service to third parties without written approval of BioLegend. By use of these products you accept the terms and conditions of all applicable Limited Use Label Licenses. Unless otherwise indicated, these products are for research use only and are not intended for human or animal diagnostic, therapeutic or commercial use.