

Purified anti-Tubulin-gamma

Catalog #/ 620901 / 50 μ l (5 Western blots)

Size: 620902 / 200 μ l (20 Western blots)

Clone: Poly6209

Isotype: Rabbit IgG

Immunogen: Peptide-KLH

Reactivity: Human, Mouse

Preparation: The antibody was purified by antigen-affinity chromatography.

Formulation: This antibody is provided in phosphate-buffered solution, pH 7.2, containing 0.09% sodium azide and 50% glycerol.

Storage: Upon receipt, store frozen at -20° C.

Applications

Applications: WB, IF

Application References: 1. Fry, A. M., *et al.*, 1998. *EMBO J.* 17:470.

Recommended Usage: Each lot of this antibody is quality control tested by Western blotting. Western blotting, suggested working dilution(s): Use 1:1000-1:10,000 dilutions. For immunofluorescence microscopy: Use a starting dilution of 1:100. It is recommended that the reagent be titrated for optimal performance for each application.

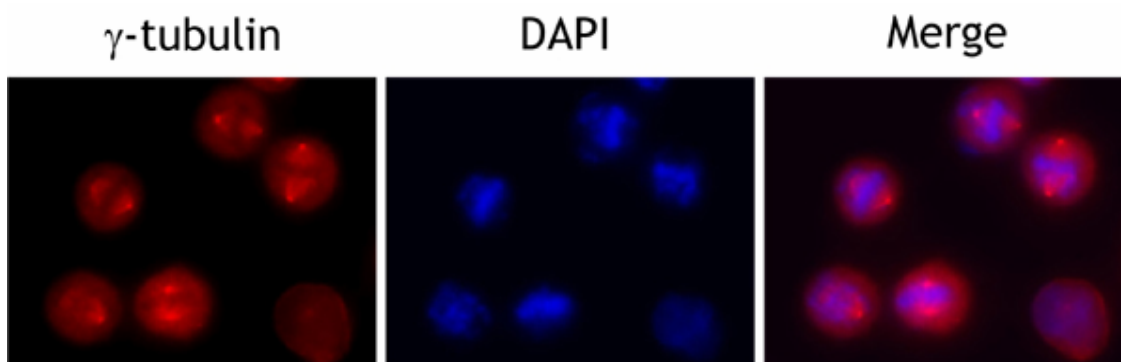


Figure 1. Overnight nocodazole treated HeLa cells stained with purified rabbit polyclonal antibody against γ -tubulin, followed by Rhodamine Red-X conjugated goat anti-rabbit IgG and DAPI.

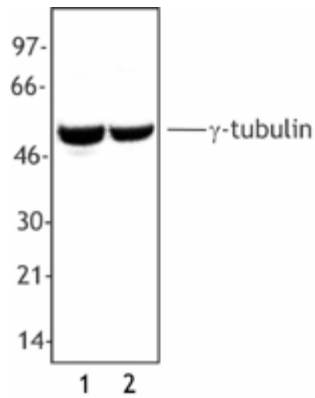


Figure 2. Whole cell extract from A431 cells (Lane 1) and NIH3T3 cells (Lane 2) were resolved by electrophoresis, transferred to nitrocellulose and probed with rabbit anti- γ -tubulin antibody. Proteins were visualized using a donkey anti-rabbit secondary conjugated to HRP and a chemiluminescence detection system.

Antigen Information

Other Names: γ -tubulin

Structure: Tubulin superfamily, highly conserved between yeast and mammals. Predicted molecular weight approximately 51 kD

Distribution: Cytoskeletal protein, high expressed in centrosomes

Function: Cytoskeletal organization, mitosis

Regulation: Expressed at highest levels during prophase to metaphase

Modification: Phosphorylation

Interaction: Interacts with α -tubulin, paxillin, RAC GTPase activated protein 1

Description: γ -tubulin is a 51 kD member of the tubulin superfamily and is conserved between yeast and mammals. This cytoskeletal protein is highly expressed in centrosomes and is thought to be involved in cytoskeletal organization and mitosis. γ -tubulin is expressed at highest levels during prophase to metaphase and can be modified by phosphorylation. This protein has been shown to interact with α -tubulin, paxillin, and RAC GTPase activated protein 1. The Poly6209 antibody has been shown to be useful for Western blotting of human and mouse γ -tubulin.

Antigen References:

1. Zheng, Y., *et al.*, 1991. *Cell* 65:817.