

Product Data Sheet

Purified anti-CRP (C-reactive protein)

Catalog # / Size: 620802 / 200 µl (20 Western blots)

Clone: Poly6208

Isotype: Rabbit IgG

Immunogen: Recombinant (partial)

Reactivity: Human

Preparation: The antibody was purified by antigen-affinity chromatography.

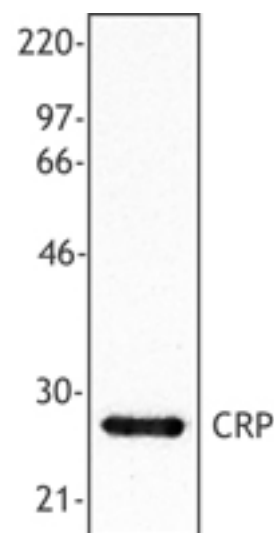
Formulation: This antibody is provided in phosphate-buffered solution, pH 7.2, containing 0.09% sodium azide and 50% glycerol.

Storage: Upon receipt, store frozen at -20° C.

Applications:

Applications: WB - *Quality tested*

Recommended Usage: Each lot of this antibody is quality control tested by Western blotting. Western blotting, suggested working dilution(s): Use 10 µl per 5 ml antibody dilution buffer for each mini-gel. It is recommended that the reagent be titrated for optimal performance for each application.



Recombinant human C-reactive protein (20 ng per lane) was resolved by electrophoresis, transferred to nitrocellulose, and probed with rabbit polyclonal antibody against CRP. Proteins were visualized using a donkey anti-rabbit secondary conjugated to HRP and a chemiluminescence detection system.

Description: CRP (C-reactive protein) is a member of the pentaxin family. CRP exists as a homopentamer in a discoid arrangement (noncovalently attached). Individual subunits are approximately 24 kD, the molecular weight of the entire molecule is approximately 120 kD. CRP is secreted and can be found in plasma. This protein promotes agglutination, phagocytosis, and complement fixation through Ca²⁺-dependent binding to phosphorylcholine. CRP is thought to scavenge nuclear material released from damaged circulating cells. CRP is the major protein involved in acute phase response to pathogens; both CRP and degradation products of CRP act as anti-inflammatory agents. CRP has been shown to interact with both DNA and histones. The Poly6208 antibody recognizes human CRP and has been shown to be useful for Western blotting.

Antigen References:

1. Whitehead AS, *et al.* 1983. *Science* 221:69.
2. Tucci A, *et al.* 1983. *J. Immunol.* 131:2416.
3. Szalai AJ. 2002. *Vascul. Pharmacol.* 39:105 (review).
4. Chang MK, *et al.* 2002. *P. Natl. Acad. Sci. USA* 99:13043.

Related Products: **Product**

HRP Donkey anti-rabbit IgG (minimal x-reactivity)

Clone

Poly4064

Application

ELISA, IHC, WB



For research use only. Not for diagnostic use. Not for resale. BioLegend will not be held responsible for patent infringement or other violations that may occur with the use of our products.



*These products may be covered by one or more Limited Use Label Licenses (see the BioLegend Catalog or our website, www.biollegend.com/ordering#license). BioLegend products may not be transferred to third parties, resold, modified for resale, or used to manufacture commercial products, reverse engineer functionally similar materials, or to provide a service to third parties without written approval of BioLegend. By use of these products you accept the terms and conditions of all applicable Limited Use Label Licenses. Unless otherwise indicated, these products are for research use only and are not intended for human or animal diagnostic, therapeutic or commercial use.