

Product Data Sheet

Purified anti-ch-TOG

Catalog # / Size: 620401 / 50 µl (5 Western blots)
 620402 / 200 µl (20 Western blots)

Clone: Poly6204

Isotype: Rabbit IgG

Immunogen: Partial recombinant protein, containing approximately 200 amino acids from the C-terminus

Reactivity: Human

Preparation: The antibody was purified by antigen-affinity chromatography.

Formulation: This antibody is provided in phosphate-buffered solution, pH 7.2, containing 0.09% sodium azide and 50% glycerol.

Storage: Upon receipt, store frozen at -20° C.

Applications:

Applications: WB - *Quality tested*

Recommended Usage: Each lot of this antibody is quality control tested by Western blotting. Western blotting, suggested working dilution(s): Use 10 µl per 5 ml antibody dilution buffer for each mini-gel. It is recommended that the reagent be titrated for optimal performance for each application.

Application Notes: This antibody is not suitable for immunoprecipitation.

Application References: 1. Appierto V, *et al.* 2009. *Mol Cancer Res.* 8:3360. PubMed
 2. Foraker AB, *et al.* 2012. *J Cell Biol.* PubMed.

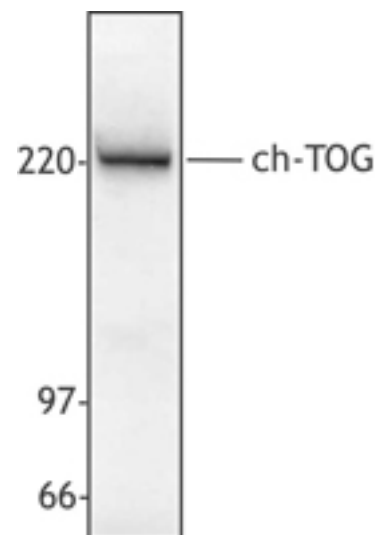
Description: ch-TOG (also known as colonic and hepatic tumor over-expressed protein) is a 218 kD member of the TOG/XMAP215 family containing heat repeats. This protein is localized in the perinuclear cytoplasm during interphase and at the spindle poles and centrosomes during mitosis. Ch-TOG is believed to function in spindle microtubule organization and has been shown to interact with TACC1, TACC3, and tubulin. The Poly6204 antibody has been shown to be useful for Western blotting of the human ch-TOG protein.

Antigen References: 1. Charrasse S, *et al.* 1995. *Eur. J. Biochem.* 234:406.
 2. Garcia M, *et al.* 2001. *EMBO J.* 20:3389.
 3. Lauffart B, *et al.* 2002. *Biochem. J.* 363:195.
 4. Gergely F, *et al.* 2003. *Genes Dev.* 17:336.

Related Products: **Product**
 Purified anti-TACC3
 HRP Donkey anti-rabbit IgG (minimal x-reactivity)

Clone
 Poly6188
 Poly4064

Application
 WB, IF
 ELISA, IHC, WB



HepG2 cell extract was resolved by electrophoresis, transferred to nitrocellulose and probed with rabbit polyclonal antibody against ch-TOG. Proteins were visualized using a donkey anti-rabbit secondary conjugated to HRP and a chemiluminescence detection system.



For research use only. Not for diagnostic use. Not for resale. BioLegend will not be held responsible for patent infringement or other violations that may occur with the use of our products.



*These products may be covered by one or more Limited Use Label Licenses (see the BioLegend Catalog or our website, www.biollegend.com/ordering#license). BioLegend products may not be transferred to third parties, resold, modified for resale, or used to manufacture commercial products, reverse engineer functionally similar materials, or to provide a service to third parties without written approval of BioLegend. By use of these products you accept the terms and conditions of all applicable Limited Use Label Licenses. Unless otherwise indicated, these products are for research use only and are not intended for human or animal diagnostic, therapeutic or commercial use.