

Product Data Sheet

Purified anti-Stathmin/Op18 Phosphorylated (Ser16)

Catalog # / Size: 620201 / 50 μ l (5 Western blots)
620202 / 200 μ l (20 Western blots)

Clone: Poly6202

Isotype: Rabbit IgG

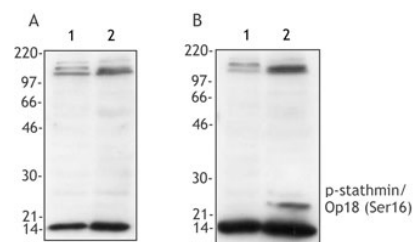
Immunogen: Modified peptide

Reactivity: Human, reacts against Ser16-phosphorylated Stathmin/Op18

Preparation: The antibody was purified by antigen-affinity chromatography.

Formulation: This antibody is provided in phosphate-buffered solution, pH 7.2, containing 0.09% sodium azide and 50% glycerol.

Storage: Upon receipt, store frozen at -20° C.



Hela cells were treated with 300 μ M mimosine for 16 hrs, then placed in complete media (lane 1) or media containing 200 ng/ml nocodazole (lane 2) for an additional 18 hrs and cell extract prepared, resolved by electrophoresis, and transferred to nitrocellulose. Nitrocellulose blots were treated overnight with 100 U/ml calf intestinal phosphatase (CIP) (panel A), or not treated with CIP (panel B), and probed with anti-phosphorylated Stathmin/Op18 (Ser16), Poly6202.

Applications:

Applications: WB - Quality tested

Recommended Usage: Each lot of this antibody is quality control tested by Western blotting. Western blotting, suggested working dilution(s): Use 10 μ l per 5 ml antibody dilution buffer for each mini-gel. It is recommended that the reagent be titrated for optimal performance for each application.

Description: Stathmin/Op18 is a 21 - 23 kD member of the Stathmin family. This protein is localized in the cytoplasm and becomes nuclear during the S/G2 phase of the cell cycle. Stathmin/Op18 acts as a microtubule destabilizer in mitotic spindle regulation and sequesters tubulin dimers into assembly-incompetent complexes. This protein participates as an intracellular relay integrating regulatory signals of the cellular environment and has been shown to be involved in megakaryocyte polyploidization. Stathmin/Op18 can be phosphorylated in response to heat; Ser62 phosphorylation reduces tubulin binding ability. This protein can also be modified by acetylation. Stathmin/Op18 has been shown to interact with tubulin, KIST, CaM kinase II and IV, Cdc2, MAPK, and Cdk1. The Poly6202 antibody recognizes human phosphorylated stathmin/Op18 (Ser16) and has been shown to be useful for Western blotting.

- Antigen References:**
1. Sobel A, *et al.* 1989. *J. Biol. Chem.* 264:3765.
 2. Labdon J, *et al.* 1992. *J. Biol. Chem.* 267:3506.
 3. Rubin C, *et al.* 2003. *Exp. Hematol.* 31:389.
 4. Honnappa S, *et al.* 2003. *J. Biol. Chem.* 278:38926.

Related Products: **Product**
Purified anti-CaMKII-Phosphorylated (Thr286)
HRP Donkey anti-rabbit IgG (minimal x-reactivity)

Clone
Poly6182
Poly4064

Application
IF, WB
ELISA, IHC, WB



For research use only. Not for diagnostic use. Not for resale. BioLegend will not be held responsible for patent infringement or other violations that may occur with the use of our products.



*These products may be covered by one or more Limited Use Label Licenses (see the BioLegend Catalog or our website, www.biolegend.com/ordering#license). BioLegend products may not be transferred to third parties, resold, modified for resale, or used to manufacture commercial products, reverse engineer functionally similar materials, or to provide a service to third parties without written approval of BioLegend. By use of these products you accept the terms and conditions of all applicable Limited Use Label Licenses. Unless otherwise indicated, these products are for research use only and are not intended for human or animal diagnostic, therapeutic or commercial use.