

# Product Data Sheet

## Purified anti-Artemis

**Catalog # / Size:** 619801 / 50 µl (5 Western blots)  
 619802 / 200 µl (20 Western blots)

**Clone:** Poly6198

**Isotype:** Rabbit IgG

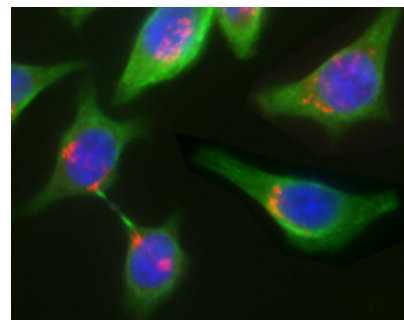
**Immunogen:** Peptide-KLH (KGLRAPTLKRRLE)

**Reactivity:** Human

**Preparation:** The antibody was purified by antigen-affinity chromatography.

**Formulation:** This antibody is provided in phosphate-buffered solution, pH 7.2, containing 0.09% sodium azide and 50% glycerol.

**Storage:** Upon receipt, store frozen at -20° C.



Immunofluorescent microscope analysis of HeLa cells using anti-Artemis polyclonal antibody (poly6198) (red).  $\alpha$ -tubulin (clone 10D8) has been labeled with green and nuclei were stain with DAPI (blue).

## Applications:

**Applications:** WB, IF

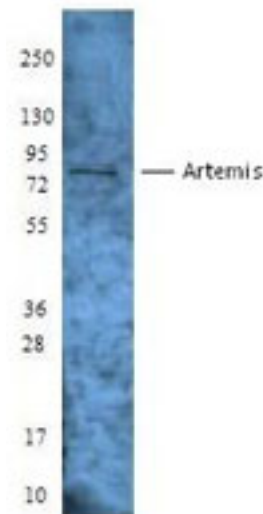
**Recommended Usage:** Each lot of this antibody is quality control tested by Western blotting. Western blotting, suggested working dilution(s): Use 10 µl per 5 ml antibody dilution buffer for each mini-gel. For immunofluorescence microscopy: Use a dilution range of 1:100–1:400. It is recommended that the reagent be titrated for optimal performance for each application.

**Description:** Artemis is a widely expressed 78 kD protein involved in non-homologous end joining. This protein has been reported to be involved in DNA double-strand break repair and the processing of hairpin coding ends during VDJ recombination. Artemis has endonuclease and exonuclease activity and has been shown to be mutated in human severe combined immune deficiency disorder (T-B- radiosensitive SCID). Artemis is phosphorylated by DNA-PKcs; phosphorylation regulates intrinsic endonuclease and exonuclease activity. Artemis has been shown to form a complex with DNA-PKcs. The Poly6198 antibody has been shown to be useful for Western blotting of the human Artemis protein.

**Antigen References:**

1. Moshous D, *et al.* 2001. *Cell* 105:77
2. Ma Y, *et al.* 2002. *Cell* 108:781.
3. Bassing CH, *et al.* 2002. *Cell* 109:S45 (review).
4. Rooney S, *et al.* 2003. *J. Exp. Med.* 197:553.

Related Products:	Product	Clone	Application
	Purified anti-DNA-PKcs Phosphorylated (Thr2609)	10B1	IF, WB
	Purified anti-DNA-PKcs	7A4	IF, WB
	Purified anti-DNA-PKcs Phosphorylated (Thr2609)	7G4	IHC, WB
	Purified anti-DNA-PKcs	Poly6126	WB
	HRP Donkey anti-rabbit IgG (minimal x-reactivity)	Poly4064	ELISA, IHC, WB



MOLT-4 cell nuclear extracts were resolved by electrophoresis, transferred to nitrocellulose, and probed with anti-Artemis antibody (clone Poly6198). Proteins were visualized using a donkey anti-rabbit-IgG secondary conjugated to HRP and chemiluminescence detection.



For research use only. Not for diagnostic use. Not for resale. BioLegend will not be held responsible for patent infringement or other violations that may occur with the use of our products.



\*These products may be covered by one or more Limited Use Label Licenses (see the BioLegend Catalog or our website, [www.biollegend.com/ordering#license](http://www.biollegend.com/ordering#license)). BioLegend products may not be transferred to third parties, resold, modified for resale, or used to manufacture commercial products, reverse engineer functionally similar materials, or to provide a service to third parties without written approval of BioLegend. By use of these products you accept the terms and conditions of all applicable Limited Use Label Licenses. Unless otherwise indicated, these products are for research use only and are not intended for human or animal diagnostic, therapeutic or commercial use.