

Product Data Sheet

Purified anti- α -Adducin

Catalog # / Size: 617001 / 50 μ l (5 Western blots)
617002 / 200 μ l (20 Western blots)

Clone: Poly6170

Isotype: Rabbit IgG

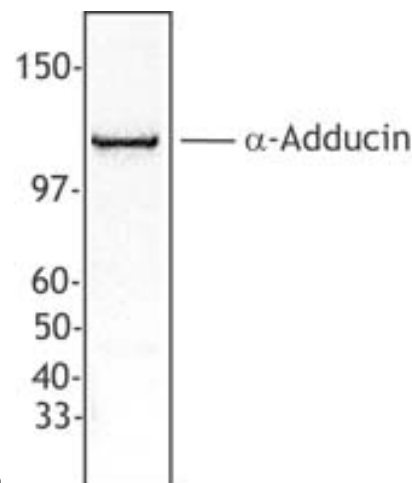
Immunogen: Recombinant (partial)

Reactivity: Mouse, Human

Preparation: The antibody was purified by antigen-affinity chromatography.

Formulation: This antibody is provided in phosphate-buffered solution, pH 7.2, containing 0.09% sodium azide and 50% glycerol.

Storage: Upon receipt, store frozen at -20° C.



HepG2 cell extract was resolved by electrophoresis, transferred to nitrocellulose, and probed with rabbit anti- α -adducin antibody. Proteins were visualized using a donkey anti-rabbit secondary conjugated to HRP and a chemiluminescence detection system.

Applications:

Applications: WB - *Quality tested*

Recommended Usage: Each lot of this antibody is quality control tested by Western blotting. Western blotting, suggested working dilution(s): Use 10 μ l per 5 ml antibody dilution buffer for each mini-gel. It is recommended that the reagent be titrated for optimal performance for each application.

Application References: 1 Kalfa TA, *et al.* 2006. *Blood* 108:3637.PubMed

Description: The α -adducin protein is a ubiquitously expressed cytoskeletal protein that binds with high affinity to Ca^{2+} /calmodulin and acts as a substrate for protein kinases A and C. α -adducin is a 80-120 kD member of the aldolase class II family and adducin subfamily. This protein has three isoforms that interact as heterodimers α/β , and α/γ . The molecular weights for the various isoforms are α =120 kD; β =110kD; γ =80kD. This protein has been reported to promote the assembly of the spectrin-actin network. Polymorphisms in α -adducin are associated with cardiovascular disease and hypertension. α -adducin has been reported to interact with calmodulin. When phosphorylated by Rho-kinase, α -adducin can regulate membrane ruffling and cell motility. The Poly6170 antibody has been shown to be useful for Western blotting of mouse and human α -adducin protein.

Antigen References: 1. Fukata Y, *et al.* 1999. *J. Cell Biol.* 145:347.
2. Joshi R, *et al.* 1991. *J. Cell. Biol.* 115:665.
3. Lin B, *et al.* 1995. *Genomics* 25:93.

Related Products: **Product**
HRP Donkey anti-rabbit IgG (minimal x-reactivity)

Clone
Poly4064

Application
ELISA, IHC, WB



For research use only. Not for diagnostic use. Not for resale. BioLegend will not be held responsible for patent infringement or other violations that may occur with the use of our products.



*These products may be covered by one or more Limited Use Label Licenses (see the BioLegend Catalog or our website, www.biollegend.com/ordering#license). BioLegend products may not be transferred to third parties, resold, modified for resale, or used to manufacture commercial products, reverse engineer functionally similar materials, or to provide a service to third parties without written approval of BioLegend. By use of these products you accept the terms and conditions of all applicable Limited Use Label Licenses. Unless otherwise indicated, these products are for research use only and are not intended for human or animal diagnostic, therapeutic or commercial use.