

Product Data Sheet

FITC anti-NF- κ B p50

Catalog # / Size: 616705 / 25 μ g
616706 / 100 μ g

Clone: 4D1

Isotype: Mouse IgG1, κ

Immunogen: recombinant full-length human NF- κ B p50

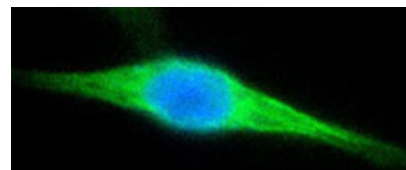
Reactivity: Human

Preparation: The antibody was purified by affinity chromatography, and conjugated with FITC under optimal conditions. The solution is free of unconjugated FITC.

Formulation: This antibody is provided in phosphate-buffered solution, pH 7.2, containing 0.09% sodium azide. Final antibody concentration is 0.5 mg/ml.

Concentration: 0.5 mg/ml

Storage: The antibody solution should be stored undiluted at 4°C and protected from prolonged exposure to light. **Do not freeze.**



HeLa cell was stained by FITC-conjugated anti-NF- κ B p50 antibody (clone 4D1). The nucleus is stained by DAPI.

Applications:

Applications: IF

Recommended Usage: For immunofluorescent staining applications, a concentration range of 1-4 μ g/ml is recommended. It is recommended that the reagent be titrated for optimal performance for each application.

Application References: 1. Huang F, *et al.* 2007. *J. Immunol.* 179:6504. PubMed
2. Cao YA, *et al.* 2008. *J. Biol. Chem.* 283:15309. PubMed

Description: NF- κ B/p50 (nuclear factor kappa light chain enhancer in B cells p50, NF- κ B1) is a member of the Rel/dorsal family. This ubiquitously expressed nuclear protein is one subunit of the NF-kappa B complex consisting of a 65 kD transactivating subunit and a 50 kD DNA binding subunit. Both subunits are derived from larger precursor proteins. NF- κ B acts as a transcriptional activator and was originally identified as an activator of kappa light chain in B cells. NF- κ B/p50 is bound (with p65) to I κ B inhibitor in cytoplasm in inactive form. Phosphorylation of I κ B releases and NF- κ B which goes to the nucleus to activate gene expression. NF- κ B can be activated with LPS, TNF- α , phorbol ester, or IL-1. The 4D1 monoclonal antibody reacts with human NF- κ B p50 and has been shown to be useful for Western blotting.

Antigen References: 1. Baldwin AS, *et al.* 1996. *Annu. Rev. Immunol.* 14:649 (review).
2. Chen F, *et al.* 1999. *Clin. Chem.* 45:7 (review).

Related Products: **Product**
FITC Mouse IgG1, κ Isotype Ctrl

Clone
MOPC-21

Application
FC, ICFC



For research use only. Not for diagnostic use. Not for resale. BioLegend will not be held responsible for patent infringement or other violations that may occur with the use of our products.



*These products may be covered by one or more Limited Use Label Licenses (see the BioLegend Catalog or our website, www.biollegend.com/ordering#license). BioLegend products may not be transferred to third parties, resold, modified for resale, or used to manufacture commercial products, reverse engineer functionally similar materials, or to provide a service to third parties without written approval of BioLegend. By use of these products you accept the terms and conditions of all applicable Limited Use Label Licenses. Unless otherwise indicated, these products are for research use only and are not intended for human or animal diagnostic, therapeutic or commercial use.