

# Product Data Sheet

## Purified anti-Mcl-1

**Catalog # / Size:** 613601 / 50 µl (5 Western blots)  
613602 / 200 µl (20 Western blots)

**Clone:** Poly6136

**Isotype:** Rabbit IgG

**Immunogen:** Recombinant (partial)

**Reactivity:** Mouse, Human

**Preparation:** The antibody was purified by antigen-affinity chromatography.

**Formulation:** This antibody is provided in phosphate-buffered solution, pH 7.2, containing 0.09% sodium azide and 50% glycerol.

**Storage:** Upon receipt, store frozen at -20° C.

## Applications:

**Applications:** WB - *Quality tested*

**Recommended Usage:** Each lot of this antibody is quality control tested by Western blotting. Western blotting, suggested working dilution(s): Use 10 µl per 5 ml antibody dilution buffer for each mini-gel. It is recommended that the reagent be titrated for optimal performance for each application.

**Application References:**

1. Zhao Y, et al. 2007. *Mol Cell Biol*. 27:4328. PubMed
2. Perperzak V, et al. 2010. *J. Immunol.* 185:6670. PubMed
3. Hu L, et al. 2011. *J. Virol.* PubMed
4. Colloff JL, et al. 2011. *J. Biol Chem*, 18:286. PubMed
5. Baumgartner CK, et al. *J. Immunol.* 189:2309. PubMed.

**Description:** Mcl-1 (myeloid cell leukemia-1) is a 37 kD Bcl-2 related protein found in mitochondrial and non-mitochondrial membranes that dimerizes with Bax. Mcl-1 has been shown to act as a survival factor for hematopoietic cells and contribute to the STAT-dependent protection of neutrophils against apoptosis. Mcl-1 is increased by PMA, GM-CSF, M-CSF, IL-1β, IL-3, and IL-6 in hematopoietic cells. This protein is decreased following growth factor withdrawal. Mcl-1 is modified by JNK phosphorylation. The Poly6136 antibody has been shown to recognize mouse Mcl-1 and has been shown to be useful for Western blotting.

**Antigen References:**

1. Kozopas K, et al. 1993. *P. Natl. Acad. Sci. USA* 90:3516.
2. Zhou P, et al. 1997. *Blood* 89:630.
3. Chao J, et al. 1998. *Mol. Cell. Biol.* 18:4883.
4. Epling-Burnette P, et al. 2001. *J. Immunol.* 166:7486.
5. Moulding D, et al. 1998. *Blood* 92:2495.
6. Inoshita S, et al. 2002. *J. Biol. Chem.* 277:43740.

### Related Products:

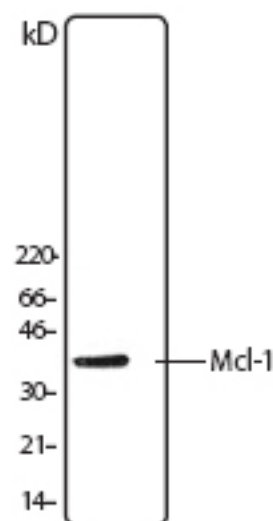
Purified anti-Cytochrome c  
Purified anti-Mcl-1  
Purified anti-PARP  
Purified anti-Cytochrome c  
Purified anti-Cytochrome c  
HRP Donkey anti-rabbit IgG (minimal x-reactivity)

### Clone

2.7D5  
22  
5A5  
6H2.B4  
7H8.2C12  
Poly4064

### Application

FC  
IP, WB  
IF, WB  
IP, ICFC, IF, ICC  
WB  
ELISA, IHC, WB



A20 cell lysate was resolved by electrophoresis, transferred to nitrocellulose and probed with rabbit anti-Mcl-1 polyclonal antibody. Proteins were visualized using donkey anti-rabbit secondary antibody conjugated to HRP and a chemiluminescence detection system.



For research use only. Not for diagnostic use. Not for resale. BioLegend will not be held responsible for patent infringement or other violations that may occur with the use of our products.



\*These products may be covered by one or more Limited Use Label Licenses (see the BioLegend Catalog or our website, [www.biollegend.com/ordering#license](http://www.biollegend.com/ordering#license)). BioLegend products may not be transferred to third parties, resold, modified for resale, or used to manufacture commercial products, reverse engineer functionally similar materials, or to provide a service to third parties without written approval of BioLegend. By use of these products you accept the terms and conditions of all applicable Limited Use Label Licenses. Unless otherwise indicated, these products are for research use only and are not intended for human or animal diagnostic, therapeutic or commercial use.