

## Purified anti-Elongin C

**Catalog # / Size:** 613101 / 50 µl (5 Western blots)  
613102 / 200 µl (20 Western blots)

**Clone:** Poly6131

**Isotype:** Rabbit IgG

**Immunogen:** Recombinant full-length

**Reactivity:** Mouse, Human

**Preparation:** The antibody was purified by affinity chromatography.

**Formulation:** This antibody is provided in phosphate-buffered solution, pH 7.2, containing 0.09% sodium azide and 50% glycerol.

**Storage:** Upon receipt, store frozen at -20° C.

## Applications:

**Applications:** WB - *Quality tested*

**Recommended Usage:** Each lot of this antibody is quality control tested by Western blotting. Western blotting, suggested working dilution(s): Use 10 µl per 5 ml antibody dilution buffer for each mini-gel. It is recommended that the reagent be titrated for optimal performance for each application.

**Application References:**

1. Maine GN, *et al.* 2007. *EMBO* 26:436. PubMed
2. Mao X, *et al.* 2009. *Genes Dev.* 23:849. PubMed
3. Mao, X., *et al.* 2011. *J. Biol Chem.* 16:32355. PubMed.

**Description:** Elongin C (also known as RNA polymerase II transcription factor SIII p15 subunit and transcription elongation factor B polypeptide 1) is a 12.5 kD member of the SKP1 family. Elongin functions as a regulatory subunit of a general transcription elongation factor that increases RNA polymerase II transcription elongation past template-encoded arresting sites in the nucleus. The Elongin BC complex acts as adaptor to link Elongin A, VHL, WSB1 or SOCS1 with a module of CUL2 or CUL5 and RBX1 to form E3 ubiquitin ligases. The Poly6131 antibody recognizes the human and mouse elongin C protein and has been shown to be useful for Western blotting.

**Antigen References:**

1. Garrett K, *et al.* 1994. *P. Natl. Acad. Sci. USA* 91:5237.
2. Stebbins C, *et al.* 1999. *Science.* 284:455.
3. Brower C, *et al.* 2002. *P. Natl. Acad. Sci. USA* 99:10353.
4. Haan S, *et al.* 2003. *J. Biol. Chem.* 278:31972.

### Related Products:

**Product**  
Purified anti-Elongin B

Purified anti-SOCS6

HRP Donkey anti-rabbit IgG (minimal x-reactivity)

### Clone

Poly6130

Poly6155

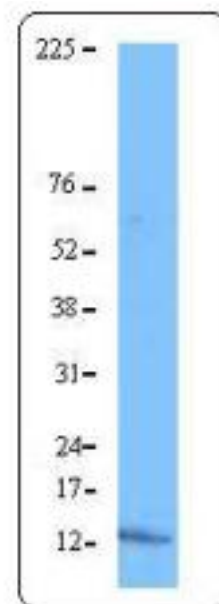
Poly4064

### Application

WB, IP

WB

ELISA, IHC, WB



*Hela cell nuclear extract was resolved by electrophoresis, transferred to nitrocellulose, and probed with rabbit anti-Elongin C antibody. Proteins were visualized using a donkey anti-rabbit secondary conjugated to HRP and a chemiluminescence detection system.*



For research use only. Not for diagnostic use. Not for resale. BioLegend will not be held responsible for patent infringement or other violations that may occur with the use of our products.



\*These products may be covered by one or more Limited Use Label Licenses (see the BioLegend Catalog or our website, [www.biolegend.com/ordering#license](http://www.biolegend.com/ordering#license)). BioLegend products may not be transferred to third parties, resold, modified for resale, or used to manufacture commercial products, reverse engineer functionally similar materials, or to provide a service to third parties without written approval of BioLegend. By use of these products you accept the terms and conditions of all applicable Limited Use Label Licenses. Unless otherwise indicated, these products are for research use only and are not intended for human or animal diagnostic, therapeutic or commercial use.