

## Purified anti-Bcl-2

- Catalog # / Size:** 611901 / 50  $\mu$ l (5 Western blots)  
611902 / 200  $\mu$ l (20 Western blots)
- Clone:** Poly6119
- Isotype:** Rabbit IgG
- Immunogen:** Peptide-KLH, N-terminal
- Reactivity:** Human, Mouse, Rat
- Preparation:** The antibody was purified by antigen-affinity chromatography.
- Formulation:** This antibody is provided in phosphate-buffered solution, pH 7.2, containing 0.09% sodium azide.
- Storage:** Upon receipt, store at 4°C.

## Applications:

**Applications:** WB, IF

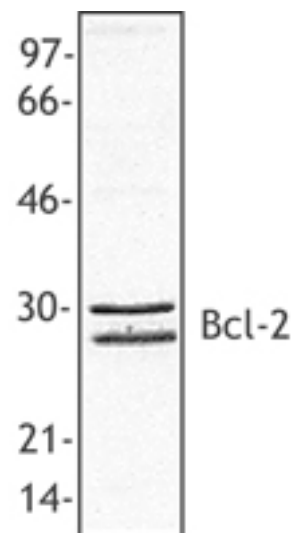
**Recommended Usage:** Each lot of this antibody is quality control tested by Western blotting. Western blotting, suggested working dilution(s): Use 10  $\mu$ l per 5 ml antibody dilution buffer for each mini-gel. For immunofluorescence microscopy: Use a dilution range of 1:100–1:400. It is recommended that the reagent be titrated for optimal performance for each application.

**Application References:** 1. Kim BE, *et al.* 2004. *Exp Mol Med.* 36:444.

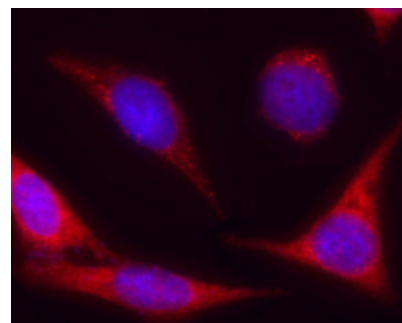
**Description:** Bcl-2 (B-cell leukemia 2) is an apoptotic protein and a member of the Bcl-2 family containing BH1-4 domains. Two reported isoforms exist  $\alpha$ =25 kD;  $\beta$ =22 kD. The Bcl-2 protein forms homo- or hetero-dimers with other Bcl-2 family members. Bcl-2 is distributed in the outer mitochondrial membrane, intracellular membrane nuclear envelope, and endoplasmic reticulum. This protein blocks apoptotic death by controlling mitochondrial membrane permeability. Cleavage of Bcl-2 can convert to pro-apoptotic (by cleavage of BH4 domain). Bcl-2 has been reported to regulate cell cycle progression via ROS. This protein is modified by ASK1/JNK1, PKC, ERKs, and stress-activated kinase phosphorylation and can be ubiquitinated. Bcl-2 has been shown to interact with Apaf-1, Raf-1, TP53BP2, caspase-3, and form heterodimers with Bax, Bad, Bak, Bcl-x<sub>L</sub>, and Bag-1. Bcl-2 is modified by phosphorylation and ubiquitination. The Poly6119 antibody has been shown to be useful for Western blotting of the human, mouse, and rat Bcl-2 protein.

**Antigen References:** 1. Tsujimoto Y, *et al.* 1986 *P. Natl. Acad. Sci. USA* 83:5214.  
2. Yang E, *et al.* 1995. *Cell* 80:285.  
3. Huang Z, *et al.* 2000. *Oncogene* 19:6627.  
4. Deng X, *et al.* 2003. *Blood.* 102:3179.

Related Products:	Product	Clone	Application
	Biotin anti-Caspase-3	4-1-18	WB
	Purified anti-Caspase-3	4-1-18	WB
	Purified anti-BAD	Poly6117	WB
	HRP Donkey anti-rabbit IgG (minimal x-reactivity)	Poly4064	ELISA, IHC, WB



*HeLa cell extract was resolved by electrophoresis, transferred to nitrocellulose, and probed with rabbit anti-Bcl-2 antibody. Proteins were visualized using a donkey anti-rabbit secondary conjugated to HRP and a chemiluminescence detection system. This antibody recognizes both the  $\alpha$  and  $\beta$  Bcl-2 isoforms.*



*Immunofluorescent microscope analysis of HeLa cells using anti-Bcl-2 polyclonal antibody, followed by Rhodamine Red-X conjugated goat anti-rabbit IgG and DAPI.*



For research use only. Not for diagnostic use. Not for resale. BioLegend will not be held responsible for patent infringement or other violations that may occur with the use of our products.



\*These products may be covered by one or more Limited Use Label Licenses (see the BioLegend Catalog or our website, [www.biolegend.com/ordering#license](http://www.biolegend.com/ordering#license)). BioLegend products may not be transferred to third parties, resold, modified for resale, or used to manufacture commercial products, reverse engineer functionally similar materials, or to provide a service to third parties without written approval of BioLegend. By use of these products you accept the terms and conditions of all applicable Limited Use Label Licenses. Unless otherwise indicated, these products are for research use only and are not intended for human or animal diagnostic, therapeutic or commercial use.