

Purified anti-APC3

Catalog #/ 610901 / 50 μ l (5 Western blots)

Size: 610902 / 200 μ l (20 Western blots)

Clone: Poly6109

Isotype: Rabbit IgG

Immunogen: Recombinant (partial), N-terminal

Reactivity: Human

Preparation: The antibody was purified by antigen-affinity chromatography.

Formulation: This antibody is provided in phosphate-buffered solution, pH 7.2, containing 0.09% sodium azide and 50% glycerol.

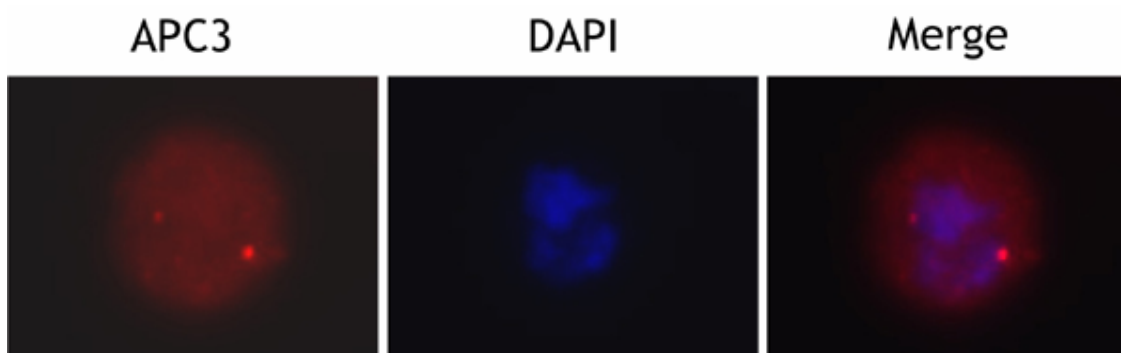
Storage: Upon receipt, store frozen at -20° C.

Applications

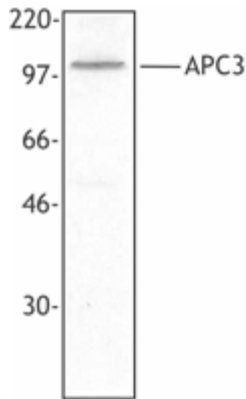
Applications: WB, IF

Recommended Each lot of this antibody is quality control tested by Western blotting. Western blotting,

Usage: suggested working dilution(s): Use 10 μ l per 5 ml antibody dilution buffer for each mini-gel. It is recommended that the reagent be titrated for optimal performance for each application.



Overnight nocodazole treated Hela cells stained with purified rabbit polyclonal antibody against APC3, followed by Rhodamine Red-X conjugated goat anti-rabbit IgG and DAPI.



Jurkat cell extract was resolved by electrophoresis, transferred to nitrocellulose and probed with rabbit polyclonal antibody against APC3. Proteins were visualized using a donkey anti-rabbit secondary conjugated to HRP and a chemiluminescence detection system.

Antigen Information

Other Names: Anaphase-promoting complex subunit 3, Cell division cycle protein 27 (Cdc27), Nuc2

Structure: E3 enzyme family, TPR repeats; 95 kD

Distribution: Spindle poles, spindle microtubules, kinetochores, chromosome arms

Function: Required for core stability, multisubunit cell cycle ubiquitin ligase. Regulates sister chromatid separation by degrading securins. Involved in ubiquitin-dependent cyclin catabolism, metaphase/anaphase transition, spindle elongation

Regulation: Complex inactivated by protein kinase A (PKA) pathway. Activated by CDC20, Cdh1

Modifications: Phosphorylation by cdk1-cyclin B

Interactions: RB, Mad2, p55CDC, BUBR1, anaphase promoting complex composed of eight protein subunits APC1-8, APC9-11, Cdc26, Mnd2, and Swm1

Description: APC3 (anaphase-promoting complex subunit 3) is a member of the E3 enzyme family. This protein contains TPR repeats and has a molecular weight of approximately 95 kD. The APC3 protein is located at the spindle poles, the spindle microtubules, kinetochores and chromosome arms. This protein is required for core stability and functions as a multisubunit cell cycle ubiquitin ligase, and a regulator of sister chromatid separation by degrading securins. In addition, this protein functions in ubiquitin-dependent cyclin catabolism, metaphase/anaphase transition, and spindle elongation. The APC3 protein comprises one subunit of the anaphase promoting complex including APC1-8, and other probable complex proteins APC9-11, Cdc26, Mnd2, Swm1. The APC complex is inactivated by protein kinase A and is activated by CDC20 and Cdh1. The APC3 protein interacts with Rb, Mad2, p55CDC, BUBR1, as well as the APC complex proteins noted above. The APC3 protein can be modified by phosphorylation by cdk1-cyclin B. The Poly6109 antibody has been shown to be useful for Western blotting of the human APC3 protein.

Antigen References:

1. Chen, P., *et al.*, 1995. *Cell Growth Differ.* 6:199.
2. King, R., *et al.*, 1995. *Cell* 81:279.
3. Rudner, A., *et al.*, 2000. *J. Cell Biol.* 149:1377.
4. Topper, L., *et al.*, 2002. *Cell Cycle.* 1:282.