

Purified anti-GAPDH

Catalog # / Size: 631401 / 125 µl (5 Western blots)
631402 / 500 µl (20 Western blots)

Clone: Poly6314

Isotype: Rabbit IgG

Immunogen: Peptide-KLH (C-terminal)

Reactivity: Human, Mouse, Rat, Rabbit

Preparation: The antibody was purified by antigen-affinity chromatography.

Formulation: This antibody is provided in phosphate-buffered solution, pH 7.2, containing 0.09% sodium azide, 0.1% gelatin.

Storage: Upon receipt, store at 4°C

Applications:

Applications: WB

Recommended Usage: Each lot of this antibody is quality control tested by Western blotting. Western blotting, suggested working dilution(s): Use 25 µl antibody per 5 ml antibody dilution buffer for each mini-gel. It is recommended that the reagent be titrated for optimal performance for each application.

Application References: 1. Tian T, *et al.* 2008. *Am J Physiol Cell Physiol.* 1152:325. PubMed

Description: This rabbit polyclonal antibody recognizes human, mouse, rat, and rabbit GAPDH also known as glyceraldehyde-3-phosphate dehydrogenase. GAPDH is well known for its glycolytic function of converting D-glyceraldehyde-3-phosphate to 1,3-bisphosphoglycerate. GAPDH is a ubiquitously expressed and has a molecular mass of 37 kD. Though differentially expressed from tissue to tissue, GAPDH is frequently used as a loading control for assays involving mRNA and protein detection. In more recent studies GAPDH has been shown to be involved in microtubule bundling, prostate cancer progression, programmed neuronal cell death, DNA replication, and DNA repair. The poly6314 antibody has been shown to be useful for Western blotting.

Antigen References: 1. Ercolani L, *et al.* 1988. *J. Biol. Chem.* 263:15335.
2. Meyer-Siegler K, *et al.* 1991. *Proc. Natl. Acad. Sci. U.S.A.* 88:8460.
3. Bae BI, *et al.* 2006. *Proc. Natl. Acad. Sci. U.S.A.* 103:3405.

Related Products: **Product**

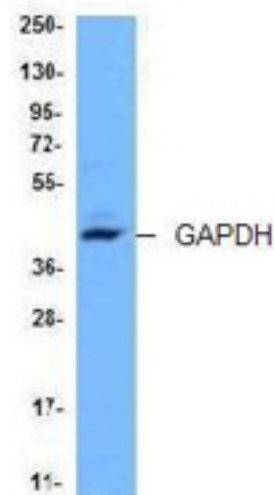
HRP Donkey anti-rabbit IgG (minimal x-reactivity)

Clone

Poly4064

Application

ELISA, IHC, WB



Hela whole cell extract was resolved by electrophoresis, transferred to nitrocellulose and probed with polyclonal anti-GAPDH antibody (Poly6314). Proteins were visualized using donkey anti-rabbit secondary antibody conjugated to HRP and a chemiluminescence system.



For research use only. Not for diagnostic use. Not for resale. BioLegend will not be held responsible for patent infringement or other violations that may occur with the use of our products.



*These products may be covered by one or more Limited Use Label Licenses (see the BioLegend Catalog or our website, www.biolegend.com/ordering#license). BioLegend products may not be transferred to third parties, resold, modified for resale, or used to manufacture commercial products, reverse engineer functionally similar materials, or to provide a service to third parties without written approval of BioLegend. By use of these products you accept the terms and conditions of all applicable Limited Use Label Licenses. Unless otherwise indicated, these products are for research use only and are not intended for human or animal diagnostic, therapeutic or commercial use.