

Product Data Sheet

Purified anti-SOX2 (NH2 terminus)

Catalog # / Size: 630801 / 50 µl
630802 / 200 µl

Clone: Poly6308

Isotype: Rabbit IgG

Immunogen: Peptide-KLH (N-terminal)

Reactivity: Human

Preparation: The antibody was purified by antigen-affinity chromatography.

Formulation: This antibody is provided in phosphate-buffered solution, pH 7.2, containing 0.09% sodium azide and 50% glycerol.

Storage: Upon receipt, store frozen at -20° C.

Applications:

Applications: WB, IF

Recommended Usage: Each lot of this antibody is quality control tested by Western blotting. Western blotting, suggested working dilution(s): Use 10 µl per 5 ml antibody dilution buffer for each minigel. For immunofluorescent staining applications, a dilution range of 1:100 is recommended. It is recommended that the reagent be titrated for optimal performance for each application.

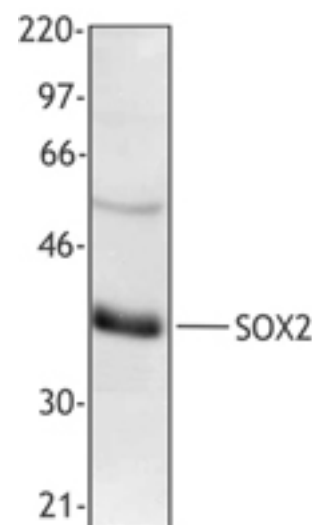
Description: This rabbit polyclonal antibody recognizes human SOX2 also known as SRY (sex determining region Y)-box 2 and ANOP3. SOX2 is a nucleus protein, predicted molecular weight 34 kD. SOX2 belongs to the SOX (SRY-box containing gene) gene family which encodes a group of transcription factors defined by the conserved high motility group (HMG) DNA-binding domain. They are involved in the regulation of embryonic development and in the determination of cell fate. Defects in SOX2 are a cause of true or primary anophthalmos, also called anophthalmia or ANOP3. Anophthalmos is a developmental defect characterized by complete absence of the eyes (rare) or by the presence of vestigial eyes. The poly6308 antibody has been shown to be useful for Western blotting.

Antigen References: 1. Stevanovic M, *et al.* 1994. *Mammalian Genome* 5:640.
2. Okubo T, *et al.* 2006. *Genes Dev.* 20:2654.
3. Ragge NK, *et al.* 2005. *Am. J. Med. Genet.* 135A:1.

Related Products: **Product**
HRP Donkey anti-rabbit IgG (minimal x-reactivity)

Clone
Poly4064

Application
ELISA, IHC, WB



NTERA-2 whole cell extract was resolved by electrophoresis, transferred to nitrocellulose and probed with rabbit polyclonal antibody raised against the N-terminal region of SOX2. Proteins were visualized using HRP Donkey anti-rabbit IgG and a chemiluminescence detection system.



For research use only. Not for diagnostic use. Not for resale. BioLegend will not be held responsible for patent infringement or other violations that may occur with the use of our products.



*These products may be covered by one or more Limited Use Label Licenses (see the BioLegend Catalog or our website, www.biollegend.com/ordering#license). BioLegend products may not be transferred to third parties, resold, modified for resale, or used to manufacture commercial products, reverse engineer functionally similar materials, or to provide a service to third parties without written approval of BioLegend. By use of these products you accept the terms and conditions of all applicable Limited Use Label Licenses. Unless otherwise indicated, these products are for research use only and are not intended for human or animal diagnostic, therapeutic or commercial use.