

## Purified anti-PRC1

**Catalog # / Size:** 629001 / 25 µg  
629002 / 100 µg

**Clone:** 6G2

**Isotype:** Mouse IgG2b, κ

**Immunogen:** Amino Acid: 1-150

**Reactivity:** Human

**Preparation:** The antibody was purified by affinity chromatography.

**Formulation:** This antibody is provided in phosphate-buffered solution, pH 7.2, containing 0.09% sodium azide at 0.5 mg/ml.

**Concentration:** 0.5 mg/ml

**Storage:** The antibody solution should be stored undiluted at 4°C.

## Applications:

**Applications:** WB - *Quality tested*

**Recommended Usage:** Each lot of this antibody is quality control tested by Western blotting. Western blotting, suggested working dilution(s): Use 5 µg per 5 ml antibody dilution buffer for each mini-gel. It is recommended that the reagent be titrated for optimal performance for each application.

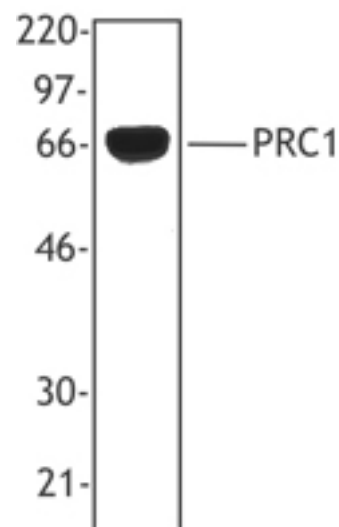
**Description:** PRC1 (also known as protein regulator of cytokinesis 1 and mitotic spindle-associated CDK substrate) is a member of the MAP65/ASE1 family with a molecular weight of approximately 72 kD. PRC1 localization changes with cell-cycle position and can be found in the nucleus, the mitotic spindle, and the cell mid-body. PRC1 is a mitotic spindle-associated CDK substrate protein required for cytokinesis and maintenance of the spindle midzone. PRC1 can be modified by phosphorylation and has been shown to interact with Cdc2 and Cdk2. The 6G2 antibody recognizes the human PRC1 protein and has been shown to be useful for Western blotting.

**Antigen References:** 1. Jiang W, *et al.* 1998. *Mol. Cell* 2:877.  
2. Mollinari C, *et al.* 2002. *J. Cell Biol.* 157:1175.

**Related Products:** **Product**  
HRP Goat anti-mouse IgG (minimal x-reactivity)

**Clone**  
Poly4053

**Application**  
ELISA, IHC, WB



*Hela cell extracts were resolved by electrophoresis, transferred to nitrocellulose, and probed with monoclonal antibody reactive against PRC1 (clone 6G2). Proteins were visualized using a goat anti-mouse secondary conjugated to HRP and a chemiluminescence detection system.*



For research use only. Not for diagnostic use. Not for resale. BioLegend will not be held responsible for patent infringement or other violations that may occur with the use of our products.



\*These products may be covered by one or more Limited Use Label Licenses (see the BioLegend Catalog or our website, [www.biologend.com/ordering#license](http://www.biologend.com/ordering#license)). BioLegend products may not be transferred to third parties, resold, modified for resale, or used to manufacture commercial products, reverse engineer functionally similar materials, or to provide a service to third parties without written approval of BioLegend. By use of these products you accept the terms and conditions of all applicable Limited Use Label Licenses. Unless otherwise indicated, these products are for research use only and are not intended for human or animal diagnostic, therapeutic or commercial use.