

# Product Data Sheet

## Biotin anti-Tubulin-alpha

**Catalog # / Size:** 627903 / 25 µg  
627904 / 100 µg

**Clone:** 10D8

**Isotype:** Mouse IgM, κ

**Immunogen:** Recombinant full length human α-tubulin

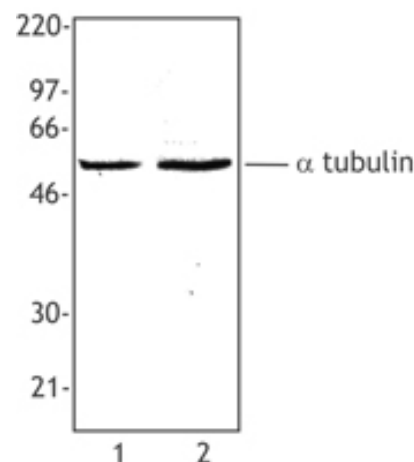
**Reactivity:** Human, Mouse, Rat, and all species

**Preparation:** The antibody was conjugated with biotin under optimal conditions, and is at >85% purity. The solution is free of unconjugated biotin.

**Formulation:** This antibody is provided in phosphate-buffered solution, pH 7.4, containing 0.09% sodium azide at 0.5 mg/ml.

**Concentration:** 0.5 mg/ml

**Storage:** The antibody solution should be stored undiluted at 4°C. **Do not freeze.**



*Hela cell extract (Lane 1) or NIH3T3 cell extract (Lane 2) was resolved by electrophoresis, transferred to nitrocellulose and probed with monoclonal anti-α-tubulin (Clone 10D8) antibody. Proteins were visualized using a goat anti-mouse secondary conjugated to HRP and a chemiluminescence detection system.*

## Applications:

**Applications:** WB, IF

**Recommended Usage:** Each lot of this antibody is quality control tested by Western blotting. For Western blotting, suggested working dilution(s): Use 5 µg per 5 ml antibody dilution buffer for each mini-gel. For immunofluorescent staining applications, a concentration range of 1-4 µg/ml is recommended. It is recommended that the reagent be titrated for optimal performance for each application.

**Application References:** 1. Chou HYE, *et al.* 2006. *J. Biol. Chem.* 281:15201.  
2. Yoder A, *et al.* 2011. *J. Virol.* 85:3020. PubMed

**Description:** Tubulin, one of the major constituents of microtubules, is a dimeric protein consisting of an alpha and beta chain. Tubulin is a highly conserved protein that is ubiquitously expressed. Tubulin is a GTP-binding protein that can be modified by phosphorylation and acetylation. Tubulin interacts with a variety of proteins including RAC GTPase activating protein 1, ZAP70, Polo-like kinase, c-Myc, Fyn, and microtubule associated protein 1A. The 10D8 antibody recognizes α-tubulin in all species and is useful for Western blotting, and immunofluorescence staining. The 10D8 antibody can also be used to monitor protein loading in Western blotting.

**Antigen References:** 1. Cowan NJ, *et al.* 1983. *Mol. Cell. Biol.* 3:1738.  
2. Miller FD, *et al.* 1987. *J. Cell Biol.* 105:3065.  
3. Wilde CD, *et al.* 1982. *Proc. Natl. Acad. Sci. USA* 79:96.

### Related Products:

Product  
HRP Streptavidin  
Biotin Mouse IgM, κ Isotype Ctrl

### Clone

MM-30

### Application

ELISA, ELISPOT, IHC, WB  
FC, ICFC



For research use only. Not for diagnostic use. Not for resale. BioLegend will not be held responsible for patent infringement or other violations that may occur with the use of our products.



\*These products may be covered by one or more Limited Use Label Licenses (see the BioLegend Catalog or our website, [www.biollegend.com/ordering#license](http://www.biollegend.com/ordering#license)). BioLegend products may not be transferred to third parties, resold, modified for resale, or used to manufacture commercial products, reverse engineer functionally similar materials, or to provide a service to third parties without written approval of BioLegend. By use of these products you accept the terms and conditions of all applicable Limited Use Label Licenses. Unless otherwise indicated, these products are for research use only and are not intended for human or animal diagnostic, therapeutic or commercial use.