

Product Data Sheet

Purified anti-Nod2

Catalog # / Size: 625801 / 25 µg
625802 / 100 µg

Clone: NOD-15

Isotype: Mouse IgG2a, κ

Immunogen: Recombinant human NOD2

Reactivity: Human Nod2, does not cross-react with Nod1

Preparation: The antibody was purified by affinity chromatography.

Formulation: This antibody is provided in phosphate-buffered solution, pH 7.2, containing 0.09% sodium azide.

Concentration: 0.5 mg/ml

Storage: Upon receipt, store undiluted at 4°C.

Applications:

Applications: WB - *Quality tested*

Recommended Usage: Each lot of this antibody is quality control tested by Western blotting. Western blotting, suggested working dilution(s): Use 5 µg antibody per 5 ml antibody dilution buffer for each mini-gel. It is recommended that the reagent be titrated for optimal performance for each application.

Description: Nod2, also known as caspase recruitment domain-containing protein 15, CARD15, and inflammatory bowel disease protein 1, is a monocyte-specific cytoplasmic protein containing two N-terminal caspase recruitment domains (CARD domains), and multiple leucine-rich repeats with a predicted molecular weight 115 kD. Alternative initiation produces two isoforms of Nod2. Nod2 is thought to confer responsiveness to intracellular bacterial lipopolysaccharide (LPS), and defects in Nod2 have been linked to several diseases including Blau syndrome, Crohn's disease, and ulcerative colitis. Knock-out animals has been shown to have dramatically altered responses to bacterial pathogens in the gut. Nod2 binds to the receptor interacting kinase 1 protein via CARD-CARD interaction and induces NF-κB and IKK-gamma. The NOD-15 monoclonal antibody recognizes the human Nod2 protein and has been shown to be useful for Western blotting. The NOD-15 antibody does not cross-react with human Nod1.

Antigen References:

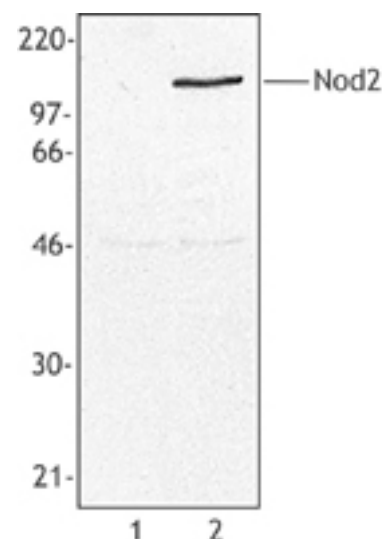
1. Ogura Y, *et al.* 2001. *J. Biol. Chem.* 276:4812.
2. Hugot JP, *et al.* 2001. *Nature* 411:599.
3. Miceli-Richard C, *et al.* 2001. *Nat. Genet.* 29:19.
4. Kobayashi KS, *et al.* 2005. *Science* 307:731.

Related Products:

Product
HRP Goat anti-mouse IgG (minimal x-reactivity)
Purified Mouse IgG2a, κ Isotype Ctrl

Clone
Poly4053
MOPC-173

Application
ELISA, IHC, WB
FC, ICC, IF, IHC, IP, WB



Cell extract from MCF-7 cells transfected with either human Nod1 (Lane 1) or human Nod2 (Lane 2) was resolved by electrophoresis, transferred to nitrocellulose, and probed with monoclonal anti-Nod2 antibody (clone NOD-15). Proteins were visualized using a goat anti-mouse secondary conjugated to HRP and a chemiluminescence detection system. The NOD-15 antibody is specific for human Nod2 and does not cross-react with human Nod1.



For research use only. Not for diagnostic use. Not for resale. BioLegend will not be held responsible for patent infringement or other violations that may occur with the use of our products.



*These products may be covered by one or more Limited Use Label Licenses (see the BioLegend Catalog or our website, www.biollegend.com/ordering#license). BioLegend products may not be transferred to third parties, resold, modified for resale, or used to manufacture commercial products, reverse engineer functionally similar materials, or to provide a service to third parties without written approval of BioLegend. By use of these products you accept the terms and conditions of all applicable Limited Use Label Licenses. Unless otherwise indicated, these products are for research use only and are not intended for human or animal diagnostic, therapeutic or commercial use.