

Purified anti-STAT3

Catalog # / Size: 624601 / 50 µl (5 Western Blots)
 624602 / 200 µl (20 Western Blots)

Clone: Poly6246

Isotype: Rabbit IgG

Immunogen: Peptide mapping to the carboxy terminus of mouse STAT3 p92

Reactivity: Human, Mouse, rat (does not react with STAT3b)

Preparation: The antibody was purified by antigen-affinity chromatography.

Formulation: This antibody is provided in phosphate-buffered solution, pH 7.2, containing 0.09% sodium azide and 0.2% gelatin.

Storage: The antibody solution should be stored undiluted at 4°C. DO NOT FREEZE.

Applications:

Applications: WB-Quality tested

Recommended Usage: Each lot of this antibody is quality control tested by Western blotting. Western blotting, suggested working dilution(s): Use 10 µl per 5 ml antibody dilution buffer for each mini-gel. It is recommended that the reagent be titrated for optimal performance for each application.

Description: STAT 3 is an 88 kD member of the STAT (signal transducer and activators of transcription) protein family that is phosphorylated in response to cytokine receptor-associated kinase activity. Phosphorylation of STAT 3 induces nuclear translocation to activate transcription. STAT3 is expressed in brain, heart, placenta, lung, liver, skeletal muscle, kidney, and pancreas. STAT 3 forms both homo- and heterotrimers and is involved in the activation of genes required for cell growth and apoptosis. STAT 3 is also involved in gp130 signaling and binds to IL-6 response elements in various acute phase protein promoters. STAT 3 is phosphorylated by signaling from IFNs, EGF, FGF, IL-5, HGF, LIF, and BMP2. STAT 3 activity is inhibited by PIAS3 and GRIM-19 and can also be regulated by Rac1 protein. STAT 3 interacts with Rac1, STAT 1, and NCOA1 proteins. The Poly6246 antibody recognizes the C-terminal region of human, mouse, and rat STAT3 and has been shown to be useful for Western blotting, immunoprecipitation, and immunohistochemistry. The Poly6246 antibody does not react with STAT3b.

- Antigen References:**
1. Lufe C, *et al.* 2003. *EMBO J.* 22:1325.
 2. Deo D, *et al.* 2002. *J. Biol. Chem.* 277:21237.
 3. Pfeffer L, *et al.* 1997. *Science* 276:1418.
 4. Akira S, *et al.* 1994. *Cell* 77:63.

Related Products: Product

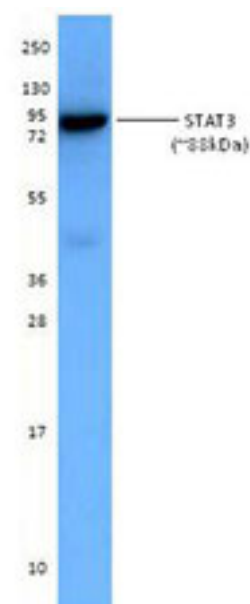
Purified anti-NCOA1/SRC1	Clone
Purified anti-NCOA1/SRC1	Poly6087
Purified anti-STAT 4	Poly6088
Purified anti-STAT 5b	Poly6100
Purified anti-STAT 6	Poly6101
HRP Donkey anti-rabbit IgG (minimal x-reactivity)	Poly6102
	Poly4064

Clone

Poly6087
 Poly6088
 Poly6100
 Poly6101
 Poly6102
 Poly4064

Application

IF
 WB
 WB
 WB
 WB
 ELISA, IHC, WB



Hela cell extract was resolved by electrophoresis, transferred to nitrocellulose, and probed with purified anti-STAT3 antibody (clone Poly6246). Proteins were visualized using a donkey anti-rabbit secondary antibody conjugated to HRP and chemiluminescence.



For research use only. Not for diagnostic use. Not for resale. BioLegend will not be held responsible for patent infringement or other violations that may occur with the use of our products.



*These products may be covered by one or more Limited Use Label Licenses (see the BioLegend Catalog or our website, www.biolegend.com/ordering#license). BioLegend products may not be transferred to third parties, resold, modified for resale, or used to manufacture commercial products, reverse engineer functionally similar materials, or to provide a service to third parties without written approval of BioLegend. By use of these products you accept the terms and conditions of all applicable Limited Use Label Licenses. Unless otherwise indicated, these products are for research use only and are not intended for human or animal diagnostic, therapeutic or commercial use.