

# Product Data Sheet

## Purified anti-STAT2

**Catalog # / Size:** 624502 / 200 µl (20 Western Blots)  
**Clone:** Poly6245  
**Isotype:** Rabbit IgG  
**Immunogen:** Peptide mapping to the carboxy terminus of human STAT2  
**Reactivity:** Human  
**Preparation:** The antibody was purified by antigen-affinity chromatography.  
**Formulation:** This antibody is provided in phosphate-buffered solution, pH 7.2, containing 0.09% sodium azide and 0.2% gelatin.  
**Storage:** The antibody solution should be stored undiluted at 4°C. DO NOT FREEZE.

## Applications:

**Applications:** WB - *Quality tested*  
 IP - *Reported in the literature*

**Recommended Usage:** Each lot of this antibody is quality control tested by Western blotting. Western blotting, suggested working dilution(s): Use 10 µl per 5 ml antibody dilution buffer for each mini-gel. For IHC, use a 1:50 dilution of antibody for staining. Antigen retrieval for IHC of formalin-fixed paraffin-embedded tissue using 0.01 M sodium citrate buffer is recommended. It is recommended that the reagent be titrated for optimal performance for each application.

**Application Notes:** Additional reported applications (for the relevant formats) include: immunoprecipitation.

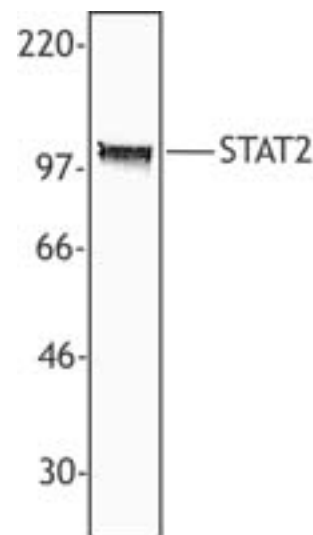
**Description:** STAT2, a 113 kD member of the STAT (signal transducer and activators of transcription) protein family, is phosphorylated in response to interferon alpha receptor signaling by Janus kinase 1. Phosphorylation of STAT 2 induces nuclear translocation to activate transcription. STAT2 is highly expressed in the skin and thymus. STAT 2 forms complex with STAT1 and p48 to activate transcription and does not bind DNA directly. STAT 3 interacts with interferon regulatory factor 9, interferon alpha receptor, STAT 1, p48, and CREB binding protein. The Poly6245 antibody recognizes the C-terminal region of human STAT2 and has been shown to be useful for Western blotting, immunoprecipitation, and immunohistochemistry.

**Antigen References:** 1. Bluysen HAR, *et al.* 1997. *J. Biol. Chem.* 272:4600.  
 2. Qureshi AA, *et al.* 1996. *Mol. Cell. Biol.* 16:288.

**Related Products:** **Product**  
 HRP Donkey anti-rabbit IgG (minimal x-reactivity)

**Clone**  
 Poly4064

**Application**  
 ELISA, IHC, WB



*Hela cell extract was resolved by electrophoresis, transferred to nitrocellulose, and probed with rabbit anti-STAT2 polyclonal antibody. Proteins were visualized using a donkey anti-rabbit secondary antibody conjugated to HRP and a chemiluminescence system.*



For research use only. Not for diagnostic use. Not for resale. BioLegend will not be held responsible for patent infringement or other violations that may occur with the use of our products.



\*These products may be covered by one or more Limited Use Label Licenses (see the BioLegend Catalog or our website, [www.biollegend.com/ordering#license](http://www.biollegend.com/ordering#license)). BioLegend products may not be transferred to third parties, resold, modified for resale, or used to manufacture commercial products, reverse engineer functionally similar materials, or to provide a service to third parties without written approval of BioLegend. By use of these products you accept the terms and conditions of all applicable Limited Use Label Licenses. Unless otherwise indicated, these products are for research use only and are not intended for human or animal diagnostic, therapeutic or commercial use.