

Product Data Sheet

Purified anti-ERK2

Catalog # / Size: 624201 / 50 µl (5 Western Blots)

Clone: Poly6242

Isotype: Rabbit IgG

Immunogen: Peptide mapping to the carboxy terminus of rat ERK2

Reactivity: Rat, Human, Mouse

Preparation: The antibody was purified by affinity chromatography.

Formulation: This antibody is provided in phosphate-buffered solution, pH 7.2, containing 0.09% sodium azide, 50% glycerol, and 0.1% gelatin.

Storage: Upon receipt, store frozen at -20° C.

Applications:

Applications: WB - *Quality tested*
IHC, IP- *Validated*

Recommended Usage: Each lot of this antibody is quality control tested by Western blotting. Western blotting, suggested working dilution(s): Use 10 µl per 5 ml of antibody dilution buffer for each mini-gel. For IHC, use a 1:50 dilution of antibody for staining. Antigen retrieval for IHC of formalin-fixed paraffin-embedded tissue using 0.01 M sodium citrate buffer is recommended. It is recommended that the reagent be titrated for optimal performance for each application.

Description: ERK2 is a 42 kD dual specificity kinase also known as mitogen activated protein kinase 1, extracellular signal regulated kinase 2, MAPK1, and p41mapk. The MAPK family includes several subgroups encompassing the ERK, JNK, and p38 kinases. ERK is phosphorylated in response to various extracellular signals inducing homodimerization and nuclear translocation where it phosphorylates target proteins regulating cell growth and survival. ERK2 interacts with a number of proteins including STAT5A, estrogen receptor alpha, ELK1, MEK1, protein kinase c epsilon, RAF1, ribosomal S6 kinase, VAV1, STAT5b, Shc and many others. The Poly6242 antibody recognizes human, mouse, and rat ERK2 and has been shown to be useful for Western blotting, immunoprecipitation, and immunohistochemistry.

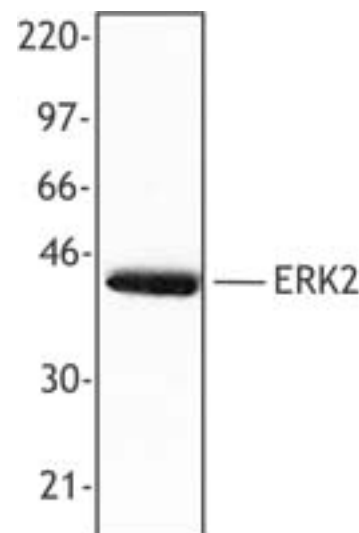
Antigen References: 1. Khokhlatchev AV, *et al.* 1998. *Cell* 93:605.
2. Boulton TG, *et al.* 1991. *Cell* 65:663.

Related Products:

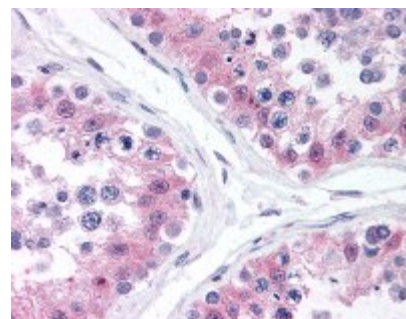
Product
HRP Donkey anti-rabbit IgG (minimal x-reactivity)

Clone
Poly4064

Application
ELISA, IHC, WB



Hela cell extract was resolved by electrophoresis, transferred to nitrocellulose, and probed with rabbit anti-ERK2 polyclonal antibody. Proteins were visualized using a donkey anti-rabbit secondary antibody conjugated to HRP and a chemiluminescence system.



Formalin-fixed paraffin-embedded human testis tissue was stained with Poly6242 and developed with an alkaline phosphatase chromogen substrate (red color). Tissue was counterstained with H&E (blue/pink). Magnification, 40X.



For research use only. Not for diagnostic use. Not for resale. BioLegend will not be held responsible for patent infringement or other violations that may occur with the use of our products.



*These products may be covered by one or more Limited Use Label Licenses (see the BioLegend Catalog or our website, www.biollegend.com/ordering#license). BioLegend products may not be transferred to third parties, resold, modified for resale, or used to manufacture commercial products, reverse engineer functionally similar materials, or to provide a service to third parties without written approval of BioLegend. By use of these products you accept the terms and conditions of all applicable Limited Use Label Licenses. Unless otherwise indicated, these products are for research use only and are not intended for human or animal diagnostic, therapeutic or commercial use.