

Product Data Sheet

Purified anti-Paxillin

Catalog # / Size: 624001 / 50 µl (5 Western blots)

Clone: PAX227

Isotype: Mouse IgG1, κ

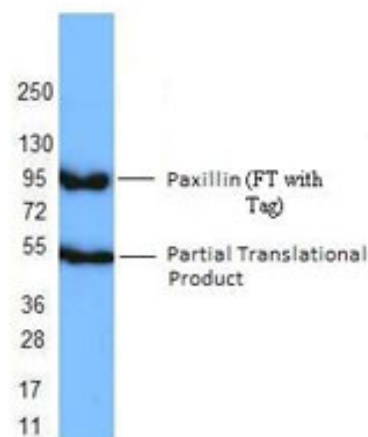
Immunogen: Recombinant full length

Reactivity: Mouse, Human

Preparation: The antibody was purified by affinity chromatography.

Formulation: This antibody is provided in phosphate-buffered solution, pH 7.2, containing 0.09% sodium azide and 50% glycerol.

Storage: Upon receipt, store frozen at -20° C.



10 ng of Paxillin recombinant protein was resolved by electrophoresis, transferred to nitrocellulose, and probed with anti-Paxillin antibody (clone PAX227). Proteins were visualized using a goat anti-mouse secondary conjugated to HRP and chemiluminescence detection.

Applications:

Applications: WB, IP, IHC, IF

Recommended Usage: Each lot of this antibody is quality control tested by Western blotting. Western blotting, suggested working dilution(s): Use 10 µl per 5 ml antibody dilution buffer for each mini-gel. For immunofluorescence microscopy: Use a dilution range of 1:100~1:400. It is recommended that the reagent be titrated for optimal performance for each application.

Application Notes: Additional reported applications (for relevant formats of this clone) include: immunofluorescence microscopy¹, immunoprecipitation² and immunohistochemical staining² of formalin-fixed paraffin embedded sections.

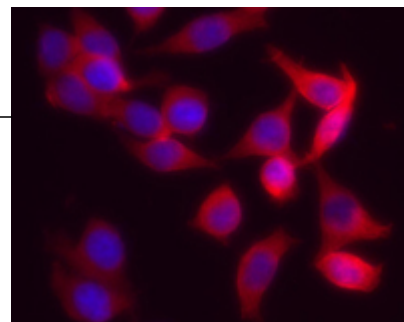
Application References:

1. Yao H, *et al.* 2006. *Oncogene* 25:2285. (IF, WB) PubMed
2. Li D, *et al.* 2009. *Tumori* 95:769 (IP, IHC) PubMed
3. Heinhuis B, *et al.* 2012. *J. Biol Chem.* 287:5733. PubMed.
4. Cai Ep, *et al.* 2012. *Diabetes.* 61:1708. PubMed.

Description: Paxillin (also known as peroxisomal membrane protein 3) is a cytoplasmic protein with LIM metal-binding repeat homology and LIM domains. There are three isoforms of this protein designated as α, β, γ; approximate molecular weight 68 kD. Paxillin is localized to actin-membrane attachment at sites of cell adhesion to extracellular matrix (focal adhesion). This protein undergoes cell adhesion-dependent tyrosine phosphorylation. Paxillin has been shown to interact with FAK, vinculin, src, Crk, p210BRC / ABL, talin, and integrin-β₁. The PAX227 monoclonal antibody recognizes human and mouse paxillin and has been shown to be useful for Western blotting.

Antigen References:

1. Leventhal P, *et al.* 1997. *J. Biol. Chem.* 272:5214.
2. Mazaki Y, *et al.* 1997. *J. Biol. Chem.* 272:7437.
3. Kirchner J, *et al.* 2003. *J. Cell Sci.* 116:975.
4. Tang D, *et al.* 2003. *J. Physiol.* 42:858.



Immunofluorescent microscope analysis of HeLa cells using anti-Paxillin monoclonal antibody (clone PAX227), followed by Rhodamine Red-X conjugated Donkey anti-mouse IgG and DAPI.



For research use only. Not for diagnostic use. Not for resale. BioLegend will not be held responsible for patent infringement or other violations that may occur with the use of our products.



*These products may be covered by one or more Limited Use Label Licenses (see the BioLegend Catalog or our website, www.biollegend.com/ordering#license). BioLegend products may not be transferred to third parties, resold, modified for resale, or used to manufacture commercial products, reverse engineer functionally similar materials, or to provide a service to third parties without written approval of BioLegend. By use of these products you accept the terms and conditions of all applicable Limited Use Label Licenses. Unless otherwise indicated, these products are for research use only and are not intended for human or animal diagnostic, therapeutic or commercial use.