

# Product Data Sheet

## Purified anti-p38 MAPK

**Catalog # / Size:** 622401 / 50 µl (5 Western blots)  
 622402 / 200 µl (20 Western blots)

**Clone:** Poly6224

**Isotype:** Rabbit IgG

**Immunogen:** peptide-KLH, C terminal

**Reactivity:** Mouse, Rat, Human

**Preparation:** The antibody was purified by antigen-affinity chromatography.

**Formulation:** This antibody is provided in phosphate-buffered solution, pH 7.2, containing 0.09% sodium azide, 0.2% BSA (US Origin) and 50% glycerol.

**Storage:** Upon receipt, store at -20° C.

## Applications:

**Applications:** WB - *Quality tested*  
 IHC - *Validated*

**Recommended Usage:** Each lot of this antibody is quality control tested by Western blotting. Western blotting, suggested working dilution(s): Use 10 µl per 5 ml antibody dilution buffer for each mini-gel. For IHC, use a 1:100 dilution of antibody for staining. Antigen retrieval for IHC of formalin-fixed paraffin-embedded tissue using 0.01 M sodium citrate buffer is recommended. It is recommended that the reagent be titrated for optimal performance for each application.

**Application References:** 1. Chen W, *et al.* 2012. *Am J Physiol Lung Cell Mol Physiol.* 303:279. *PubMed*.

**Description:** p38 mitogen-activated protein kinase (MAPK) is a member of the stress activated kinase family with a molecular weight of 38 kD. MAPK can be activated by a number of stimuli including heat, changes in osmolarity, irradiation, and cold. The MAPKs require dual phosphorylation (threonine and tyrosine) for enzymatic activation. The p38 MAP kinase is required for G2 cell cycle delay after UV irradiation, also participates in cytokine production (IL-6 and erythropoietin). The Poly6224 antibody recognizes human, mouse, and rat p38 MAPK and has been shown to be useful for Western blotting.

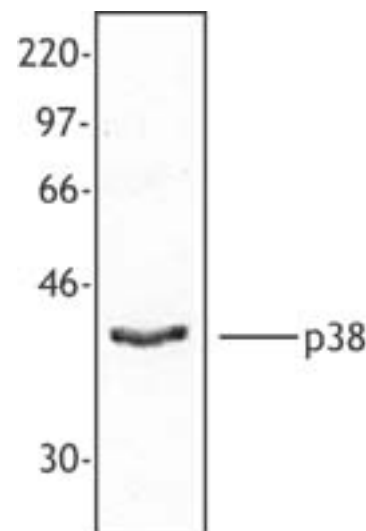
**Antigen References:** 1. Bulavin DV, *et al.* 2001. *Nature* 411:102.  
 2. Han J, *et al.* 1994. *Science* 265:808.  
 3. Lee JC, *et al.* 1994. *Nature* 372:739.

**Related Products:**

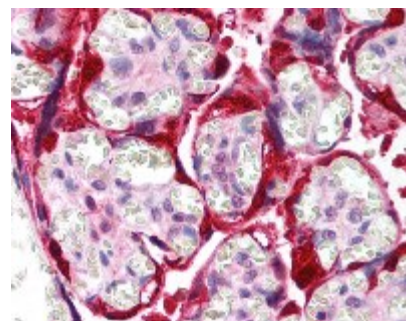
**Product**  
 HRP Donkey anti-rabbit IgG (minimal x-reactivity)

**Clone**  
 Poly4064

**Application**  
 ELISA, IHC, WB



*Hela cell extract was resolved by electrophoresis, transferred to nitrocellulose, and probed with rabbit anti-p38 MAPK antibody. Proteins were visualized using a donkey anti-rabbit secondary conjugated to HRP and a chemiluminescence detection system.*



*Formalin-fixed paraffin-embedded human placenta tissue was stained with Poly6224 and developed with an alkaline phosphatase chromogen substrate (red color). Tissue was counterstained with H&E (blue/pink). Magnification, 40X.*



For research use only. Not for diagnostic use. Not for resale. BioLegend will not be held responsible for patent infringement or other violations that may occur with the use of our products.



\*These products may be covered by one or more Limited Use Label Licenses (see the BioLegend Catalog or our website, [www.biollegend.com/ordering#license](http://www.biollegend.com/ordering#license)). BioLegend products may not be transferred to third parties, resold, modified for resale, or used to manufacture commercial products, reverse engineer functionally similar materials, or to provide a service to third parties without written approval of BioLegend. By use of these products you accept the terms and conditions of all applicable Limited Use Label Licenses. Unless otherwise indicated, these products are for research use only and are not intended for human or animal diagnostic, therapeutic or commercial use.