

Purified anti-Aurora B Phospho (Thr232)

Catalog # / Size: 636101 / 25 μ l
636102 / 100 μ l

Clone: Poly6361

Isotype: Rabbit IgG

Immunogen: Modified peptide

Preparation: The antibody was purified by affinity chromatography.

Formulation: This antibody is provided in phosphate-buffered solution, pH 7.2, containing 0.09% sodium azide and 50% glycerol.

Storage: Upon receipt, store frozen at -20°C.

Applications:

Applications: IF

Recommended Usage: Each lot of this antibody is quality control tested by immunofluorescence staining. For immunofluorescence microscopy: Use a dilution range of 1:100–1:400. It is recommended that the reagent be titrated. For IHC, use a 1:50 dilution of antibody for staining. Antigen retrieval for IHC of formalin-fixed paraffin-embedded tissue using 0.01 M sodium citrate buffer is recommended.

Application References: 1. Luciano AM, *et al.* 2010. *Reproduction*. 140:663. PubMed
2. Gonzalez ME, *et al.* 2011. *Cancer Res.* 15:2360. PubMed

Description: Aurora B belongs to Serine/threonine kinase family, Aurora subfamily. Predicted molecular weight 39 kD. This kinase is highly expressed in thymus and many cancers and is also expressed in the spleen, lung, testis, colon, placenta and fetal liver. Aurora B is expressed during S and G2/M phase and is up regulated in cancer cells during M phase. Aurora B localizes to centromeres in early mitosis and then the spindle midzone in anaphase and is required for histone H3 phosphorylation, chromosome alignment, centrosome maturation, activation of the spindle assembly checkpoint and cytokinesis. The Poly6361 antibody recognizes human phospho-Aurora B (Thr232) and has been shown to be useful for immunofluorescence staining.

Antigen References: Shindo M, *et al.* 1998. *Biochem. Biophys. Res. Commun.* 244:285
Bischoff JR, *et al.* 1999. *Trends Cell Biol.* 9:454
Andrews PD, *et al.* 2003. *Opin. Cell Biol.* 15:672

Related Products: **Product**

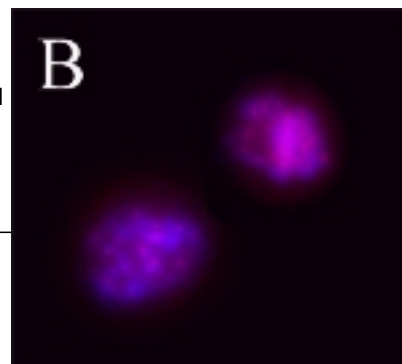
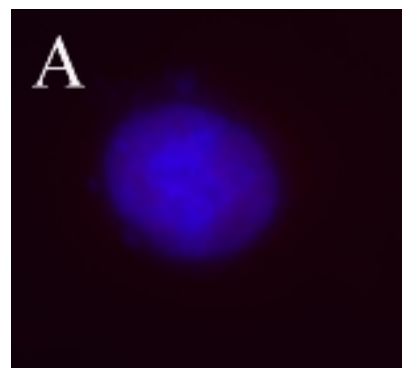
Cy3 Donkey anti-rabbit IgG (minimal x-reactivity)
FITC Donkey anti-rabbit IgG (minimal x-reactivity)

Clone

Poly4064
Poly4064

Application

IF
IF



Untreated HeLa cells (Panel A), or overnight nocodazole-treated HeLa cells (Panel B) stained with purified rabbit polyclonal antibody against Aurora B Phospho (Thr232), followed by Cy3 conjugated Donkey anti-rabbit IgG and DAPI.



For research use only. Not for diagnostic use. Not for resale. BioLegend will not be held responsible for patent infringement or other violations that may occur with the use of our products.



*These products may be covered by one or more Limited Use Label Licenses (see the BioLegend Catalog or our website, www.biolegend.com/ordering#license). BioLegend products may not be transferred to third parties, resold, modified for resale, or used to manufacture commercial products, reverse engineer functionally similar materials, or to provide a service to third parties without written approval of BioLegend. By use of these products you accept the terms and conditions of all applicable Limited Use Label Licenses. Unless otherwise indicated, these products are for research use only and are not intended for human or animal diagnostic, therapeutic or commercial use.