

Purified anti-ATIC

Catalog # / Size: 635602 / 100 µg

Clone: F38P7H9

Isotype: Mouse IgG1, κ

Immunogen: Ovalbumin-conjugated synthetic Peptide AHTNLRLFHH

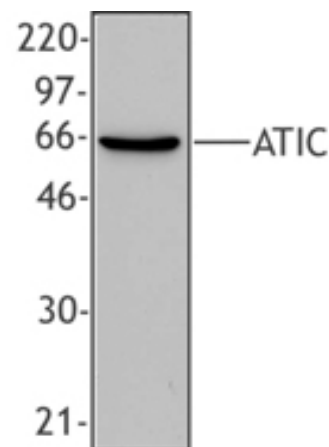
Reactivity: Human, Mouse, Rat, Frog, and Fruit fly

Preparation: The antibody was purified by affinity chromatography.

Formulation: This antibody is provided in phosphate-buffered solution, pH 7.2, containing 0.09% sodium azide at 0.5 mg/ml.

Concentration: 0.5 mg/ml

Storage: Upon receipt, store undiluted at 4°C.



Western blot analysis of extract from HeLa cells using anti-ATIC, clone F38P7H9.

Applications:

Applications: WB - *Quality tested*

Recommended Usage: Each lot of this antibody is quality control tested by Western blotting. For Western blotting, suggested working dilution(s): Use 5-10 µg per 5 ml antibody dilution buffer for each mini-gel. It is recommended that the reagent be titrated for optimal performance for each application.

Description: ATIC (AICAR transformylase/IMP cyclohydrolase) belongs to the purH family, expressed in the cytoplasm, predicted molecular weight approximately 65 kD. ATIC catalyzes the penultimate and final steps in the de novo purine nucleotide biosynthesis pathway. ATIC acts as a bifunctional enzyme catalyze the formation of FAICAR and IMP. AICA-ribosiduria is a recently discovered inherited metabolic disease caused by a defect in final steps of purine de novo biosynthesis. Clone F38P7H9 has been shown to be useful for western blotting and immunohistochemistry of human, mouse, rat, frog and fruit fly ATIC.

Antigen References: 1. Rayl EA, et al. 1996. *J. Biol. Chem.* 271:2225

Related Products: Product

AKP Goat anti-mouse IgG (minimal x-reactivity)
Biotin Goat anti-mouse IgG (minimal x-reactivity)
HRP Goat anti-mouse IgG (minimal x-reactivity)

Clone

Poly4053
Poly4053
Poly4053

Application

ELISA, WB, IHC
FC, ELISA, IHC, IF, WB
ELISA, IHC, WB



For research use only. Not for diagnostic use. Not for resale. BioLegend will not be held responsible for patent infringement or other violations that may occur with the use of our products.



*These products may be covered by one or more Limited Use Label Licenses (see the BioLegend Catalog or our website, www.biolegend.com/ordering#license). BioLegend products may not be transferred to third parties, resold, modified for resale, or used to manufacture commercial products, reverse engineer functionally similar materials, or to provide a service to third parties without written approval of BioLegend. By use of these products you accept the terms and conditions of all applicable Limited Use Label Licenses. Unless otherwise indicated, these products are for research use only and are not intended for human or animal diagnostic, therapeutic or commercial use.