

Purified anti-Bcl-2

Catalog # / Size: 633501 / 25 µg
633502 / 100 µg

Clone: BCL/10C4

Isotype: Mouse IgG1, κ

Immunogen: N-terminal, Amino acid residues 61-76 of mouse Bcl-2

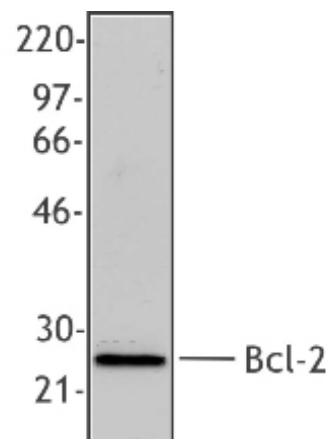
Reactivity: Mouse, Rat

Preparation: The antibody was purified by affinity chromatography.

Formulation: This antibody is provided in phosphate-buffered solution, pH 7.2, containing 0.09% sodium azide at 0.5 mg/ml.

Concentration: 0.5 mg/ml

Storage: Upon receipt, store undiluted at at 4°C.



Western blot analysis of extracts from mouse splenocytes using anti-Bcl-2, clone BCL/10C4.

Applications:

Applications: WB - *Quality tested*
IP, IF, - *Reported in the literature*

Recommended Usage: Each lot of this antibody is quality control tested by Western blotting. For Western blotting, suggested working dilution(s): Use 5 µg per 5 ml antibody dilution buffer for each mini-gel. For immunofluorescence microscopy: Use a dilution range of 1–4 µg/ml. It is recommended that the reagent be titrated for optimal performance for each application.

Application References:

1. Hsu YT, *et al.* 1997. *J. Biol. Chem.* 272:13829.
2. Zuber J, *et al.* 2011. *Genes Dev.* 25:1628. PubMed.
3. Doi K, *et al.* 2012. *Biochem Biophys Res Commun.* 425:107. PubMed.

Description: Bcl-2 (B-cell leukemia 2) is an apoptotic protein and a member of the Bcl-2 family containing BH1-4 domains. Two reported isoforms exist $\alpha=25$ kD; $\beta=22$ kD. The Bcl-2 protein forms homo- or hetero-dimers with other Bcl-2 family members. Bcl-2 is distributed in the outer mitochondrial membrane, intracellular membrane nuclear envelope, and endoplasmic reticulum. This protein blocks apoptotic death by controlling mitochondrial membrane permeability. Cleavage of Bcl-2 can convert to pro-apoptotic (by cleavage of BH4 domain). Bcl-2 has been reported to regulate cell cycle progression via ROS. This protein is modified by ASK1/JNK1, PKC, ERKs, and stress-activated kinase phosphorylation and can be ubiquitinated. Bcl-2 has been shown to interact with Apaf-1, Raf-1, TP53BP2, caspase-3, and form heterodimers with Bax, Bad, Bak, Bcl-xL, and Bag-1. Bcl-2 is modified by phosphorylation and ubiquitination. Clone BCL/10C4 has been shown to be useful for Western blotting, immunoprecipitation, and immunofluorescence of the mouse and rat Bcl-2 protein.

Antigen References:

1. Tsujimoto Y, *et al.* 1986 *P. Natl. Acad. Sci. USA* 83:5214.
2. Yang E, *et al.* 1995. *Cell* 80:285.
3. Huang Z, *et al.* 2000. *Oncogene* 19:6627.
4. Deng X, *et al.* 2003. *Blood.* 102:3179.

Related Products:Product

AKP Goat anti-mouse IgG (minimal x-reactivity)
HRP Goat anti-mouse IgG (minimal x-reactivity)
PE Goat anti-mouse IgG (minimal x-reactivity)
Cy3 Goat anti-mouse IgG (minimal x-reactivity)

Clone

Poly4053
Poly4053
Poly4053
Poly4053

Application

ELISA, WB, IHC
ELISA, IHC, WB
FC
IF



For research use only. Not for diagnostic use. Not for resale. BioLegend will not be held responsible for patent infringement or other violations that may occur with the use of our products.



*These products may be covered by one or more Limited Use Label Licenses (see the BioLegend Catalog or our website, www.biolegend.com/ordering#license). BioLegend products may not be transferred to third parties, resold, modified for resale, or used to manufacture commercial products, reverse engineer functionally similar materials, or to provide a service to third parties without written approval of BioLegend. By use of these products you accept the terms and conditions of all applicable Limited Use Label Licenses. Unless otherwise indicated, these products are for research use only and are not intended for human or animal diagnostic, therapeutic or commercial use.