

# Product Data Sheet

## Purified anti-eIF3H (p40)

**Catalog # / Size:** 646801 / 25 µg  
646802 / 100 µg

**Clone:** 11H5

**Isotype:** Mouse IgG1, κ

**Preparation:** The antibody was purified by affinity chromatography.

**Formulation:** Phosphate-buffered solution, pH 7.2, containing 0.09% sodium azide.

**Concentration:** 0.5 mg/ml

**Storage:** The antibody solution should be stored undiluted at 4°C.

## Applications:

**Applications:** WB - *Quality tested*

**Recommended Usage:** Each lot of this antibody is quality control tested by Western blotting. For Western blotting, the suggested use of this reagent is 1.0 to 2.0 µg per ml. It is recommended that the reagent be titrated for optimal performance for each application.

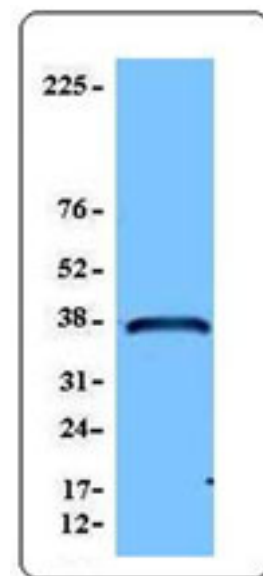
**Description:** The eIF3H (eIF3-p40) is a subunit of eukaryotic translation initiation factor 3 (eIF3) complex that plays a central role in the protein translation initiation. The eIF3 consists of at least 10 subunits ranging from 35 to 170 kd. eIF3-p40 is constitutively expressed in many tissues, including spleen thymus, prostate, colon, ovary, etc.

**Antigen References:** 1. Tymms MJ, *et al.* 1997. *Oncogene* 15:2449  
2. H TK, *et al.* 2000 *Blood* 96:747

**Related Products:** **Product**  
HRP Goat anti-mouse IgG (minimal  
x-reactivity)

**Clone**  
Poly4053

**Application**  
ELISA, IHC,  
WB



*Hela cell extract was resolved by electrophoresis, transferred to nitrocellulose and probed with purified 11H5 (eIF3/p50) antibody. Proteins were visualized using HRP goat anti-mouse secondary antibody conjugate and a chemiluminescent system.*



For research use only. Not for diagnostic use. Not for resale. BioLegend will not be held responsible for patent infringement or other violations that may occur with the use of our products.



\*These products may be covered by one or more Limited Use Label Licenses (see the BioLegend Catalog or our website, [www.biollegend.com/ordering#license](http://www.biollegend.com/ordering#license)). BioLegend products may not be transferred to third parties, resold, modified for resale, or used to manufacture commercial products, reverse engineer functionally similar materials, or to provide a service to third parties without written approval of BioLegend. By use of these products you accept the terms and conditions of all applicable Limited Use Label Licenses. Unless otherwise indicated, these products are for research use only and are not intended for human or animal diagnostic, therapeutic or commercial use.