

Product Data Sheet

Purified anti-Cdk2

Catalog # / Size: 643901 / 25 µg

Clone: AN4.3

Isotype: Mouse IgG2a

Immunogen: CDK2 recombinant protein

Reactivity: Human, Mouse

Preparation: The antibody was purified by affinity chromatography.

Formulation: Phosphate-buffered solution, pH 7.2, containing 0.09% sodium azide.

Concentration: 0.5 mg/ml

Storage: The antibody solution should be stored undiluted at 4°C.

Applications:

Applications: WB - *Quality tested*

Recommended Usage: Each lot of this antibody is quality control tested by Western blotting. Western blotting, suggested working dilution(s): Use 0.5-1 µg per ml antibody dilution buffer. It is recommended that the reagent be titrated for optimal performance for each application.

Description: CDK2 is a cell cycle protein closely related to CDC2(CDK1) that has proved useful as a marker of proliferation. CDK2 binds cyclin type A and E proteins and controls progression into S-phase. This clone AN4.3 does not recognize other CDKs.

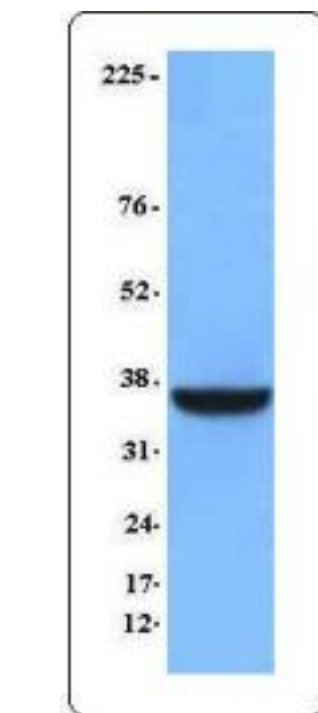
Antigen References: 1. Jeffrey PD, *et al.* 1995. *Nature* 376:313

Related Products:

Product
Purified anti-mouse IgG2a
Cell Staining Buffer
RBC Lysis Buffer (10X)

Clone
RMG2a-62

Application
ELISA, FC
FC, ICC, ICFC
FC, ICFC



Hela cell extract was resolved by electrophoresis, transferred to nitrocellulose and probed with purified anti-Cdk2 antibody. Proteins were visualized using a HRP goat anti-mouse secondary antibody conjugate and a chemiluminescence system.



For research use only. Not for diagnostic use. Not for resale. BioLegend will not be held responsible for patent infringement or other violations that may occur with the use of our products.



*These products may be covered by one or more Limited Use Label Licenses (see the BioLegend Catalog or our website, www.biolegend.com/ordering#license). BioLegend products may not be transferred to third parties, resold, modified for resale, or used to manufacture commercial products, reverse engineer functionally similar materials, or to provide a service to third parties without written approval of BioLegend. By use of these products you accept the terms and conditions of all applicable Limited Use Label Licenses. Unless otherwise indicated, these products are for research use only and are not intended for human or animal diagnostic, therapeutic or commercial use.