

Product Data Sheet

Purified anti-LAT

Catalog # / Size: 641101 / 25 µg
 641102 / 100 µg

Clone: 11B.12

Isotype: Mouse IgG1, κ

Immunogen: GST fusion protein corresponding to residues 31-233 of human LAT, cytoplasmic domain.

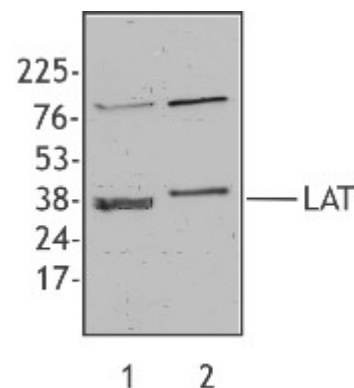
Reactivity: Human, **Cross-Reactivity:** Mouse

Preparation: The antibody was purified by affinity chromatography.

Formulation: This antibody is provided in phosphate-buffered solution, pH 7.2, containing 0.09% sodium azide. Final antibody concentration is 0.5 mg/ml.

Concentration: 0.5 mg/ml

Storage: Upon receipt, store at 4°C



Western blot analysis of extracts from Jurkat cells (lane 1) and mouse thymocytes (lane 2) using anti-LAT, clone 11B.12.

Applications:

Applications: WB - Quality tested
 IP - This application was tested during development

Recommended Usage: Each lot of this antibody is quality control tested by Western blotting. Western blotting, suggested working dilution(s): Use 5 µg antibody per 5 ml antibody dilution buffer for each mini-gel. It is recommended that the reagent be titrated for optimal performance for each application.

Application References: 1. Dorn T, et al. 2007. *Blood* 109:2346.
 2. Sloan D, et al. 2006. *J. Immunol.* 176:1825

Description: LAT is a transmembrane molecule that mediates signaling following the engagement of a number of cell surface receptors including TCR during mature T cell activation, pre-TCR during T cell development, FcγRIII on NK cells, and FcεRI on mast cells. LAT is multiply phosphorylated on tyrosines by ZAP-70 and Syk, which leads to downstream effects that include release of intracellular calcium, PKC activation, MAPK activation and cytoskeletal reorganization. Palmitoylation of LAT is required for its localization to lipid rafts and efficient phosphorylation.

Antigen References: 1. Zhang W et al. 1998. *Cell* 92:83.
 2. Weber JR. et al. 1998. *J. Exp. Med.* 187:1157



For research use only. Not for diagnostic use. Not for resale. BioLegend will not be held responsible for patent infringement or other violations that may occur with the use of our products.



*These products may be covered by one or more Limited Use Label Licenses (see the BioLegend Catalog or our website, www.biolegend.com/ordering#license). BioLegend products may not be transferred to third parties, resold, modified for resale, or used to manufacture commercial products, reverse engineer functionally similar materials, or to provide a service to third parties without written approval of BioLegend. By use of these products you accept the terms and conditions of all applicable Limited Use Label Licenses. Unless otherwise indicated, these products are for research use only and are not intended for human or animal diagnostic, therapeutic or commercial use.