

Product Data Sheet

Purified Anti-ROR α

Catalog # / Size: 638801 / 25 μ l
638802 / 100 μ l

Clone: Poly6388

Isotype: Rabbit polyclonal

Immunogen: Synthetic peptide

Reactivity: Human, mouse

Preparation: The antibody was purified by affinity chromatography.

Formulation: This antibody is provided in phosphate-buffered solution, pH 7.2, containing 0.09% sodium azide and 50% glycerol.

Storage: Upon receipt, store frozen at -20° C.

Applications:

Applications: WB - *Quality tested*

Recommended Usage: Each lot of this antibody is quality control tested by Western blotting. Western blotting, suggested working dilution(s): Use 0.5 to 1.0 μ g/ml antibody dilution for each mini-gel. It is recommended that the reagent be titrated for optimal performance for each application.

Application References: 1. Wang Y, *et al.* 2010. J. Biol Chem. 21:15668. PubMed

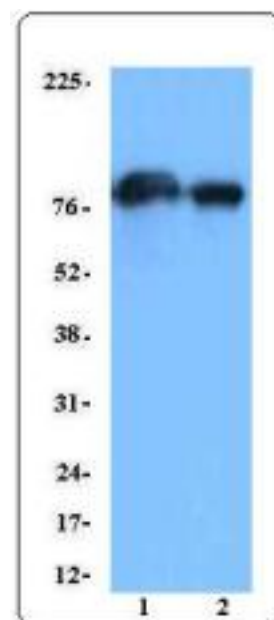
Description: Retinoid related orphan receptor alpha (ROR alpha) is a NR1 Thyroid Hormone Like Receptor. Three different subtypes ROR alpha, beta, and gamma have been discovered. ROR alpha plays a key role in the development of the cerebellum. Deletion of ROR alpha in mice causes severe impairment in the differentiation of cerebellar Purkinje neurons and results in the "staggerer" phenotype. ROR alpha has been suggested in the regulation of a number of other physiological processes, including bone formation. Recently, ROR alpha was reported to regulate lymphocyte development and mediate Th17 differentiation synergistically with ROR gamma.

Antigen References: 1. Dzhalalov I, *et al.* 2004. 173:2952
2. Yang XO, *et al.* 2008. *Immunity* 28:29.

Related Products: **Product**
Purified anti-human/mouse CD49f
Cell Staining Buffer
RBC Lysis Buffer (10X)

Clone
GoH3

Application
FC, IF, IHC, IP
FC, ICC, ICFC
FC, ICFC



Hela (1) and HepG2 (2) cell nuclear extract were resolved by electrophoresis, transferred to nitrocellulose, and probed with purified anti-ROR α antibody. Proteins were visualized using donkey anti-rabbit secondary conjugated to HRP and a chemiluminescence detection system.



For research use only. Not for diagnostic use. Not for resale. BioLegend will not be held responsible for patent infringement or other violations that may occur with the use of our products.



*These products may be covered by one or more Limited Use Label Licenses (see the BioLegend Catalog or our website, www.biollegend.com/ordering#license). BioLegend products may not be transferred to third parties, resold, modified for resale, or used to manufacture commercial products, reverse engineer functionally similar materials, or to provide a service to third parties without written approval of BioLegend. By use of these products you accept the terms and conditions of all applicable Limited Use Label Licenses. Unless otherwise indicated, these products are for research use only and are not intended for human or animal diagnostic, therapeutic or commercial use.