

# Product Data Sheet

## Biotin anti-human CD258 (LIGHT)

**Catalog # / Size:** 318704 / 100 µg

**Clone:** T5-39

**Isotype:** Mouse IgG2b, κ

**Immunogen:** recombinant human LIGHT (TL5) protein

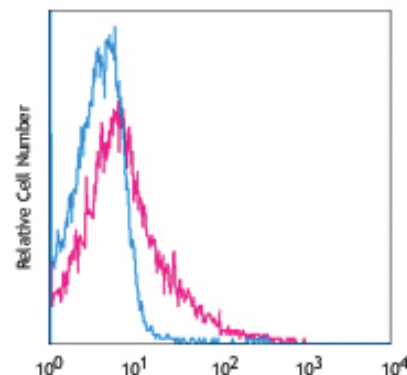
**Reactivity:** Human

**Preparation:** The antibody was purified by affinity chromatography, and conjugated with biotin under optimal conditions. The solution is free of unconjugated biotin.

**Formulation:** Phosphate-buffered solution, pH 7.2, containing 0.09% sodium azide.

**Concentration:** 0.5 mg/ml

**Storage:** The antibody solution should be stored undiluted at 4°C. **Do not freeze.**



*PMA/ionomycin-stimulated human peripheral blood lymphocytes (day-2) stained with biotinylated T5-39, followed by Sav-PE*

## Applications:

**Applications:** FC - *Quality tested*

**Recommended Usage:** Each lot of this antibody is quality control tested by immunofluorescent staining with flow cytometric analysis. For immunofluorescent staining, the suggested use of this reagent is ≤2.0 µg per million cells in 100 µl volume. It is recommended that the reagent be titrated for optimal performance for each application.

**Description:** The T5-39 antibody recognizes human LIGHT (CD258) also known as ligand for herpesvirus entry mediator, tumor necrosis factor receptor-like-2 ligand, TR2 ligand, and tumor necrosis factor ligand superfamily member 14 (TNFSF14). LIGHT is a type 2 transmembrane protein, and a member of the tumor necrosis factor ligand superfamily. LIGHT can be proteolytically cleaved and two isoforms have been shown to be produced by alternative splicing. The apparent molecular weight of LIGHT is approximately 30 kD. LIGHT expression has been observed in spleen, brain and kidney; expression is upregulated on activated T cells (particularly CD8<sup>+</sup> cells). LIGHT stimulates proliferation of T cells and inhibits growth of some tumor cells. This protein has been shown to play a role in intestinal inflammation and contribute to IgA nephropathy. LIGHT is a ligand for HVEM, and LTβR and has also been shown to bind DcR3 and modulate function. In addition, LIGHT has been shown to interact with other proteins including TRAF2, TRAF3, and DIABLO. The T5-39 antibody has been shown to be useful for flow cytometry and ELISA.

**Antigen References:**

1. Mauri DN, *et al.* 1998. *Immunity* 8:21.
2. Harrop JA, *et al.* 1998. *J. Biol. Chem.* 273:27548.
3. Morel Y, *et al.* 2000. *J. Immunol.* 165:4397.
4. Wang J, *et al.* 2004. *J. Clin. Invest.* 113:826.
5. Yu P, *et al.* 2004. *Nature Immunol.* 5:141.

### Related Products:

Product Biotin Mouse IgG2b, κ Isotype Ctrl

APC Streptavidin

PE Streptavidin

PE/Cy5 Streptavidin

PE/Cy7 Streptavidin

Cell Staining Buffer

Human TruStain FcX™ (Fc Receptor Blocking Solution)

### Clone

MPC-11

### Application

FC, ICFC

FC, ICFC

FC, ICFC

FC, ICFC

FC, ICFC

FC, ICC, ICFC

FC, ICC, ICFC



For research use only. Not for diagnostic use. Not for resale. BioLegend will not be held responsible for patent infringement or other violations that may occur with the use of our products.



\*These products may be covered by one or more Limited Use Label Licenses (see the BioLegend Catalog or our website, [www.biollegend.com/ordering#license](http://www.biollegend.com/ordering#license)). BioLegend products may not be transferred to third parties, resold, modified for resale, or used to manufacture commercial products, reverse engineer functionally similar materials, or to provide a service to third parties without written approval of BioLegend. By use of these products you accept the terms and conditions of all applicable Limited Use Label Licenses. Unless otherwise indicated, these products are for research use only and are not intended for human or animal diagnostic, therapeutic or commercial use.