

# Product Data Sheet

## PE anti-human CD352 (NTB-A)

**Catalog # / Size:** 317207 / 25 tests  
317208 / 100 tests

**Clone:** NT-7

**Isotype:** Mouse IgG1,  $\kappa$

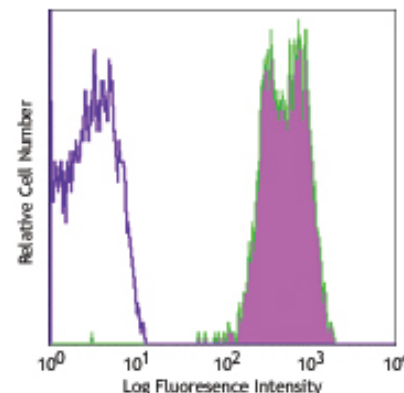
**Immunogen:** Recombinant extracellular domain of NTB-A

**Reactivity:** Human

**Preparation:** The antibody was purified by affinity chromatography, and conjugated with PE under optimal conditions. The solution is free of unconjugated PE and unconjugated antibody.

**Formulation:** Phosphate-buffered solution, pH 7.2, containing 0.09% sodium azide and 0.2% (w/v) BSA (origin USA).

**Storage:** The antibody solution should be stored undiluted at 4°C and protected from prolonged exposure to light. **Do not freeze.**



Human peripheral blood lymphocytes stained with NT-7 PE

## Applications:

**Applications:** FC - Quality tested

**Recommended Usage:** Each lot of this antibody is quality control tested by immunofluorescent staining with flow cytometric analysis. **Test size products are transitioning from 20  $\mu$ l to 5  $\mu$ l per test.** Please check your vial or your CoA to find the suggested use of this reagent per million cells in 100  $\mu$ l staining volume or per 100  $\mu$ l of whole blood. It is recommended that the reagent be titrated for optimal performance for each application. Read more at [www.biolegend.com/testsize](http://www.biolegend.com/testsize) regarding the test size change.

**Application Notes:** Additional reported applications (for the relevant formats) include: stimulation of NTB-A in a redirected lysis assay and blocking of NTB-A function<sup>3</sup>. The LEAF™ purified antibody (Endotoxin <0.1 EU/ $\mu$ g, Azide-Free, 0.2  $\mu$ m filtered) is recommended for functional assays (Cat. No. 317204).

**Application References:**

1. Messmer B, *et al.* 2006. *J. Immunol.* 176:4646. (FC)
2. Ward J, *et al.* 2007. *Blood* 110:1207. (FC) PubMed
3. Uzana R, *et al.* 2012. *J. Immunol.* 188:632. (Block) PubMed

**Description:** NTBA (NK-, T-, and B-cell Antigen) is a 60 kD type I transmembrane glycoprotein. It is a member of Ig superfamily belonging to CD2/CD150 subfamily, also known as SLAMF6 (SLAM family member 6), LY108, TCOM, or SF2000. This antigen is expressed on NK cells, T cells (upregulated upon activation), and B cells. NTBA is its own ligand. The homophilic interaction of NTBA is involved in the induction of NK cytotoxicity, CD28 independent T cell costimulation, triggering Th1 cytokines production, and regulation of B cell tolerance. It may play a role in the regulation of autoimmune diseases.

**Antigen References:**

1. Bottino C, *et al.* 2001. *J. Exp. Med.* 194:235.
2. Valdez PA, *et al.* 2004. *J. Bio. Chem.* 279:18662.
3. Flaig RM, *et al.* 2004. *J. Immunol.* 172:6524.
4. Falco M, *et al.* 2004. *Eur. J. Immunol.* 34:1663.
5. Kumar KR, *et al.* 2006. *Science* 312:1665.

### Related Products:

**Product**  
 Cell Staining Buffer  
 PE Mouse IgG1,  $\kappa$  Isotype Ctrl (FC)  
 Human TruStain FcX™ (Fc Receptor Blocking Solution)

### Clone

MOPC-21

### Application

FC, ICC, ICFC  
 FC  
 FC, ICC, ICFC



For research use only. Not for diagnostic use. Not for resale. BioLegend will not be held responsible for patent infringement or other violations that may occur with the use of our products.



\*These products may be covered by one or more Limited Use Label Licenses (see the BioLegend Catalog or our website, [www.biolegend.com/ordering#license](http://www.biolegend.com/ordering#license)). BioLegend products may not be transferred to third parties, resold, modified for resale, or used to manufacture commercial products, reverse engineer functionally similar materials, or to provide a service to third parties without written approval of BioLegend. By use of these products you accept the terms and conditions of all applicable Limited Use Label Licenses. Unless otherwise indicated, these products are for research use only and are not intended for human or animal diagnostic, therapeutic or commercial use.