

Alexa Fluor® 647 anti-human TCR Vβ5 related subset

Catalog # / Size: 316708 / 100 tests

Clone: MEM-262

Isotype: Mouse IgG2a, κ

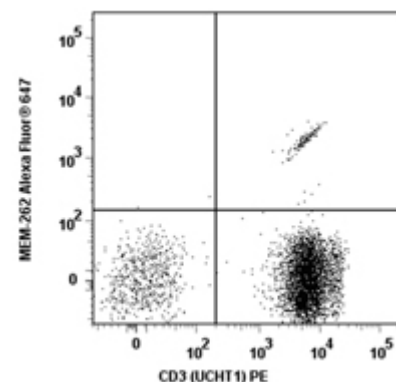
Immunogen: Human thymoma cell line HPB-ALL

Reactivity: Human

Preparation: The antibody was purified by affinity chromatography, and conjugated with Alexa Fluor® 647 under optimal conditions. The solution is free of unconjugated Alexa Fluor® 647.

Formulation: Phosphate-buffered solution, pH 7.2, containing 0.09% sodium azide and 0.2% (w/v) BSA (origin USA).

Storage: The antibody solution should be stored undiluted at 4°C and protected from prolonged exposure to light. **Do not freeze.**



Human peripheral blood lymphocytes stained with MEM-262 Alexa Fluor® 647 and CD3 (UCHT1) PE

Applications:

Applications: FC - Quality tested

Recommended Usage: Each lot of this antibody is quality control tested by immunofluorescent staining with flow cytometric analysis. For immunofluorescent staining, the suggested use of this reagent is 5 µl per million cells or 5 µl per 100 µl of whole blood. It is recommended that the reagent be titrated for optimal performance for each application.

* Alexa Fluor® 647 has a maximum emission of 668 nm when it is excited at 633nm / 635nm.

** Alexa Fluor® is a registered trademark of Molecular Probes, Inc. Alexa Fluor® dye antibody conjugates are sold under license from Molecular Probes, Inc. for research use only, except for use in combination with microarrays and high content screening, and are covered by pending and issued patents.

Application Notes: Additional reported applications (for the relevant formats) include: immunoprecipitation, Western blotting, and activation of T cells Vβ5 related subset.

Application References: 1. Pavlistova D, *et al.* 2003. *Immunol. Lett.* 88:105.

Description: The Vβ5 TCR is a variant of the TCR β chain. It belongs to Ig superfamily and is expressed by a subset of peripheral blood T cells and some T cell clones. TCR Vβ5 has been reported to recognize some staphylococcus bacterial superantigens. MEM-262 antibody reacts with a variant of the TCR β chain which is expressed on HPB-ALL cells (known expressing TCR Vβ5.3). But the subpopulation of peripheral blood T cells recognized by this antibody is reported larger than other anti-TCR Vβ5.3 antibodies.

Antigen References: 1. Pavlistova D, *et al.* 2003. *Immunol. Lett.* 88:105
2. Kappler T, *et al.* 1989. *Science* 244:811
3. Fernandez MM, *et al.* 2006. *Mol. Immunol.* 43:927

Related Products:

Product
Cell Staining Buffer
RBC Lysis Buffer (10X)
Alexa Fluor® 647 Mouse IgG2a, κ Isotype Ctrl
Human TruStain FcX™ (Fc Receptor Blocking Solution)

Clone

MOPC-173

Application

FC, ICC, ICFC
FC, ICFC
FC, ICFC
FC, ICC, ICFC



For research use only. Not for diagnostic use. Not for resale. BioLegend will not be held responsible for patent infringement or other violations that may occur with the use of our products.



*These products may be covered by one or more Limited Use Label Licenses (see the BioLegend Catalog or our website, www.biolegend.com/ordering#license). BioLegend products may not be transferred to third parties, resold, modified for resale, or used to manufacture commercial products, reverse engineer functionally similar materials, or to provide a service to third parties without written approval of BioLegend. By use of these products you accept the terms and conditions of all applicable Limited Use Label Licenses. Unless otherwise indicated, these products are for research use only and are not intended for human or animal diagnostic, therapeutic or commercial use.