

FITC anti-human Ig light chain λ

Catalog # / Size: 316606 / 100 tests

Clone: MHL-38

Isotype: Mouse IgG2a, κ

Immunogen: Human Ig cocktail

Reactivity: Human

Preparation: The antibody was purified by affinity chromatography, and conjugated with FITC under optimal conditions. The solution is free of unconjugated FITC.

Formulation: Phosphate-buffered solution, pH 7.2, containing 0.09% sodium azide and 0.2% (w/v) BSA (origin USA).

Storage: The antibody solution should be stored undiluted at 4°C and protected from prolonged exposure to light. **Do not freeze.**

Applications:

Applications: FC - *Quality tested*

Recommended Usage: Each lot of this antibody is quality control tested by immunofluorescent staining with flow cytometric analysis. **Test size products are transitioning from 20 μ l to 5 μ l per test.** Please check your vial or your CoA to find the suggested use of this reagent per million cells in 100 μ l staining volume or per 100 μ l of whole blood. It is recommended that the reagent be titrated for optimal performance for each application. Read more at www.biolegend.com/testsize regarding the test size change.

Description: The MHL-38 antibody reacts with both soluble and membrane human immunoglobulin light chain lambda (λ). It does not react with human immunoglobulin light chain kappa (κ) or heavy chain (μ). The MHL-38 antibody can be used as primary or secondary reagent for immunofluorescent staining or ELISA analysis.

Related Products:

Product
Cell Staining Buffer

FITC Mouse IgG2a, κ Isotype Ctrl (FC)

Human TruStain FcX™ (Fc Receptor

Blocking Solution)

Clone

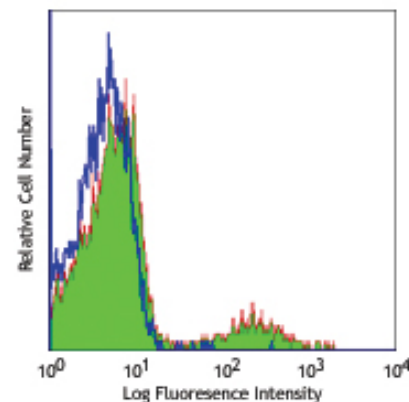
MOPC-173

Application

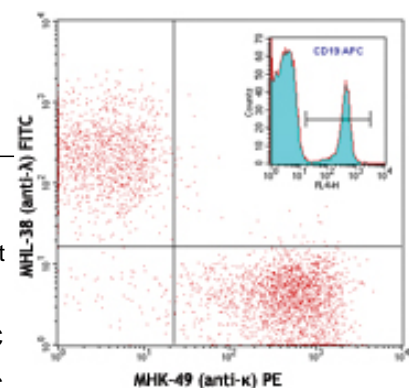
FC, ICC, ICFC

FC

FC, ICC, ICFC



Human peripheral blood lymphocytes stained with MHL-38 FITC



CD19⁺ human B-lymphocytes stained with MHL-38 (anti- λ) FITC and MHK-49 (anti- κ) PE



For research use only. Not for diagnostic use. Not for resale. BioLegend will not be held responsible for patent infringement or other violations that may occur with the use of our products.



*These products may be covered by one or more Limited Use Label Licenses (see the BioLegend Catalog or our website, www.biolegend.com/ordering#license). BioLegend products may not be transferred to third parties, resold, modified for resale, or used to manufacture commercial products, reverse engineer functionally similar materials, or to provide a service to third parties without written approval of BioLegend. By use of these products you accept the terms and conditions of all applicable Limited Use Label Licenses. Unless otherwise indicated, these products are for research use only and are not intended for human or animal diagnostic, therapeutic or commercial use.