

PE anti-human CD266 (Fn14, TWEAK R)

Catalog # / Size: 314004 / 100 µg

Clone: ITEM-1

Isotype: Mouse IgG1, κ

Immunogen: Human Fn14 transfected P815

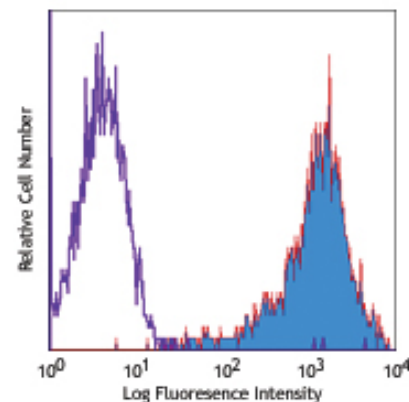
Reactivity: Human

Preparation: The antibody was purified by affinity chromatography, and conjugated with PE under optimal conditions. The solution is free of unconjugated PE and unconjugated antibody.

Formulation: Phosphate-buffered solution, pH 7.2, containing 0.09% sodium azide.

Concentration: 0.2 mg/ml

Storage: The antibody solution should be stored undiluted at 4°C and protected from prolonged exposure to light. **Do not freeze.**



Human Fn14 transfected cells stained with ITEM-1 PE

Applications:

Applications: FC - Quality tested

Recommended Usage: Each lot of this antibody is quality control tested by immunofluorescent staining with flow cytometric analysis. For immunofluorescent staining, the suggested use of this reagent is ≤0.5 µg per million cells in 100 µl volume. It is recommended that the reagent be titrated for optimal performance for each application.

Application Notes: Additional reported applications (for the relevant formats) include: Western blotting, immunohistochemistry of acetone-fixed frozen sections, and *in vitro* induction of caspase-dependent cell death^{1,2}. The LEAF™ purified antibody (Endotoxin <0.1 EU/µg, Azide-Free, 0.2 µm filtered) is recommended for functional assays (Cat. No. 314006).

Application References: 1. Nakayama M, *et al.* 2003. *J. Immunol.* 170:341. (Apop)
2. Felli N, *et al.* 2005. *J. Immunol.* 175:1464. (Apop)

Description: TWEAK receptor is also known as fibroblast growth factor inducible 14 kD protein (Fn14) or CD266. It is a 14 kD transmembrane protein that is expressed on a variety of tissue types. This receptor binds TWEAK and interacts with the cytoplasmic proteins TRAF1, 2, and 3. The TWEAK receptor is rapidly induced during liver regeneration and may play a role in hepatocyte growth. TWEAK receptor engagement can induce cell death and may play a role in inflammation. The ITEM-1 antibody is useful for flow cytometric analysis, induction of tumor cells apoptosis or necrotic cell death, enhancing endothelial cell proliferation, and immunohistochemistry on frozen tissues.

Antigen References: 1. Feng SL, *et al.* 2000. *Am. J. Pathol.* 156:1253.
2. Meighan-Mantha RL, *et al.* 1999. *J. Biol. Chem.* 274:33166.
3. Nakayama M, *et al.* 2003. *J. Immunol.* 170:341.
4. Lynch CN, *et al.* 1999. *J. Biol. Chem.* 274:8455.

Related Products:

Product
PE Mouse IgG1, κ Isotype Ctrl
Cell Staining Buffer
RBC Lysis Buffer (10X)
Human TruStain FcX™ (Fc Receptor Blocking Solution)

Clone
MOPC-21

Application
FC, ICFC
FC, ICC, ICFC
FC, ICFC
FC, ICC, ICFC



For research use only. Not for diagnostic use. Not for resale. BioLegend will not be held responsible for patent infringement or other violations that may occur with the use of our products.



*These products may be covered by one or more Limited Use Label Licenses (see the BioLegend Catalog or our website, www.biolegend.com/ordering#license). BioLegend products may not be transferred to third parties, resold, modified for resale, or used to manufacture commercial products, reverse engineer functionally similar materials, or to provide a service to third parties without written approval of BioLegend. By use of these products you accept the terms and conditions of all applicable Limited Use Label Licenses. Unless otherwise indicated, these products are for research use only and are not intended for human or animal diagnostic, therapeutic or commercial use.