

# Product Data Sheet

## Purified anti-human CD218a (IL-18R $\alpha$ )

**Catalog # / Size:** 313804 / 100  $\mu$ g

**Clone:** H44

**Isotype:** Mouse IgG1,  $\kappa$

**Immunogen:** Human NK cell line NK0 constitutively expressing IL-18 receptors

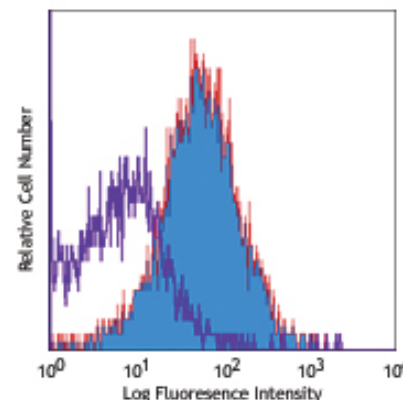
**Reactivity:** Human

**Preparation:** The antibody was purified by affinity chromatography.

**Formulation:** Phosphate-buffered solution, pH 7.2, containing 0.09% sodium azide.

**Concentration:** 0.5 mg/ml

**Storage:** The antibody solution should be stored undiluted at 4°C.



Human peripheral blood lymphocytes stained with purified H44, followed by biotinylated anti-mouse IgG and Sav-PE

## Applications:

**Applications:** FC - Quality tested  
IHC - Reported in the literature

**Recommended Usage:** Each lot of this antibody is quality control tested by immunofluorescent staining with flow cytometric analysis. For immunofluorescent staining, the suggested use of this reagent is  $\leq 2.0$   $\mu$ g per million cells in 100  $\mu$ l volume. It is recommended that the reagent be titrated for optimal performance for each application.

**Application Notes:** The H44 antibody is specific for IL-18 receptor  $\alpha$  chain. Additional reported applications (for the relevant formats) include: immunohistochemistry of acetone-fixed frozen sections<sup>1</sup>.

**Application References:** 1. Kitasato Y, *et al.* 2004. *Am. J. Respir. Cell Mol. Biol.* 31:619. (IHC)  
2. Vermot-Desroches C, *et al.* 2005. *Cell Immunol.* 236:101. (FC)

**Description:** IL-18 receptor is composed of an  $\alpha$  and a  $\beta$  subunit that combine to form a high affinity receptor for IL-18. IL-18 receptor  $\alpha$  chain, also known as CDw218a, is a 75-80 kD type I transmembrane protein. It is expressed on NK cells, neutrophils, endothelial cells, and subsets of T and B cells. The expression of CDw218a on lymphocytes is upregulated after activation. The interaction of IL-18 and IL-18 receptor has been reported to be implicated in promotion of Th1 cytokine production and atherogenesis.

**Antigen References:** 1. Torigoe K, *et al.* 1997. *J. Biol. Chem.* 272:25737.  
2. Gerdes N, *et al.* 2002. *J. Exp. Med.* 195:245.  
3. Airoidi I, *et al.* 2000. *J. Immunol.* 165:6880.

### Related Products:

**Product**  
Purified Mouse IgG1,  $\kappa$  Isotype Ctrl  
PE Goat anti-mouse IgG (minimal x-reactivity)  
Cell Staining Buffer

**Clone**  
MOPC-21  
Poly4053

### Application

FC, ICFC, ICC, IF, IHC, IP, WB  
FC  
FC, ICC, ICFC



For research use only. Not for diagnostic use. Not for resale. BioLegend will not be held responsible for patent infringement or other violations that may occur with the use of our products.



\*These products may be covered by one or more Limited Use Label Licenses (see the BioLegend Catalog or our website, [www.biollegend.com/ordering#license](http://www.biollegend.com/ordering#license)). BioLegend products may not be transferred to third parties, resold, modified for resale, or used to manufacture commercial products, reverse engineer functionally similar materials, or to provide a service to third parties without written approval of BioLegend. By use of these products you accept the terms and conditions of all applicable Limited Use Label Licenses. Unless otherwise indicated, these products are for research use only and are not intended for human or animal diagnostic, therapeutic or commercial use.