

# Product Data Sheet

## Pacific Blue™ anti-human HLA-A,B,C

**Catalog # / Size:** 311417 / 25 µg  
311418 / 100 µg

**Clone:** W6/32

**Isotype:** Mouse IgG2a, κ

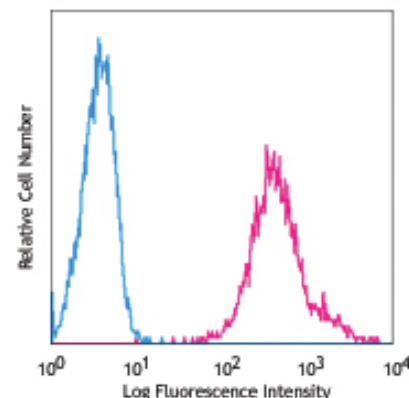
**Reactivity:** Human, **Cross-Reactivity:** Chimpanzee, Baboon, Cynomolgus, Rhesus, Cattle (Bovine, Cow), Cat (Feline)

**Preparation:** The antibody was purified by affinity chromatography, and conjugated with Pacific Blue™ under optimal conditions. The solution is free of unconjugated Pacific Blue™.

**Formulation:** Phosphate-buffered solution, pH 7.2, containing 0.09% sodium azide.

**Concentration:** 0.5 mg/ml

**Storage:** The antibody solution should be stored undiluted at 4°C and protected from prolonged exposure to light. **Do not freeze.**



Human peripheral blood lymphocytes stained with W6/32 Pacific Blue™

## Applications:

**Applications:** FC - Quality tested

**Recommended Usage:** Each lot of this antibody is quality control tested by immunofluorescent staining with flow cytometric analysis. For immunofluorescent staining, the suggested use of this reagent is  $\leq 1.0$  µg per  $10^6$  cells in 100 µl volume or 100 µl of whole blood. It is recommended that the reagent be titrated for optimal performance for each application.

\* Pacific Blue™ has a maximum emission of 455 nm when it is excited at 405 nm. Prior to using Pacific Blue™ conjugate for flow cytometric analysis, please verify your flow cytometer's capability of exciting and detecting the fluorochrome.

\*\* Pacific Blue™ is a registered trademark of Molecular Probes, Inc. Pacific Blue™ dye antibody conjugates are sold under license from Molecular Probes, Inc. for research use only, except for use in combination with microarrays and high content screening, and are covered by pending and issued patents.

**Application Notes:** Clone W6/32 recognizes a monomorphic epitope on the 45 kD polypeptide products of HLA-A, B, C<sup>18</sup>.

Additional reported applications (for the relevant formats) include: immunoprecipitation<sup>2</sup>, Western blotting (non-reducing)<sup>3</sup>, immunohistochemical staining of acetone-fixed frozen tissue sections<sup>4,5</sup>, blocking<sup>6,7</sup>, inhibition of NK cell-mediated lysis<sup>10</sup>, and activation<sup>8,9</sup>. Clone W6/32 has been reported not to be suitable for immunohistochemistry on paraffin sections<sup>17</sup>. The LEAF™ purified antibody (Endotoxin <0.1 EU/µg, Azide-Free, 0.2 µm filtered) is recommended for functional assays (Cat. No. 311412). For highly sensitive assays, we recommend Ultra-LEAF™ purified antibody (Cat. No. 311428) with a lower endotoxin limit than standard LEAF™ purified antibodies (Endotoxin <0.01 EU/µg).

- Application References:**
1. Darrow TL, *et al.* 1989. *J. Immunol.* 142:3329.
  2. Stern P, *et al.* 1987. *J. Immunol.* 138:1088.
  3. Tran TM, *et al.* 2001. *Immunogenetics* 53:440.
  4. Barbatis C, *et al.* 1981. *Gut* 22:985.
  5. Ayyoub M, *et al.* 2004. *Cancer Immunity* 4:7.
  6. DeFelice M, *et al.* 1990. *Cell. Immunol.* 126:420.
  7. Fayen J, *et al.* 1998. *Int. Immunol.* 10:1347.
  8. Turco MC, *et al.* 1988. *J. Immunol.* 141:2275.
  9. Geppert TD, *et al.* 1989. *J. Immunol.* 142:3763.
  10. Wooden SL, *et al.* 2005. *J. Immunol.* 175:1383.
  11. Nagano M, *et al.* 2007. *Blood* 110:151.
  12. McLoughlin RM, *et al.* 2008. *J. Immunol.* 181:1323. PubMed
  13. Takahara M, *et al.* 2008. *J. Leukoc. Biol.* 83:742. PubMed
  14. Lunemann A, *et al.* 2008. *J. Immunol.* 181:6170. PubMed
  15. Laing BJ, *et al.* 2010. *J. Thorac Cardiovasc Surg.* 139:1402. PubMed
  16. Yoshino N, *et al.* 2000. *Exp. Anim. (Tokyo)* 49:97. (FC)
  17. Vambutas A, *et al.* 2000. *Clin. Diagn. Lab. Immun.* 7:79.
  18. Coppieters KT, *et al.* 2012. *J. Exp. Med.* 209:51. (epitope)

**Description:** MHC class I antigens associated with β2-microglobulin are expressed by all human nucleated cells. MHC class I molecules are involved in presentation of antigens to CD8<sup>+</sup> T cells. They play an important role in cell-mediated immune responses and tumor surveillance.

**Antigen References:** 1. Barclay AN, *et al.* Eds. 1993. *The Leukocyte Antigen FactsBook*. Academic Press Inc. San Diego.



For research use only. Not for diagnostic use. Not for resale. BioLegend will not be held responsible for patent infringement or other violations that may occur with the use of our products.



\*These products may be covered by one or more Limited Use Label Licenses (see the BioLegend Catalog or our website, [www.biollegend.com/ordering#license](http://www.biollegend.com/ordering#license)). BioLegend products may not be transferred to third parties, resold, modified for resale, or used to manufacture commercial products, reverse engineer functionally similar materials, or to provide a service to third parties without written approval of BioLegend. By use of these products you accept the terms and conditions of all applicable Limited Use Label Licenses. Unless otherwise indicated, these products are for research use only and are not intended for human or animal diagnostic, therapeutic or commercial use.

Related Products:Product	Clone	Application
Cell Staining Buffer		FC, ICC, ICFC
RBC Lysis Buffer (10X)		FC, ICFC
Pacific Blue™ Mouse IgG2a, κ Isotype Ctrl	MOPC-173	FC, ICFC
Human TruStain FcX™ (Fc Receptor Blocking Solution)		FC, ICC, ICFC



For research use only. Not for diagnostic use. Not for resale. BioLegend will not be held responsible for patent infringement or other violations that may occur with the use of our products.



\*These products may be covered by one or more Limited Use Label Licenses (see the BioLegend Catalog or our website, [www.biolegend.com/ordering#license](http://www.biolegend.com/ordering#license)). BioLegend products may not be transferred to third parties, resold, modified for resale, or used to manufacture commercial products, reverse engineer functionally similar materials, or to provide a service to third parties without written approval of BioLegend. By use of these products you accept the terms and conditions of all applicable Limited Use Label Licenses. Unless otherwise indicated, these products are for research use only and are not intended for human or animal diagnostic, therapeutic or commercial use.

BioLegend Inc., 9727 Pacific Heights Blvd, San Diego, CA 92121 [www.biolegend.com](http://www.biolegend.com)  
Toll-Free Phone: 1-877-Bio-Legend (246-5343) Phone: (858) 768-5800 Fax: (877) 455-9587