

Product Data Sheet

FITC anti-human CD282 (TLR2)

Catalog # / Size: 309705 / 25 tests
309706 / 100 tests

Clone: TL2.1

Isotype: Mouse IgG2a, κ

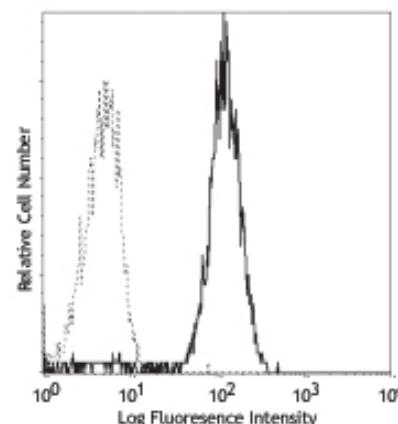
Immunogen: Human TLR2-transfected CHO cells

Reactivity: Human

Preparation: The antibody was purified by affinity chromatography, and conjugated with FITC under optimal conditions. The solution is free of unconjugated FITC.

Formulation: Phosphate-buffered solution, pH 7.2, containing 0.09% sodium azide and 0.2% (w/v) BSA (origin USA).

Storage: The antibody solution should be stored undiluted at 4°C and protected from prolonged exposure to light. **Do not freeze.**



Human peripheral blood monocytes
stained with TL2.1 FITC

Applications:

Applications: FC - Quality tested

Recommended Usage: Each lot of this antibody is quality control tested by immunofluorescent staining with flow cytometric analysis. **Test size products are transitioning from 20 μ l to 5 μ l per test.** Please check your vial or your CoA to find the suggested use of this reagent per million cells in 100 μ l staining volume or per 100 μ l of whole blood. It is recommended that the reagent be titrated for optimal performance for each application. Read more at www.biolegend.com/testsize regarding the test size change.

Application Notes: The TL2.1 antibody is useful for blocking studies. It has been reported to block TLR2 agonist-induced cellular activation. Additional reported applications (for the relevant formats) include: inhibition of PGP activity and blocking of cytokine production^{1,3,7}, immunoprecipitation¹, immunohistochemistry of 4% paraformaldehyde-fixed frozen sections² and immunohistochemistry of HOPE-fixed (HEPES-glutamic acid buffer-mediated organic solvent protection effect) paraffin-embedded sections⁴, and Western blotting². The LEAF™ purified antibody (Endotoxin <0.1 EU/ μ g, Azide-Free, 0.2 μ m filtered) is recommended for functional assays (Cat. No. 309709). For highly sensitive assays, we recommend Ultra-LEAF™ purified antibody (Cat. No. 309716) with a lower endotoxin limit than standard LEAF™ purified antibodies (Endotoxin <0.01 EU/ μ g).

Application References:

1. Flo T, *et al.* 2000. *J. Immunol.* 164:2064.
2. Faure E, *et al.* 2001. *J. Immunol.* 166:2018.
3. Sugawara S, *et al.* 2001. *Infect. Immun.* 69:4951.
4. Droemann D, *et al.* 2003. *Histochem. Cell Biol.* 119:103.
5. Chavakis E, *et al.* 2007. *Circ. Res.* 100:204.PubMed
6. Fiala M, *et al.* 2007. *Proc. Natl. Acad. Sci. USA* 104:1073/P. Natl. Acad. Sci. USA.0701267104.
7. Goo SY, *et al.* 2007. *J. Biol. Chem.* doi:10.1074/jbc.M701876200.PubMed
8. Weiss DJ, *et al.* 2008. *J. Leukoc. Biol.* 83:48. PubMed
9. Harris, KM., *et al.* 2011. *J. Leukoc Biol.* 90:727. PubMed.

Description: Toll-like receptors are type I transmembrane signaling receptors which are critical for the innate host defense to pathogens. Toll-like receptor 2 (TLR2), known as CD282, has been identified as a receptor that is central to the innate immune system's response to lipoproteins of Gram-negative bacteria and Gram-positive bacteria, as well as a receptor for peptidoglycan and lipoteichoic acid and other bacterial cell membrane products.

Antigen References:

1. Lien E, *et al.* 1999. *J. Biol. Chem.* 274:33419.
2. Lien E, *et al.* 2001. *J. Biol. Chem.* 276:1873.
3. Sabroe I, *et al.* 2002. *J. Immunol.* 168:4701

Related Products:	Product	Clone	Application
	FITC anti-human CD14	M5E2	FC
	FITC Mouse IgG2a, κ Isotype Ctrl	MOPC-173	FC, ICFC
	Cell Staining Buffer		FC, ICC, ICFC
	RBC Lysis Buffer (10X)		FC, ICFC
	PE anti-human CD284 (TLR4)	HTA125	FC
	PE anti-human CD180 (RP105)	MHR73-11	FC, ICFC
	Human TruStain FcX™ (Fc Receptor Blocking Solution)		FC, ICC, ICFC



For research use only. Not for diagnostic use. Not for resale. BioLegend will not be held responsible for patent infringement or other violations that may occur with the use of our products.



*These products may be covered by one or more Limited Use Label Licenses (see the BioLegend Catalog or our website, www.biolegend.com/ordering#license). BioLegend products may not be transferred to third parties, resold, modified for resale, or used to manufacture commercial products, reverse engineer functionally similar materials, or to provide a service to third parties without written approval of BioLegend. By use of these products you accept the terms and conditions of all applicable Limited Use Label Licenses. Unless otherwise indicated, these products are for research use only and are not intended for human or animal diagnostic, therapeutic or commercial use.