

PE anti-human CD210 (IL-10 R)

Catalog # / Size: 308803 / 25 tests
308804 / 100 tests

Clone: 3F9

Isotype: Rat IgG2a, κ

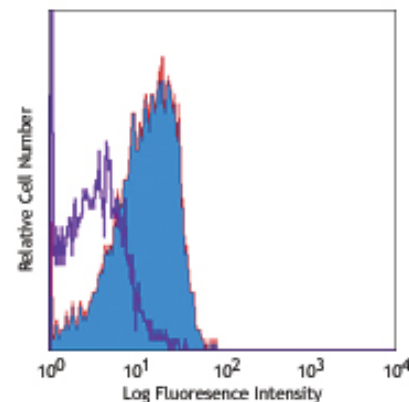
Workshop Number: VII 70502

Reactivity: Human, **Cross-Reactivity:** Cynomolgus, Rhesus

Preparation: The antibody was purified by affinity chromatography, and conjugated with PE under optimal conditions. The solution is free of unconjugated PE and unconjugated antibody.

Formulation: Phosphate-buffered solution, pH 7.2, containing 0.09% sodium azide and 0.2% (w/v) BSA (origin USA).

Storage: The antibody solution should be stored undiluted at 4°C and protected from prolonged exposure to light. **Do not freeze.**



Human peripheral blood lymphocytes stained with 3F9 PE

Applications:

Applications: FC - Quality tested

Recommended Usage: Each lot of this antibody is quality control tested by immunofluorescent staining with flow cytometric analysis. **Test size products are transitioning from 20 μ l to 5 μ l per test.** Please check your vial or your CoA to find the suggested use of this reagent per million cells in 100 μ l staining volume or per 100 μ l of whole blood. It is recommended that the reagent be titrated for optimal performance for each application. Read more at www.biolegend.com/testsize regarding the test size change.

Application Notes: Additional reported applications (for the relevant formats) include: immunoprecipitation¹, *in vitro* blocking¹⁻³ of hIL-10 binding to IL-10R. For most successful immunofluorescent staining results, it may be important to maximize signal over background by using a relatively bright fluorochrome-antibody conjugate (Cat. No. 308804) or by using a high sensitivity, three-layer staining technique (e.g., including a biotinylated anti-rat IgG second step (Cat. No. 405402), followed by SA-PE (Cat. No. 405204)). The LEAF™ purified antibody (Endotoxin <0.1 EU/ μ g, Azide-Free, 0.2 μ m filtered) is recommended for functional assays (Cat. No. 308806). For highly sensitive assays, we recommend Ultra-LEAF™ purified antibody (Cat. No. 308810) with a lower endotoxin limit than standard LEAF™ purified antibodies (Endotoxin <0.01 EU/ μ g).

- Application References:**
- Liu Y, *et al.* 1997. *J. Immunol.* 158:604.
 - Levings MK, *et al.* 2005. *Blood* 105:1162.
 - Goodier MR, *et al.* 2000. *J. Immunol.* 165:139.
 - Huang YH, *et al.* 2009. *J. Leukoc. Biol.* 86:273. PubMed
 - Yoshino N, *et al.* 2000. *Exp. Anim. (Tokyo)* 49:97. (FC)
 - Liu BS, *et al.* 2011. *J. Leukoc Biol.* 89:981. PubMed.
 - Joffe M, *et al.* 2012. *Int Immunol.* 24:447. PubMed.
 - Zizzo G, *et al.* 2012. *J. Immunol.* 189:3508. PubMed.

Description: CD210, also known as the IL-10 receptor, is a 90-110 kD protein expressed on T cells, B cells, NK cells, monocytes and macrophages. CD210 belongs to the class II cytokine receptor family which includes the IFN- γ receptor (CDw119), the IFN- α/β receptor (CD118) and tissue factor (CD142). The IL-10 receptor is involved in signal transduction by inducing phosphorylation of STAT1a and STAT3 and by inducing activation of Jak1 and Tyk.

- Antigen References:**
- Kotenko S. 2002. *Cytokine Growth Factor Rev.* 13:223.
 - Trinchieri G. 2003. *Nat. Rev. Immunol.* 3:133.

Related Products:

Product	Clone	Application
Cell Staining Buffer		FC, ICC, ICFC
RBC Lysis Buffer (10X)		FC, ICFC
PE Rat IgG2a, κ Isotype Ctrl	RTK2758	FC, ICFC
Human TruStain FcX™ (Fc Receptor Blocking Solution)		FC, ICC, ICFC



For research use only. Not for diagnostic use. Not for resale. BioLegend will not be held responsible for patent infringement or other violations that may occur with the use of our products.



*These products may be covered by one or more Limited Use Label Licenses (see the BioLegend Catalog or our website, www.biolegend.com/ordering#license). BioLegend products may not be transferred to third parties, resold, modified for resale, or used to manufacture commercial products, reverse engineer functionally similar materials, or to provide a service to third parties without written approval of BioLegend. By use of these products you accept the terms and conditions of all applicable Limited Use Label Licenses. Unless otherwise indicated, these products are for research use only and are not intended for human or animal diagnostic, therapeutic or commercial use.