

Product Data Sheet

PE anti-human IFN- γ R β chain

Catalog # / Size: 308504 / 100 tests

Clone: 2HUB-159

Isotype: Hamster IgG

Workshop Number: VI C-111

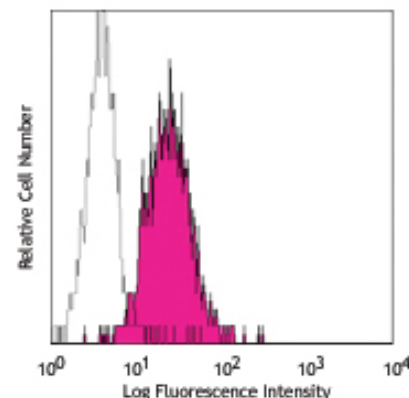
Immunogen: soluble extracellular domains of the human IFN- γ R β chain

Reactivity: Human

Preparation: The antibody was purified by affinity chromatography, and conjugated with PE under optimal conditions. The solution is free of unconjugated PE and unconjugated antibody.

Formulation: Phosphate-buffered solution, pH 7.2, containing 0.09% sodium azide and 0.2% (w/v) BSA (origin USA).

Storage: The antibody solution should be stored undiluted at 4°C and protected from prolonged exposure to light. **Do not freeze.**



Human IFN- γ R β transfected L929 cells stained with 2HUB-159 PE

Applications:

Applications: FC - Quality tested

Recommended Usage: Each lot of this antibody is quality control tested by immunofluorescent staining with flow cytometric analysis. **Test size products are transitioning from 20 μ l to 5 μ l per test.** Please check your vial or your CoA to find the suggested use of this reagent per million cells in 100 μ l staining volume or per 100 μ l of whole blood. It is recommended that the reagent be titrated for optimal performance for each application. Read more at www.biolegend.com/testsize regarding the test size change.

Application Notes: Additional reported applications (for the relevant formats) include: Western blotting^{2,3} and immunoprecipitation^{2,3}. For most successful immunofluorescent staining results, it may be important to maximize signal over background by using a relatively bright fluorochrome-antibody conjugate (Cat. No. 308504) or by using a high sensitivity, three-layer staining technique (e.g., including a biotinylated anti-Armenian hamster IgG second step (Cat. No. 405501), followed by SAV-PE (Cat. No. 405204)). The LEAF™ purified antibody (Endotoxin <0.1 EU/ μ g, Azide-Free, 0.2 μ m filtered) is recommended for functional assays (Cat. No. 308506).

Application References:

1. Kishimoto T, *et al.* Eds. 1997. Leucocyte Typing VI. Garland Publishing Inc. London.
2. Bach EA, *et al.* 1996. *Mol. Cell. Biol.* 16:3214. (IP WB)
3. Rosenzweig SD, *et al.* 2004. *J. Immunol.* 173:4000. (IP WB)
4. Joseph TD, *et al.* 2001. *J. Biol. Chem.* 276:47136.
5. Choi JC, *et al.* 2007. *J. Immunol.* 178:1598.

Description: IFN- γ R β chain is a 65 kD type I transmembrane protein, also known as accessory factor (AF-1) or IFN- γ RIL. IFN- γ receptor is composed of an IFN- γ R α chain (CDw119) and a β chain. They are members of the class II cytokine receptor family. The α chain is required for ligand binding and ligand trafficking to the cells and also plays some role in signal transduction. The β chain is critical for delivering IFN- γ mediated pleiotropic signals. IFN- γ R β chain is broadly expressed on a variety of cells at low levels and upregulated on some activated B cells.

Antigen References:

1. Basler C, *et al.* 2002. *Int. Rev. Immunol.* 21:305.
2. Brierley M, *et al.* 2002. *J. Interferon Cytokine Res.* 22:835.

Related Products:

Product	Clone	Application
Cell Staining Buffer		FC, ICC, ICFC
RBC Lysis Buffer (10X)		FC, ICFC
PE anti-human CD119 (IFN- γ R α chain)	GIR-94	FC
PE Armenian Hamster IgG Isotype Ctrl	HTK888	FC, ICFC
PE anti-human CD119 (IFN- γ R α chain)	GIR-208	FC
Human TruStain FcX™ (Fc Receptor Blocking Solution)		FC, ICC, ICFC



For research use only. Not for diagnostic use. Not for resale. BioLegend will not be held responsible for patent infringement or other violations that may occur with the use of our products.



*These products may be covered by one or more Limited Use Label Licenses (see the BioLegend Catalog or our website, www.biolegend.com/ordering#license). BioLegend products may not be transferred to third parties, resold, modified for resale, or used to manufacture commercial products, reverse engineer functionally similar materials, or to provide a service to third parties without written approval of BioLegend. By use of these products you accept the terms and conditions of all applicable Limited Use Label Licenses. Unless otherwise indicated, these products are for research use only and are not intended for human or animal diagnostic, therapeutic or commercial use.