

Product Data Sheet

LEAF™ Purified anti-human CD255 (TWEAK)

Catalog # / Size: 308307 / 100 µg

Clone: CARL-1

Isotype: Mouse IgG3, κ

Immunogen: hTWEAK/2PK-3 transfectant cells

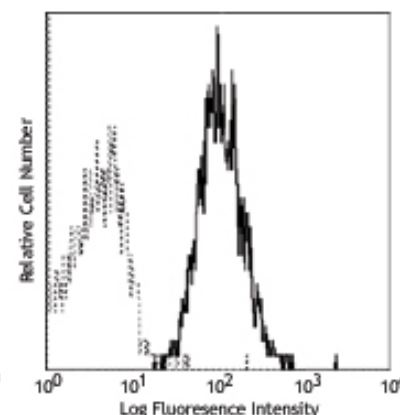
Reactivity: Human

Preparation: The LEAF™ (Low Endotoxin, Azide-Free) antibody was purified by affinity chromatography.

Formulation: 0.2 µm filtered in phosphate-buffered solution, pH 7.2, containing no preservative. Endotoxin level is <0.1 EU/µg of the protein (<0.01 ng/µg of the protein) as determined by the LAL test.

Concentration: 1.0 mg/ml

Storage: The antibody solution should be stored undiluted at 4°C. This LEAF™ solution contains no preservative; handle under aseptic conditions.



Human TWEAK transfected cells
stained with Carl-1 PE

Applications:

Applications: FC - *Quality tested*
Neut, IHC - *Reported in the literature*

Recommended Usage: Each lot of this antibody is quality control tested by sandwich ELISA. For ELISA capture applications, a concentration range of 1-4 µg/ml is recommended. It is recommended that the reagent be titrated for optimal performance for each application.

Application Notes: **Flow Cytometry:** For most successful immunofluorescent staining results, it may be important to maximize signal over background by using a relatively bright fluorochrome-antibody conjugate (Cat. No. 308306) or by using a high sensitivity, three-layer staining technique (e.g., including a biotinylated antibody (Cat. No. 308304) or biotinylated anti-mouse IgG second step (Cat. No. 405303), followed by SAV-PE (Cat. No. 405204)).
ELISA Detection: The biotinylated CARL-1 antibody is useful as the detection antibody in sandwich ELISA for measuring human TWEAK protein, in combination with CARL-2 antibody (Cat. No. 308402) used as ELISA capture.
Neutralization^{1,2}: In a dose-dependent manner, CARL-1 is more effective than CARL-2¹. The LEAF™ purified antibody (Endotoxin <0.1 EU/µg, Azide-Free, 0.2 µm filtered) is recommended for functional assays (Cat. No. 308307).

Application References: 1. Nakayama, M., *et al.* 2000. *J. Exp. Med.* 192:1373. (Neut)
2. Nakayama, M., *et al.* 2003. *J. Immunol.* 170:341. (Neut)

Description: TNF-like weak inducer of apoptosis (TWEAK) is a type II transmembrane TNF superfamily member with strong homology to TNF in its extracellular portion, though less potent in inducing apoptosis. It has been clustered as CD255. TWEAK transcript is expressed broadly in many adult and fetal tissues; however, the staining of human peripheral blood mononuclear cells with TWEAK-specific antibodies shows a more restricted pattern. TWEAK is expressed as membrane-bound and secreted forms. Interaction of TWEAK with its receptors (DR3, Fn14) promotes secretion of IL-8, activation of NF-κB, proliferation of endothelial cells, and apoptosis in a number of human cell lines.

Antigen References: 1. Fitzgerald, K., *et al.* Eds. 2001. *The Cytokine FactsBook*. Academic Press, San Diego.
2. Chicheportiche, Y., *et al.* 1997. *J. Biol. Chem.* 272:32401.
3. Kaplan, M., *et al.* 2000. *J. Immunol.* 164:2897.
4. Saas, P., *et al.* 2000. *Glia* 32:102.
5. Wiley, S., *et al.* 2001. *Immunity* 15:837.

Related Products:

Product
LEAF™ Purified anti-human CD255 (TWEAK)
Recombinant Human CD255 (TWEAK)
LEAF™ Purified Mouse IgG3, κ Isotype Ctrl

Clone
CARL-2
MG3-35

Application
ELISA Capture, FC, Neut
BA, ELISA
FC, ICFC, IP, WB, ICC, IF, FA



For research use only. Not for diagnostic use. Not for resale. BioLegend will not be held responsible for patent infringement or other violations that may occur with the use of our products.



*These products may be covered by one or more Limited Use Label Licenses (see the BioLegend Catalog or our website, www.biolegend.com/ordering#license). BioLegend products may not be transferred to third parties, resold, modified for resale, or used to manufacture commercial products, reverse engineer functionally similar materials, or to provide a service to third parties without written approval of BioLegend. By use of these products you accept the terms and conditions of all applicable Limited Use Label Licenses. Unless otherwise indicated, these products are for research use only and are not intended for human or animal diagnostic, therapeutic or commercial use.