

## PE/Cy7 anti-human HLA-DR

**Catalog # / Size:** 307615 / 25 tests  
307616 / 100 tests

**Clone:** L243

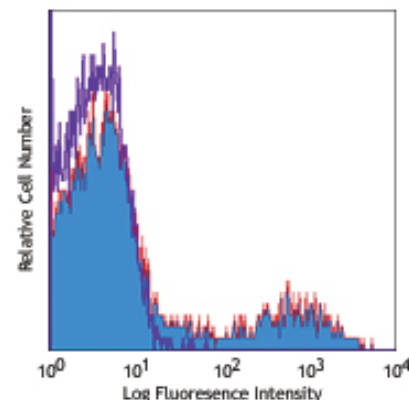
**Isotype:** Mouse IgG2a,  $\kappa$

**Reactivity:** Human, **Cross-Reactivity:** African Green, Baboon, Chimpanzee, Common Marmoset, Cotton-topped Tamarin, Cynomolgus, Pigtailed Macaque, Rhesus, Squirrel Monkey, Dog (Canine)<sup>17, 18</sup>

**Preparation:** The antibody was purified by affinity chromatography, and conjugated with PE/Cy7 under optimal conditions. The solution is free of unconjugated PE/Cy7 and unconjugated antibody.

**Formulation:** Phosphate-buffered solution, pH 7.2, containing 0.09% sodium azide and 0.2% (w/v) BSA (origin USA).

**Storage:** The antibody solution should be stored undiluted at 4°C and protected from prolonged exposure to light. **Do not freeze.**



Human peripheral blood lymphocytes stained with L243 PE/Cy7

## Applications:

**Applications:** FC - Quality tested

**Recommended Usage:** Each lot of this antibody is quality control tested by immunofluorescent staining with flow cytometric analysis. **Test size products are transitioning from 20  $\mu$ l to 5  $\mu$ l per test.** Please check your vial or your CoA to find the suggested use of this reagent per million cells in 100  $\mu$ l staining volume or per 100  $\mu$ l of whole blood. It is recommended that the reagent be titrated for optimal performance for each application. Read more at [www.biolegend.com/testsize](http://www.biolegend.com/testsize) regarding the test size change.

**Application Notes:** The L243 monoclonal antibody reacts with the HLA-DR antigen, a member of MHC class II molecules. It does not cross react with HLA-DP and HLA-DQ. Additional reported applications (for the relevant formats) include: immunoprecipitation<sup>8</sup>, Western blotting<sup>8</sup>, *in vitro* blocking of mixed lymphocyte reactions<sup>7,9,10</sup>, and immunohistochemical staining of acetone-fixed frozen sections<sup>4,5</sup>. The LEAF™ purified antibody (Endotoxin <0.1 EU/ $\mu$ g, Azide-Free, 0.2  $\mu$ m filtered) is recommended for functional assays (Cat. No. 307612). For highly sensitive assays, we recommend Ultra-LEAF™ purified antibody (Cat. No. 307648) with a lower endotoxin limit than standard LEAF™ purified antibodies (Endotoxin <0.01 EU/ $\mu$ g).

Cy3, Cy5, Cy5.5 and Cy7 are subject to proprietary rights of GE Healthcare Bio-Sciences Corp. and Carnegie Mellon University and made and sold under license from GE Healthcare Bio-Sciences Corp. Sale of this product is licensed for research use only.

- Application References:**
1. Brodsky F. 1984. *Immunogenetics* 19:179.
  2. Robbins P, et al. 1987. *Human Immunol.* 18:301.
  3. Stites D, et al. 1986. *Clin. Immunol. Immunopathol.* 38:161.
  4. Warnke R, et al. 1980. *J. Histochem. Cytochem.* 28:771. (IHC)
  5. Engleman E, et al. 1981. *P. Natl. Acad. Sci. USA* 78:1791. (IHC)
  6. Zipf T, et al. 1981. *Cancer Res.* 41:4786.
  7. Goodier M, et al. 2000. *J. Immunol.* 165:139. (Block)
  8. Esser M, et al. 2001. *J. Virol.* 75:6173. (IP, WB)
  9. Kalka-Moll WM, et al. 2002. *J. Immunol.* 169:6149. (Block)
  10. Wang RF, et al. 1999. *Science* 284:1351. (Block)
  11. Zaba LC, et al. 2007. *J. Exp. Med.* 204:3183. PubMed
  12. Fujita H, et al. 2009. *P. Natl. Acad. Sci. USA* 106:21795. PubMed
  13. Charles N, et al. 2010. *Nat. Med.* 16:701. (FC) PubMed
  14. Goncalves RM, et al. 2010. *Infect. Immun.* 78:4763. PubMed
  15. Yoshino N, et al. 2000. *Exp. Anim. (Tokyo)* 49:97. (FC)
  16. Kim WK, et al. 2006. *Am. J. Pathol.* 168:822. (FC)
  17. Stein R, et al. 2011. *Leuk. Lymphoma* 52:273.
  18. Galkowska H, et al. 1996. *Vet. Immunol. Immunopathol.* 53:329.

**Description:** HLA-DR is a heterodimeric cell surface glycoprotein comprised of a 36 kD  $\alpha$  (heavy) chain and a 27 kD  $\beta$  (light) chain. It is expressed on B cells, activated T cells, monocytes/macrophages, dendritic cells, and other non-professional APCs. In conjunction with the CD3/TCR complex and CD4 molecules, HLA-DR is critical for efficient peptide presentation to CD4<sup>+</sup> T cells.

- Antigen References:**
1. Levacher M, et al. 1990. *Clin. Exp. Immunol.* 81:177.
  2. Terstappen L, et al. 1990. *J. Leukocyte Biol.* 48:138.
  3. Edwards JA, et al. 1986. *J. Immunol.* 137:490.



For research use only. Not for diagnostic use. Not for resale. BioLegend will not be held responsible for patent infringement or other violations that may occur with the use of our products.



\*These products may be covered by one or more Limited Use Label Licenses (see the BioLegend Catalog or our website, [www.biolegend.com/ordering#license](http://www.biolegend.com/ordering#license)). BioLegend products may not be transferred to third parties, resold, modified for resale, or used to manufacture commercial products, reverse engineer functionally similar materials, or to provide a service to third parties without written approval of BioLegend. By use of these products you accept the terms and conditions of all applicable Limited Use Label Licenses. Unless otherwise indicated, these products are for research use only and are not intended for human or animal diagnostic, therapeutic or commercial use.

4. van Es A, *et al.* 1984. *Transplantation* 37:65.
5. O'Doherty U, *et al.* 1994. *Immunology* 82:487.
6. Thomas R, *et al.* 1994. *J. Immunol.* 153:4016.
7. Grouard G, *et al.* 1996. *Nature* 384:364.

<b>Related Products:</b>	<b>Product</b>	<b>Clone</b>	<b>Application</b>
	Cell Staining Buffer		FC, ICC, ICFC
	RBC Lysis Buffer (10X)		FC, ICFC
	PE/Cy7 Mouse IgG2a, $\kappa$ Isotype Ctrl	MOPC-173	FC, ICFC
	Human TruStain FcX™ (Fc Receptor Blocking Solution)		FC, ICC, ICFC



For research use only. Not for diagnostic use. Not for resale. BioLegend will not be held responsible for patent infringement or other violations that may occur with the use of our products.



\*These products may be covered by one or more Limited Use Label Licenses (see the BioLegend Catalog or our website, [www.biolegend.com/ordering#license](http://www.biolegend.com/ordering#license)). BioLegend products may not be transferred to third parties, resold, modified for resale, or used to manufacture commercial products, reverse engineer functionally similar materials, or to provide a service to third parties without written approval of BioLegend. By use of these products you accept the terms and conditions of all applicable Limited Use Label Licenses. Unless otherwise indicated, these products are for research use only and are not intended for human or animal diagnostic, therapeutic or commercial use.