

APC anti-human TCR α/β

Catalog # / Size: 306717 / 25 tests
306718 / 100 tests

Clone: IP26

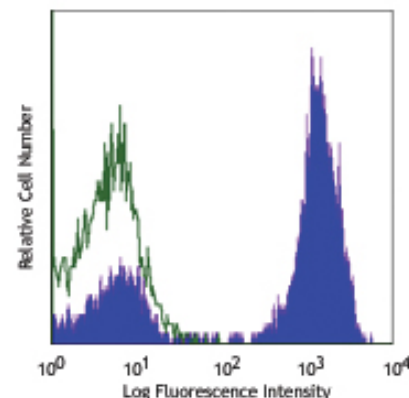
Isotype: Mouse IgG1, κ

Reactivity: Human

Preparation: The antibody was purified by affinity chromatography and conjugated with APC under optimal conditions. The solution is free of unconjugated APC and unconjugated antibody.

Formulation: Phosphate-buffered solution, pH 7.2, containing 0.09% sodium azide and 0.2% (w/v) BSA (origin USA).

Storage: The antibody solution should be stored undiluted at 4°C and protected from prolonged exposure to light. **Do not freeze.**



Human peripheral blood lymphocytes stained with IP26 APC

Applications:

Applications: FC - Quality tested

Recommended Usage: Each lot of this antibody is quality control tested by immunofluorescent staining with flow cytometric analysis. **Test size products are transitioning from 20 μ l to 5 μ l per test.** Please check your vial or your CoA to find the suggested use of this reagent per million cells in 100 μ l staining volume or per 100 μ l of whole blood. It is recommended that the reagent be titrated for optimal performance for each application. Read more at www.biolegend.com/testsize regarding the test size change.

Application Notes: Additional reported applications (for the relevant formats) include: T cell activation. When co-staining with anti-CD3, we recommend using clone UCHT1, since we have confirmed that IP26 does not compete with this clone. Other anti-CD3 clones may compete out the binding of IP26.

Application References: 1. Schlossman S, *et al.* Eds. 1995. Leucocyte Typing V. Oxford University Press. New York. (FC)
2. Joseph A, *et al.* 2008. *J. Virol.* 82:3078. (FC) PubMed

Description: The IP26 antibody reacts with a monomorphic determinant of the α/β T-cell receptor, which is expressed on greater than 95% of normal peripheral blood CD3+ T cells. The α/β TCR recognizes a peptide bound to MHC leading to T-cell activation.

Antigen References: 1. Marchalonis J, *et al.* 2002. *J. Mol. Recognit.* 15:260.

Related Products:	Product	Clone	Application
	APC Mouse IgG1, κ Isotype Ctrl (FC)	MOPC-21	FC
	Cell Staining Buffer		FC, ICC, ICFC
	RBC Lysis Buffer (10X)		FC, ICFC
	Human TruStain FcX™ (Fc Receptor Blocking Solution)		FC, ICC, ICFC



For research use only. Not for diagnostic use. Not for resale. BioLegend will not be held responsible for patent infringement or other violations that may occur with the use of our products.



*These products may be covered by one or more Limited Use Label Licenses (see the BioLegend Catalog or our website, www.biolegend.com/ordering#license). BioLegend products may not be transferred to third parties, resold, modified for resale, or used to manufacture commercial products, reverse engineer functionally similar materials, or to provide a service to third parties without written approval of BioLegend. By use of these products you accept the terms and conditions of all applicable Limited Use Label Licenses. Unless otherwise indicated, these products are for research use only and are not intended for human or animal diagnostic, therapeutic or commercial use.