

## APC anti-human CD235ab

**Catalog # / Size:** 306607 / 25 µg  
306608 / 100 µg

**Clone:** HIR2

**Isotype:** Mouse IgG2b, κ

**Workshop Number:** VII 70299

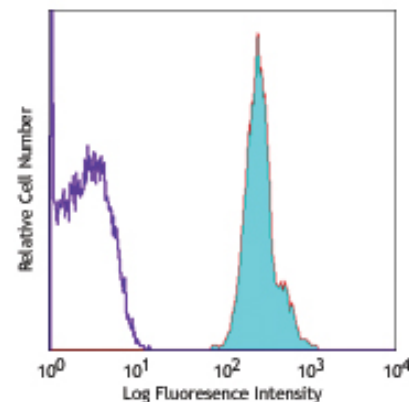
**Reactivity:** Human

**Preparation:** The antibody was purified by affinity chromatography, and conjugated with APC under optimal conditions. The solution is free of unconjugated APC and unconjugated antibody.

**Formulation:** Phosphate-buffered solution, pH 7.2, containing 0.09% sodium azide.

**Concentration:** 0.2 mg/ml

**Storage:** The antibody solution should be stored undiluted at 4°C and protected from prolonged exposure to light. **Do not freeze.**



Human red blood cells stained with HIR2 APC

## Applications:

**Applications:** FC - Quality tested

**Recommended Usage:** Each lot of this antibody is quality control tested by immunofluorescent staining with flow cytometric analysis. For immunofluorescent staining, the suggested use of this reagent is ≤ 0.015 µg per million cells in 100 µl volume or 100 µl of whole blood. It is recommended that the reagent be titrated for optimal performance for each application.

**Application References:** 1. Mason D, *et al.* Eds. 2002. Leucocyte Typing VII. Oxford University Press. New York.  
2. Quintana E, *et al.* 2012. *Sci Transl Med.* 159:149. PubMed.

**Description:** The HIR2 antibody reacts with a common epitope of glycoprotein A (CD235a) and glycoprotein B (CD235b). Glycoprotein A is the major sialoglycoprotein expressed on red blood cell membrane, and erythroid precursors. Glycoprotein A shares strong homology with glycoprotein B. The HIR2 antibody recognizes human RBCs and erythroid precursors and is useful in erythroid cell development studies. Mature, non-nucleated red blood cells are characteristically glycoprotein A positive, but CD45 and CD71 negative.

**Antigen References:** 1. Mason D, *et al.* Eds. 2002. Leucocyte Typing VII. Oxford University Press. New York.

### Related Products:

**Product**  
APC Mouse IgG2b, κ Isotype Ctrl  
Cell Staining Buffer  
RBC Lysis Buffer (10X)

**Clone**  
MPC-11

**Application**  
FC, ICFC  
FC, ICC, ICFC  
FC, ICFC  
FC, ICC, ICFC

Human TruStain FcX™ (Fc Receptor Blocking Solution)



For research use only. Not for diagnostic use. Not for resale. BioLegend will not be held responsible for patent infringement or other violations that may occur with the use of our products.



\*These products may be covered by one or more Limited Use Label Licenses (see the BioLegend Catalog or our website, [www.biolegend.com/ordering#license](http://www.biolegend.com/ordering#license)). BioLegend products may not be transferred to third parties, resold, modified for resale, or used to manufacture commercial products, reverse engineer functionally similar materials, or to provide a service to third parties without written approval of BioLegend. By use of these products you accept the terms and conditions of all applicable Limited Use Label Licenses. Unless otherwise indicated, these products are for research use only and are not intended for human or animal diagnostic, therapeutic or commercial use.